



# Tropical Storm Beryl Briefing

5:00 PM

Friday, Jul 5th, 2024

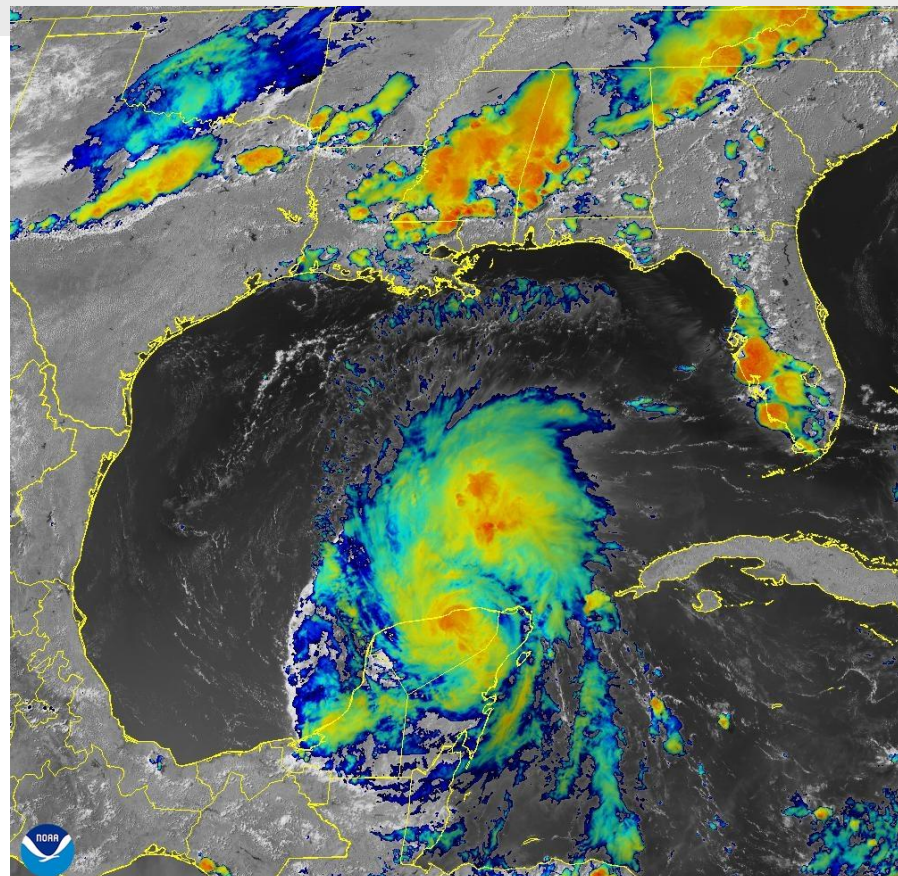
Dan Reilly, NWS Houston/Galveston



# Situation Overview

## Hurricane Beryl

- Track forecast for Beryl has continued to shift northward today.
- A Hurricane and Storm Surge Watch have been issued along the Texas coast up to Sargent, TX. Winds to hurricane force and storm surge values of 3 to 5 feet will be possible in the watch areas.
- Additional watches may be issued farther up the coast with later advisories.
- Rainfall amounts of 5 to 10 inches are expected with local amounts up to 15 inches where the heaviest rain falls...leading to a flash flood threat.
- Rip currents, elevated tides and seas are likely across all coastal areas even outside watch areas.



05 Jul 2024 20:11Z - NOAA/NESDIS/STAR - GOES-East - Sandwich Composite - GM



# Hurricane Beryl

## Hurricane Beryl



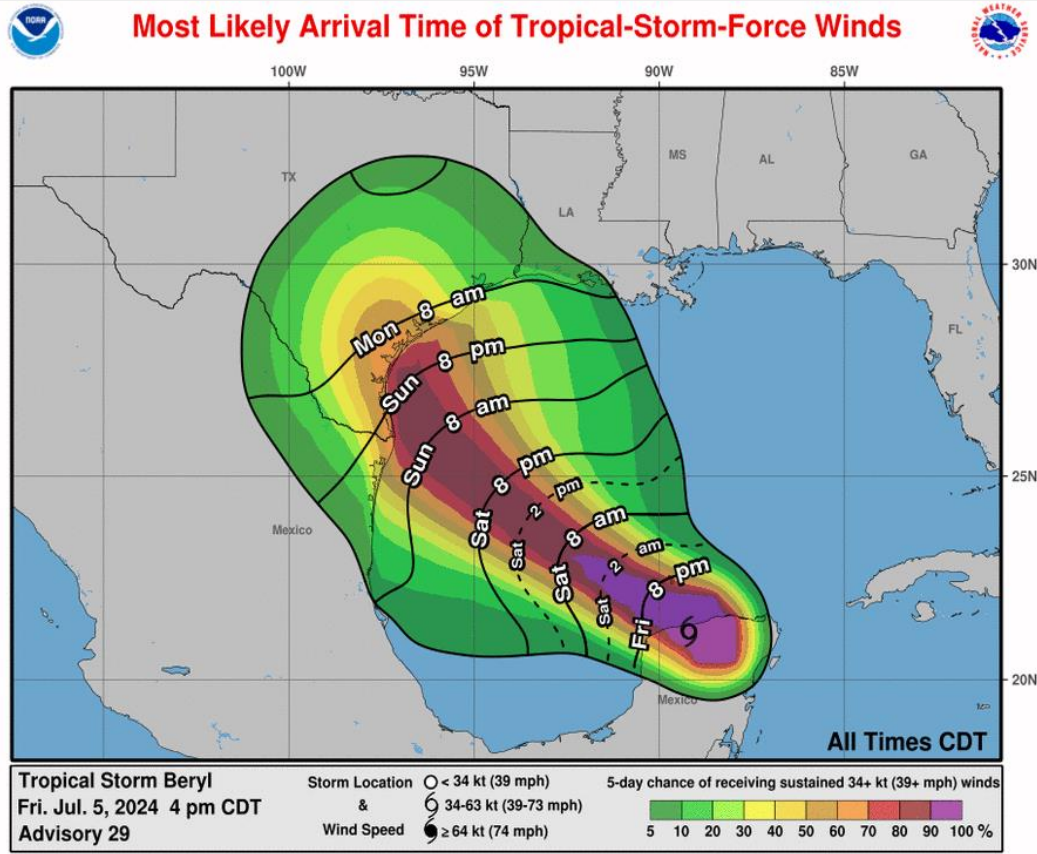
<b>Tropical Storm Beryl</b> Friday July 05, 2024 4 PM CDT Advisory 29 NWS National Hurricane Center	<b>Current information: x</b> Center location 21.2 N 89.2 W Maximum sustained wind 65 mph Movement WNW at 15 mph	<b>Forecast positions:</b> ● Tropical Cyclone ○ Post/Potential TC Sustained winds: D < 39 mph S 39-73 mph H 74-110 mph M > 110 mph	
<b>Potential track area:</b> Day 1-3 (solid line) Day 4-5 (dotted line)	<b>Watches:</b> Hurricane (pink) Trop Stm (yellow)	<b>Warnings:</b> Hurricane (red) Trop Stm (blue)	<b>Current wind field estimate:</b> Hurricane (brown) Trop Stm (yellow)

- NHC forecast brings Hurricane Beryl into South Texas early Monday, then tracks more north than northwest.
- A substantial shift has occurred in the track over the past 36 hours already and track could indeed shift again.
- Impacts, intensity will be highly dependent on track.
- Hurricane Watch area shown.
- Stay tuned for updates as watches could be expanded, TS Watches may be added in subsequent advisories.



# Most Likely Time of Arrival

## Hurricane Beryl



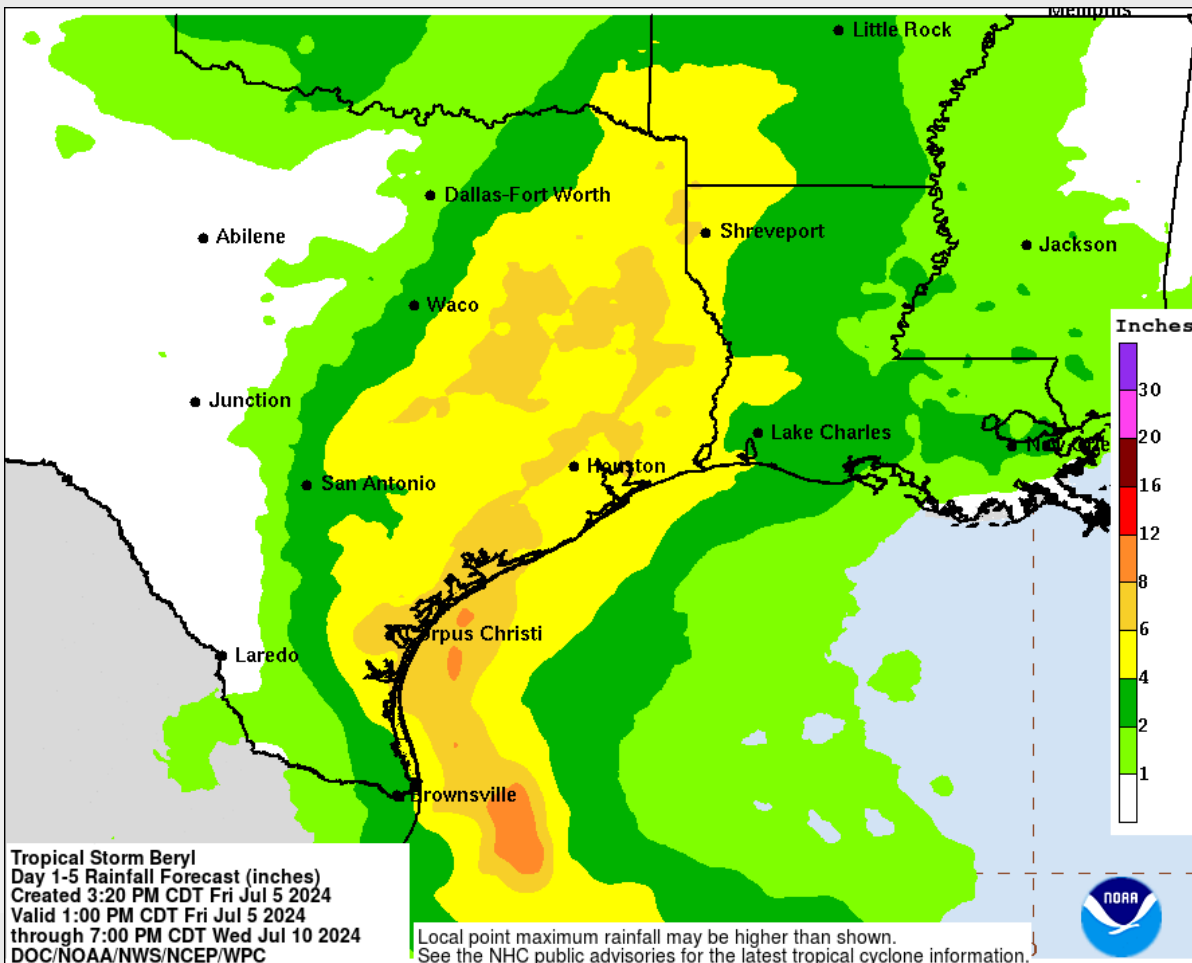
- The most likely time of arrival of Tropical Storm Force Winds Sunday night/early Monday morning.
- Note the higher point probabilities have shifted northward with forecast update, now include areas around Matagorda Bay.



# Rainfall Forecast

Rainfall amounts of 5 to 10 inches with localized amounts of 15 inches are expected.

The location of the heavier bands will be highly dependent on track (which is uncertain).

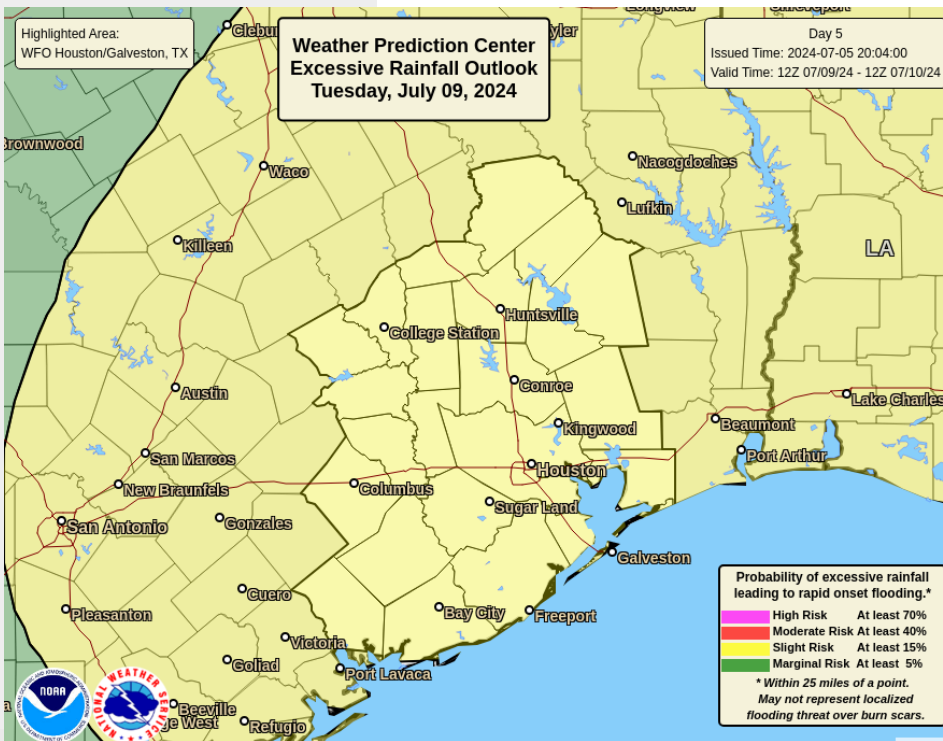
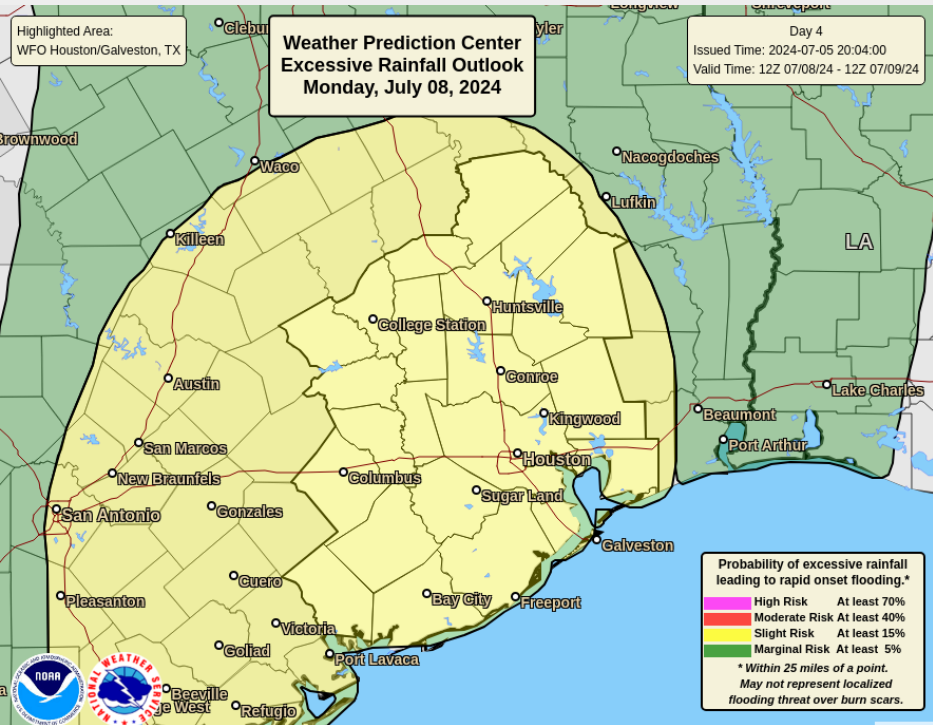






# Excessive Rainfall Outlook

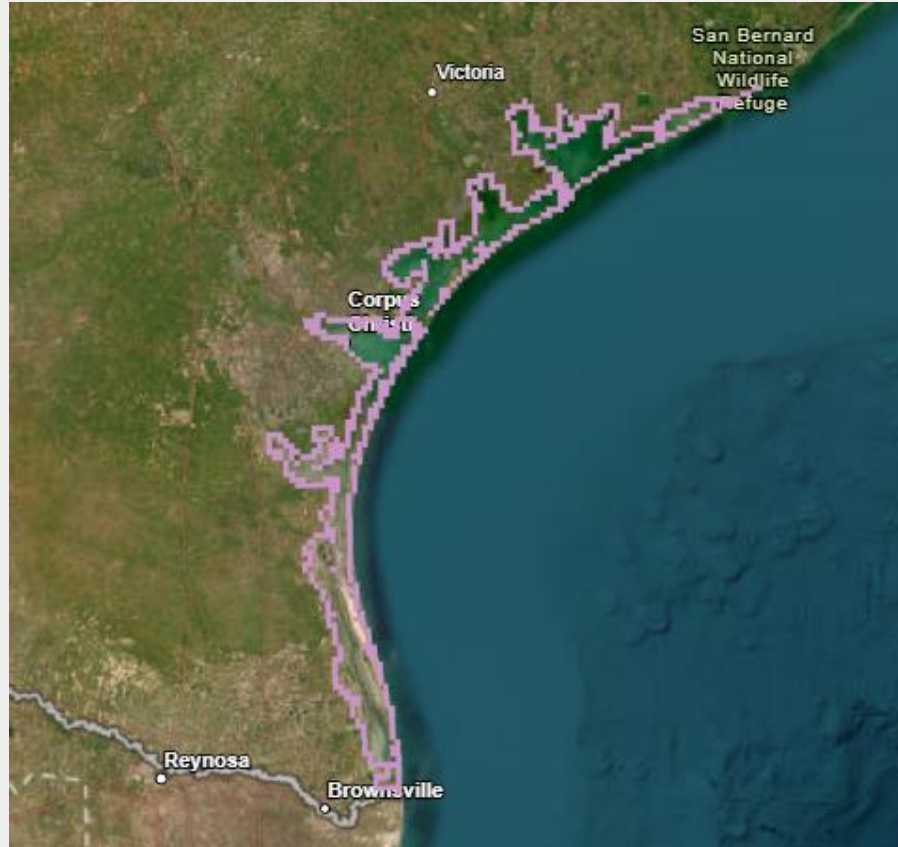
Main Heavy Rain/Flash Flood Threat Locally will be Monday Night and Tuesday for the local area. Risk currently rated as Slight but may be upgraded to Moderate wherever heaviest rain sets up.





# Storm Surge Watch / Warning

Beryl

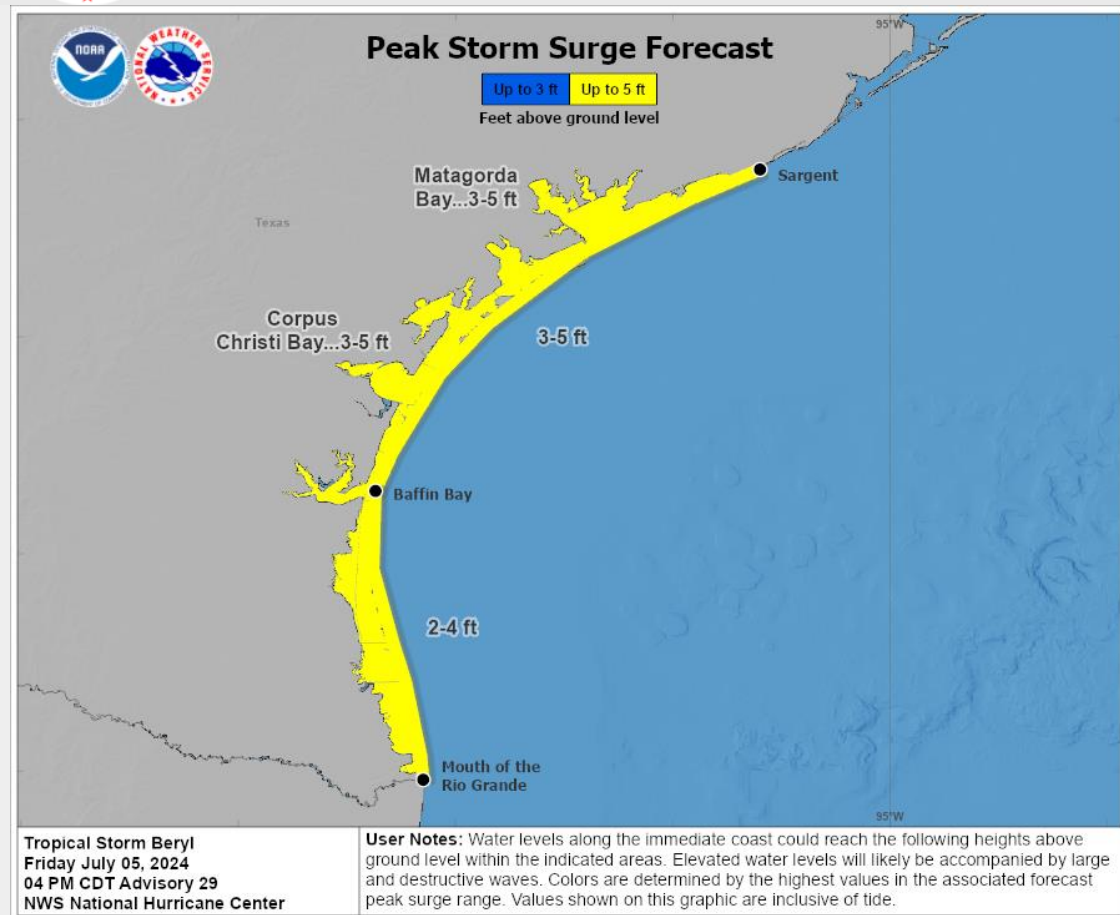


- Storm Surge Watch along Texas Coast up to Sargent, TX
- Three to five feet of water above normally dry ground is possible in watch area.



# Peak Surge (Height Above Normally Dry Ground)

Beryl



Peak surge 3 to 5 feet above ground level (above MHHW) in yellow shaded area.

Storm surge levels more uncertain farther up the coast.

Graphic will be updated to include those areas by tomorrow morning.

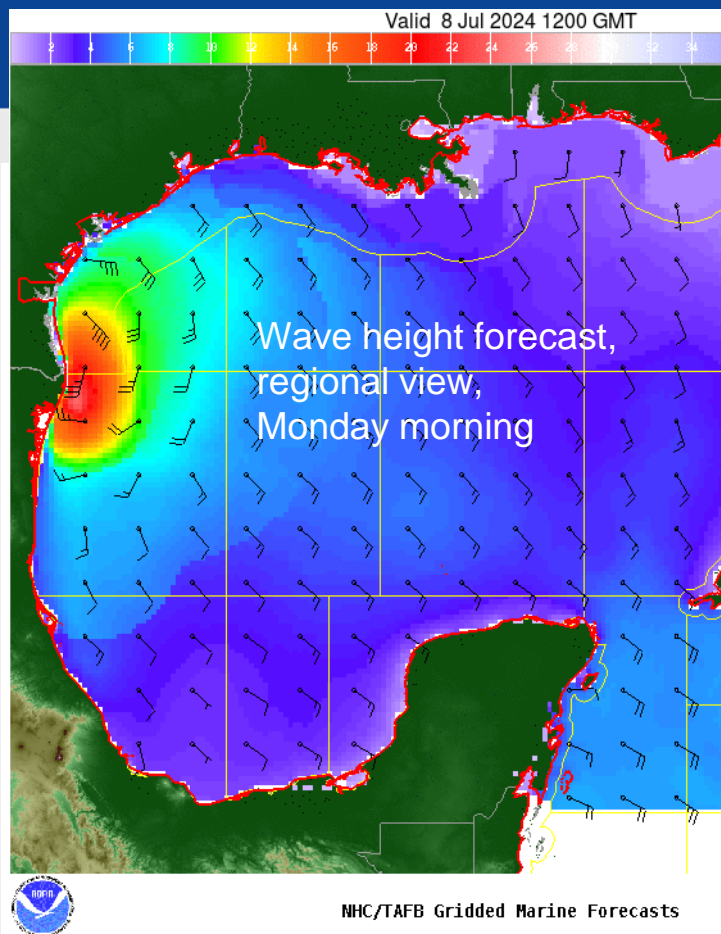
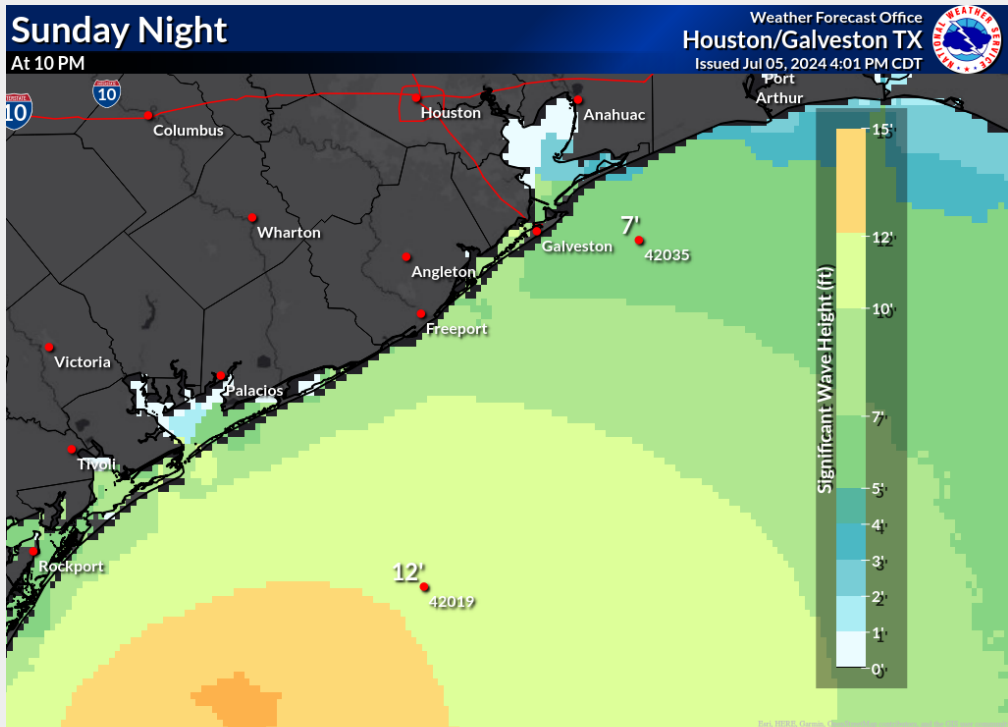




# Wave Heights

Hurricane Beryl

Wave heights forecasted to be 10 to 15 feet Sunday night into Monday morning but could be higher with a more northerly track, closer to the hurricane.

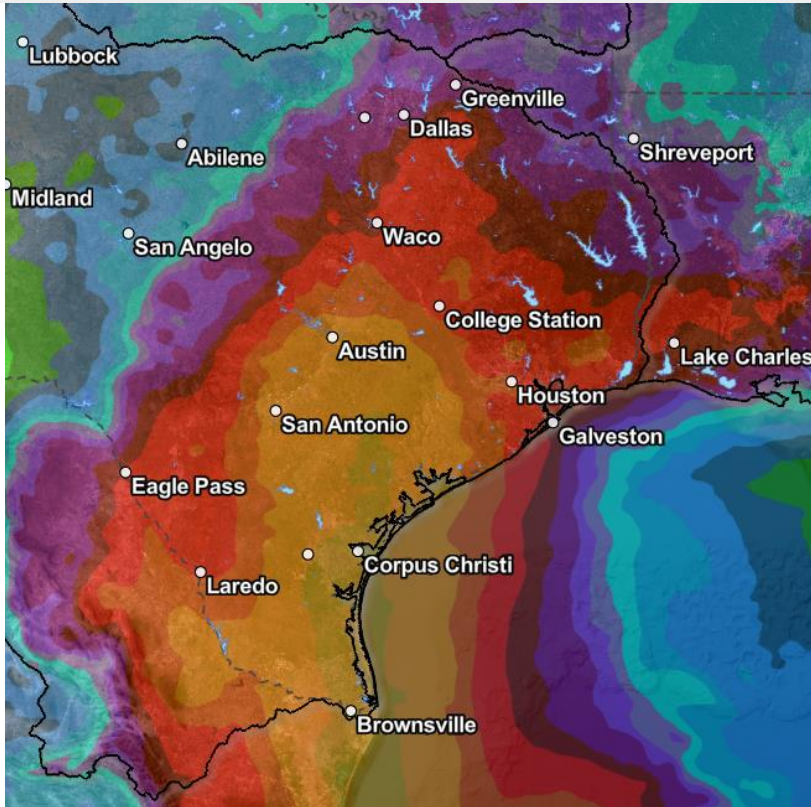
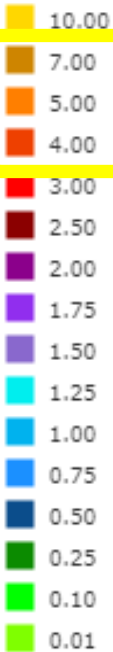




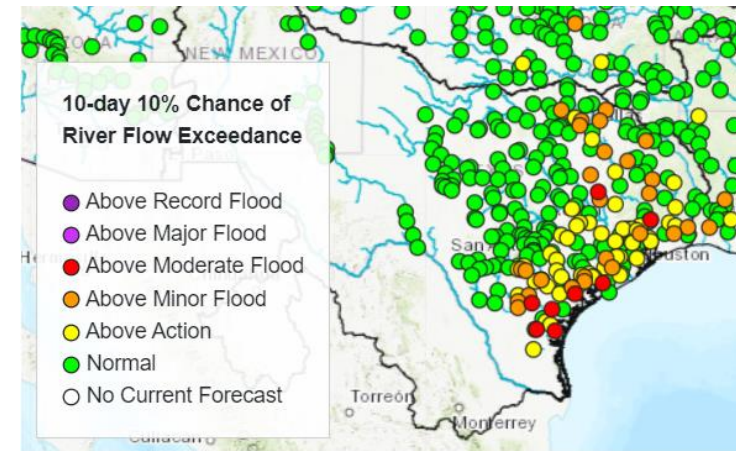
# 7 Day Forecast Rainfall (WGRFC)

Hurricane Beryl

7 Day  
QPF  
Inches



- Confidence continues to increase in the expected **IMPACTS**
- Area rivers and lakes in the area of expected heaviest rainfall will respond, watch for river flooding
- 10% Chance of Exceedance (10 days)



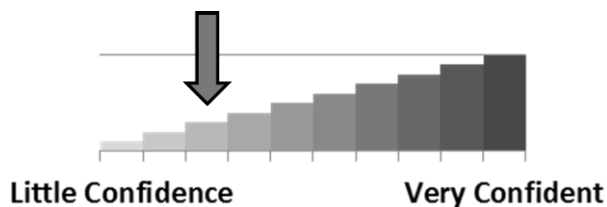


# Key Take-Aways

## Hurricane Beryl

- Track forecast for Beryl has continued to shift northward today.
- A Hurricane and Storm Surge Watch have been issued along the Texas coast up to Sargent, TX. Winds to hurricane force and storm surge values of 3 to 5 feet will be possible in the watch areas.
- Additional watches may be issued farther up the coast with later advisories.
- Rainfall amounts of 5 to 10 inches are expected with local amounts up to 15 inches where the heaviest rain falls...leading to a flash flood threat.
- Rip currents, elevated tides and seas are likely across all coastal areas even outside watch areas.

### Forecast Confidence



**Still relatively low confidence in track and intensity with Beryl but confidence is increasing. Will know more after it emerges from the Yucatan and tracks back out over the Gulf.**



# Local Resources

## Hurricane Beryl

Next Briefing:  
5:00 PM CDT  
Method: Webinar



**Web:** [weather.gov/houston](http://weather.gov/houston)



**Phone:** 281-337-5074



**E-mail:** [sr-hgx.nws@noaa.gov](mailto:sr-hgx.nws@noaa.gov)



**Facebook:** [facebook.com/NWSHouston/](https://facebook.com/NWSHouston/)



**Twitter:** [twitter.com/NWSHouston](https://twitter.com/NWSHouston)



**YouTube:** [youtube.com/nwshouston](https://youtube.com/nwshouston)