

# GALVESTON COUNTY OFFICE OF EMERGENCY MANAGEMENT DISASTER GUIDE



*Hurricane Ike 2008*

## Preparedness Saves Lives

MAKE A PLAN  
BUILD A KIT  
STAY INFORMED



Twitter:  
[@galvcountyoem](https://twitter.com/galvcountyoem)



Facebook:  
[@galvestoncountytexas](https://facebook.com/galvestoncountytexas)



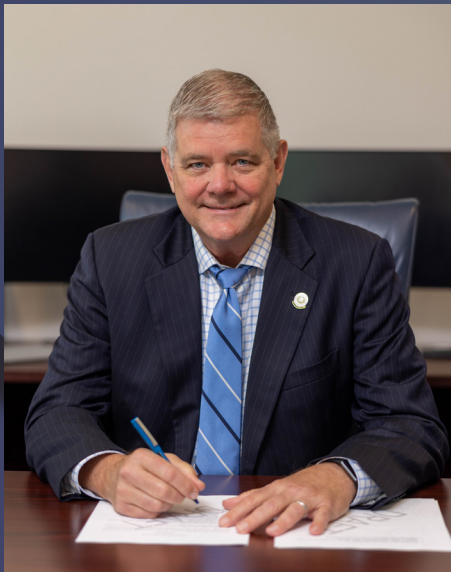
Instagram:  
[@galvestoncountytexas](https://instagram.com/galvestoncountytexas)



YouTube:  
[@galvestoncountytexas](https://youtube.com/galvestoncountytexas)

[GCOEM.ORG](https://GCOEM.ORG)





**COUNTY JUDGE MARK HENRY**  
Director of Emergency Management

*At the Galveston County Office of Emergency Management, our commitment is unwavering. We work tirelessly preparing for and responding to all types of disasters. While hurricanes pose a significant threat to our Texas Gulf Coast, we remain ready for all potential hazards. Visit [www.gcoem.org](http://www.gcoem.org) for essential resources to help you craft an effective preparedness plan, assemble a disaster kit, and stay informed with official alerts. Preparedness saves lives.*

*— County Judge Mark Henry*



*Scan this QR code for the Galveston County Office of Emergency Management.*



# HURRICANE SEASON

JUNE 1<sup>ST</sup> - NOVEMBER 30<sup>TH</sup>

## HURRICANE THREATS



**Storm Surge**



**Wind**



**Inland Flooding**



**Tornadoes**



# Make a Plan

*Prepare For All Hazards*



Scan here  
for more  
information:  
**Make a Plan**



## COMMUNICATION

- Choose someone out of area to coordinate info
- Sign up for mass notifications
- Write down essential land line numbers
- Buy an AM/FM radio with alternate power sources
- When cell towers are overwhelmed, try texting
- Choose rendezvous location in advance



## PLAN FOR ALL-HAZARDS

*Does your plan prepare you for these types of emergencies?*

- Hazardous Materials Release
- Flashflooding & Flooding
- Power Outages
- Tropical Weather
- Severe Storms
- Winter Weather





## BASICS

- Water (a gallon per day, per person)
- Food (3 day supply non-perishable)
- Baby food/formula
- Flashlight with batteries
- Road maps
- Cash and bank cards
- Weather appropriate clothes, sturdy shoes
- Tent, pillows, blankets, sleeping bags



## FIRST AID/MEDICAL

- Prescription medication
- Allergy and pain medication
- Bandages and gauze
- Antibiotic cream
- Medical gloves
- Tourniquet
- Sunscreen
- Bug spray



## HYGIENE

- Trash bags
- Toilet paper
- Dental care products
- Diapers and wipes
- Towels
- Masks, hand sanitizer, wipes



## COMMUNICATION

- Cell phone
- Contact list
- Whistle
- Writing supplies
- Charger/battery



## TOOLS/MISC.

- Pet food
- Pocket knife
- Saw or hatchet
- Manual can opener
- Matches
- Tarp
- Duct tape



## DOCUMENTS

- Insurance policy
- IDs, birth record, SS card
- Deeds, leases, and titles
- Home inventory
- Family photos
- Digital backups
- Photos of property
- Vet records



Scan here for  
more information:  
**Build a Kit**



# Build a Kit

## Personalize Your Supplies

# Stay Informed

Connect With Official Sources

Galveston County is the only Emergency Management Office in the United States located with the National Weather Service. For accurate information, connect with Galveston County Emergency Management.



Twitter:  
@galvcountyoem



Facebook:  
@galvestoncountytx



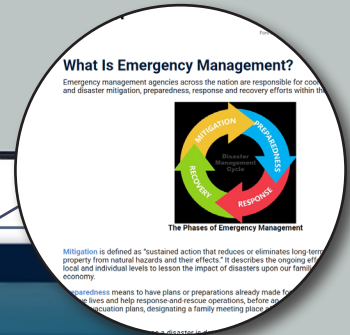
Instagram:  
@galvestoncountytx



YouTube:  
@galvestoncountytx



Scan here for more information:  
**Stay Informed**







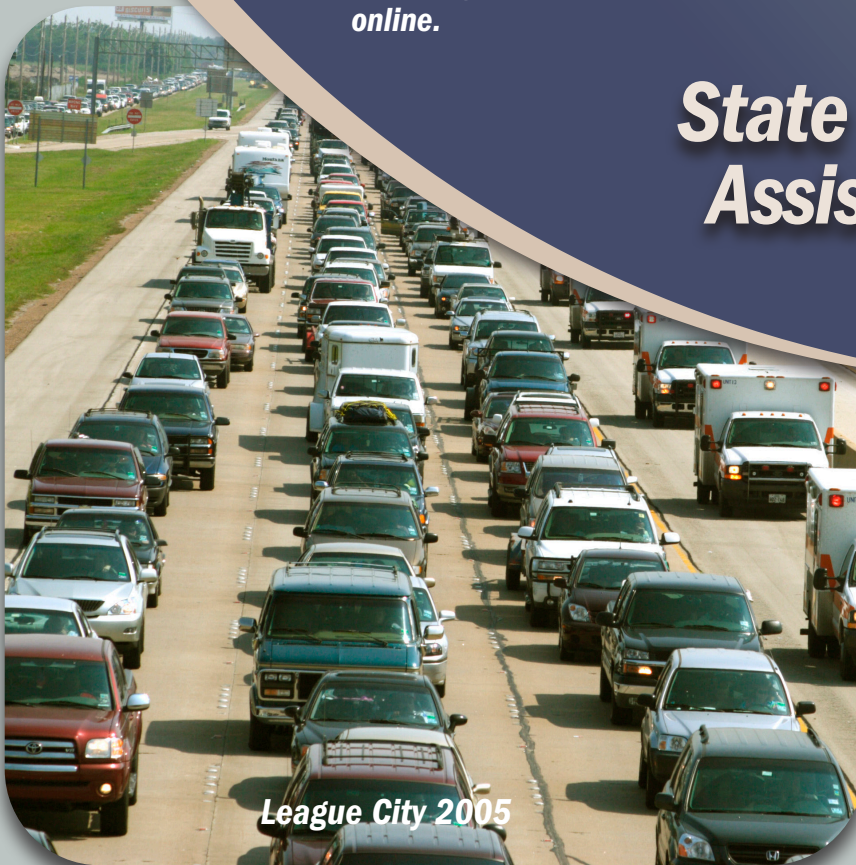
Scan here to register online.

# Annual Registration

## STEAR

### State of Texas Emergency Assistance Registration

Call 2-1-1



League City 2005

**Register annually if you or a family member may need assistance during an emergency or evacuation due to:**

- No Transportation
- Special Needs
- Medical Issues
- Disabilities
- Functional Needs



Hurricane Ike 2008



MAKE A PLAN, BUILD A KIT, STAY INFORMED



# Prepare Your Property

*Update and Check On Insurance*



*Tiki Island 2021*



*Hitchcock 2020*



*Bolivar 2008*

***Review your insurance policies annually to ensure that your property and vehicles are covered for all hazards.***

In Galveston County, carrying flood, windstorm, and homeowner's insurance is a good investment to ensure you have the coverage and resources you need to recover when disaster strikes.



*National Flood Insurance Program*



*Texas Windstorm Insurance*



*Texas Department of Insurance*



# Prepare for Home Protection

## Start Your Recovery Before Disaster Strikes

The best time to prepare for emergencies is now. Following the steps below can help mitigate damage and enable you to evacuate quickly if needed. Always remember to turn off utilities before you leave. Preparedness can protect your home and save lives.



### MAINTAIN PREPAREDNESS

*Regular maintenance can help protect your property during disasters.*

- Trim trees and remove dead limbs
- Keep gutters clean and drainage flowing
- Repair any loose roof shingles
- Maintain fences and secure gates
- Plant landscaping with deep roots



### PREPAREDNESS TASKS

*Take precautions to protect your home.*

- Collect items to cover windows and doors
- Learn location of utility shut offs
- Prepare storage for outdoor items



### PROTECTIVE MEASURES

*Secure home before evacuating.*

- Cover windows and doors
- Secure outdoor items
- Turn off utilities



*Kemah 2005*

# Evacuation Information

## What You Need To Know



Scan here for  
Galveston County  
Emergency Alerts.

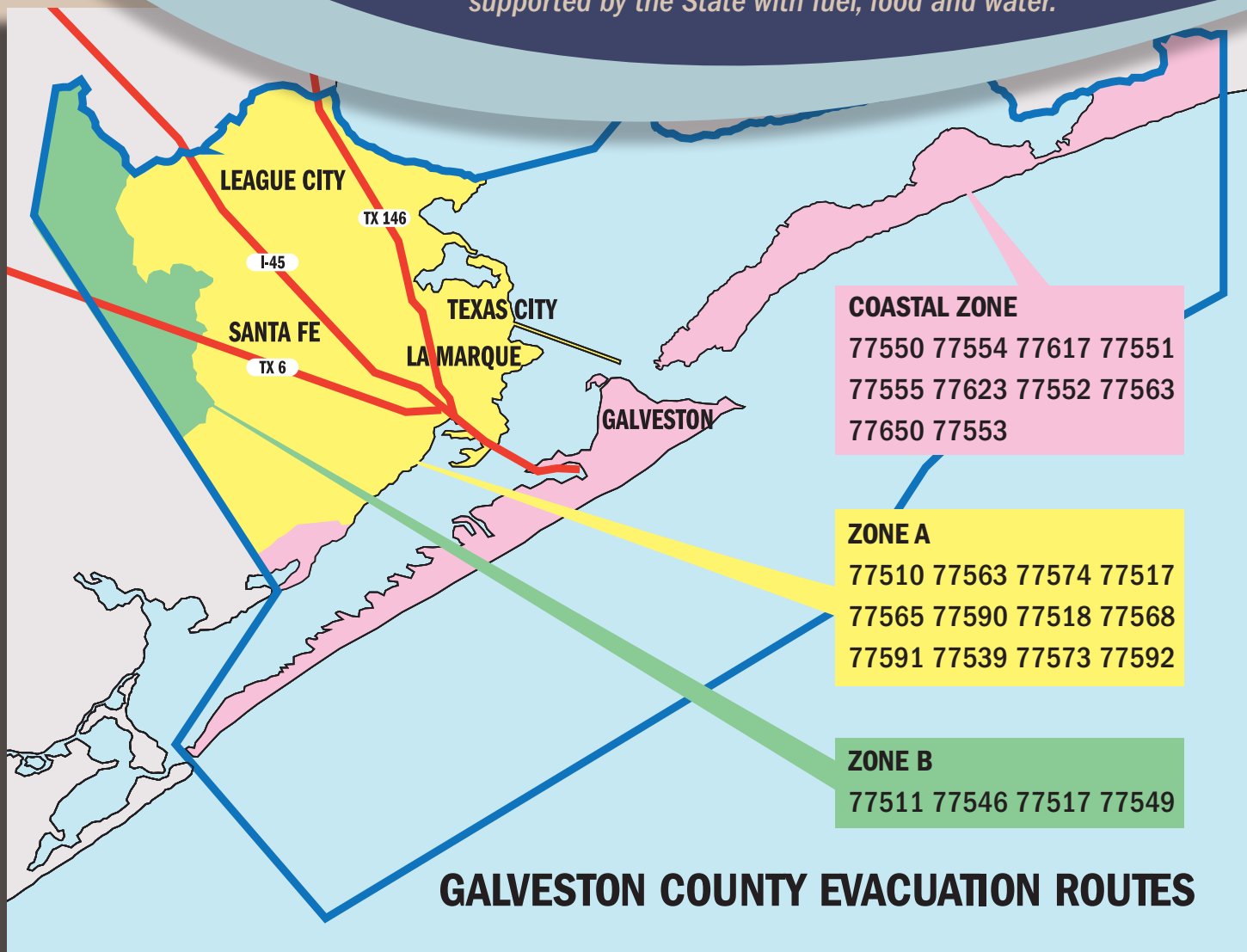
### MANDATORY EVACUATIONS

are issued when forecasted conditions indicate that it is not safe for you to remain in the area. It is also an indication that emergency services may not be available until conditions improve.

### VOLUNTARY EVACUATIONS

are issued when forecasted conditions indicate that it is not safe for you to remain in the area

*Evacuation zones are sorted by zipcode and routes should be supported by the State with fuel, food and water.*





# Sheltering in Disasters

## *What To Expect*

### PREPARE YOUR FAMILY TO BE SELF-SUFFICIENT.

Consider the needs of each family member, including pets. Bring any medication, mobility and medical devices that each individual requires.

### ***Evacuation Packing List***

- Medication in your prescription bottles
- Mobility and medical devices
- Hearing aids/batteries and eyewear
- Hygiene items
- Diapers and formula
- Pet supplies and crate
- Food and water for a week
- Mobile devices and chargers
- Blankets and pillows
- Important documents
- Digital inventory of personal property
- Extra clothing
- Cash





# Returning Home After The Disaster

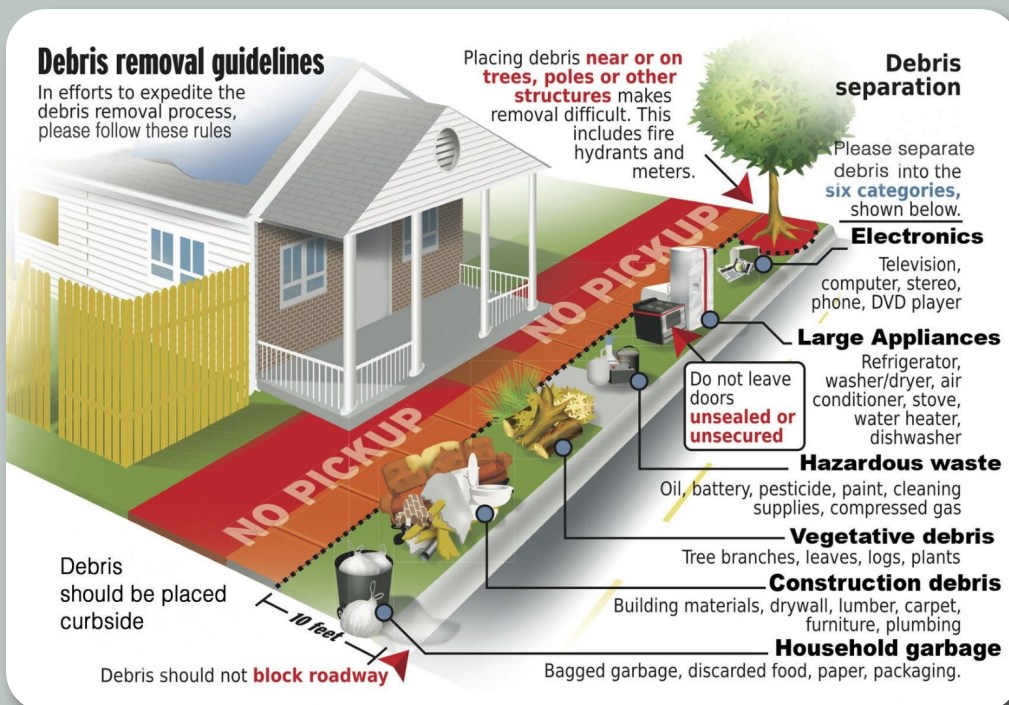
RESIDENTS RETURNING AFTER A DISASTER MAY FIND FUEL, FOOD, WATER AND UTILITIES UNAVAILABLE. PLAN TO BE SELF-SUFFICIENT.



For details on how to muck and gut visit this link.



When it is safe to return, Galveston County officials will notify you of reentry plans. Bring in supplies from outside the affected area, as they may not be available after reentry. Document all damages to your property and contact your insurance company immediately. Report property damage at GCOEM.org.



## Mucking & Gutting Cleaning Up After Floods

*If your home is flooded, you may need to remove mud and silt with a flat shovel to prevent falls. Wet drywall must be removed quickly to slow the growth of mold. If the home received less than 4' of flooding, remove the lower 4' of drywall.*





Is your business prepared for emergencies? Find answers by scanning this link.

# Recovery Resources

## Weathering The Storm

### DISASTER RECOVERY CHECKLIST

#### STEP 1:

Document Property Damage

#### STEP 2:

Report to Insurance

#### STEP 3:

Register with FEMA if Declared Disaster

#### STEP 4:

Apply for SBA Loan for damages not covered by Insurance or FEMA

#### STEP 5:

Contact Galveston County Long Term Recovery Group for additional resources  
[Galvestoncountyrecovery.org](http://Galvestoncountyrecovery.org)



Galveston 2008

### Have you invested in adequate insurance?

- Fire, Theft, & Vandalism
- Windstorm & Hail
- Business Interruption
- Flooding
- Debris Removal



Bacliff 2008

### Develop business resiliency plans for:

- Disaster Recovery
- Business Continuity
- Employee Protection
- Property Preservation
- All-Hazards Insurance

## Turn Around Don't Drown



- 18-24 inches of water can carry away a truck.



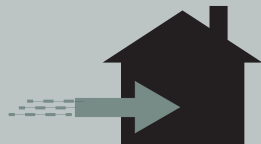
- 12 inches of water can carry away a small car.



- 6 inches of water can carry away an adult.



## Staying Safe in Tornadoes



Go inside quickly



Get on lowest level



Choose a windowless room



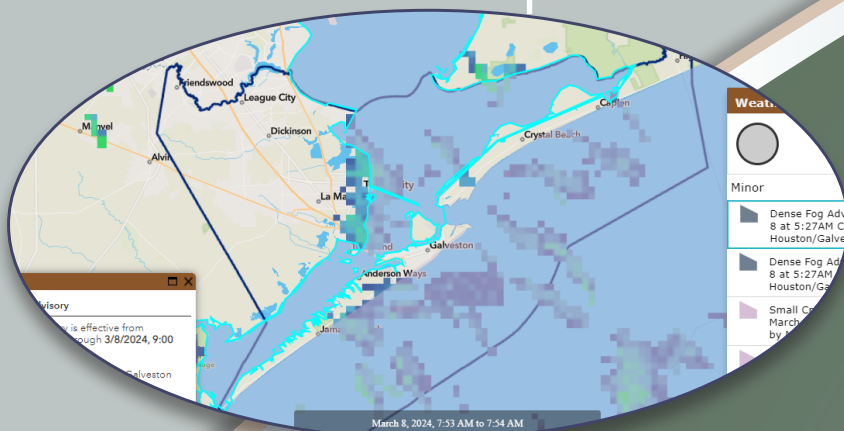
Stay until storm passes

## Driving in Bad Weather

- Maintain a safety zone away from other vehicles
- Lower speed & signal early
- Do not drive into standing water



Scan above for current weather conditions, watches, and warnings.



Interactive weather map available at [GCOEM.org](http://GCOEM.org)

# Severe Weather Threats



# Winter Weather

## Prepare For Cold Temperatures



Scan this code for cold weather safety tips.



### Protect Pipes

Insulate pipes before a freeze. If home is vacant, turn off water & drain pipes.



### Protect People & Pets

Check on vulnerable family members & bring pets inside when it's cold.



### Protect Plants

Keep trees trimmed away from power lines & bring in or cover tropical plants.



### Winter Road Safety

When traveling in winter weather, choose a route that avoids bridges and overpasses. Double your distance between other vehicles and don't use cruise control.

### What is Wind Chill?

Wind chill describes how cold temperatures feel on skin.





# Hazardous Materials

*Items used everyday, such as natural gas, household chemicals and propane must be properly used, stored, and protected, to keep our homes and communities safe.*



## PROPANE SAFETY

- Store in cool location
- Close valves
- Install Carbon Monoxide Detectors
- Use in well ventilated area, 20ft from buildings.

## BEFORE YOU DIG

- Required by Texas Law
- Call 8-1-1 before digging more than 16"

## CHEMICALS

- Store away from sunlight, pets, & children
- Check for leaks & obey warnings





# Chemical Emergencies

*Prepare your family for hazards of all kinds to ensure you have the information and resources you need to make decisions in disasters and emergencies.*



Scan code to sign up for emergency alerts in your area.



## PREPARE

The Galveston County Local Emergency Planning Committee coordinates with local industry and emergency management partners to ensure that the community is prepared for chemical emergencies.

- Check with Local Emergency Planning Committee (LEPC)
- Enable LEPC & GCOEM Notifications



## LISTEN

In the event of a chemical emergency, heed emergency alerts from official news sources and follow directions for any protective actions that may be needed.

- Listen for Emergency Alerts
- Follow directions and actions as needed



## RESPOND

- If Shelter-In-Place ordered:
  - i. Go Inside Immediately
  - ii. Turn off Ventilation, AC, or Heater
  - iii. Close all Windows or Doors
  - iv. Wait until "All Clear" is given



Santa Fe 2010



Deer Park 2019



## Volunteer Organizations



**CERT:**  
Community Emergency Response Team



Galveston County CERT-Jamaica Beach



**TEXSAR:**  
Texas Search & Rescue



TEXSAR-Dickinson



**MRC:**  
Medical Reserve Corps



Medical Reserve Corps-Texas City

# Community Involvement



League City 2024

## Educational Programs

For more info go to: [GCOEM.org](http://GCOEM.org)

- Preparedness Training
- Citizen Response to Active Shooter
- Stop the Bleed
- Internet Safety
- School Safety Support

## Community Outreach

For more info go to: [GCOEM.org](http://GCOEM.org)

- Hurricane Townhalls
- Civic Groups
- Faith Based Organizations
- Business Partners
- Service Agencies



Galveston 2023



# Contact Information

## **Bayou Vista**

409-935-8348 Main  
409-935-0449 Non-Emergency

## **Clear Lake Shores**

281-334-2799 Main  
281-334-1034 Non-Emergency

## **Dickinson**

281-337-2489 Main  
281-227-4700 Non-Emergency

## **Friendswood**

281-996-3200 Main  
281-996-3300 Non-Emergency

## **Galveston**

409-797-3500 Main  
409-765-3702 Non-Emergency

## **Hitchcock**

409-986-5591 Main  
409-986-5559 Non-Emergency

## **Jamaica Beach**

409-737-1142 Main  
409-737-1800 Non-Emergency

## **Kemah**

281-334-1611 Main  
281-334-5414 Non-Emergency

## **La Marque**

409-938-9200 Main  
409-938-9269 Non-Emergency

## **League City**

281-554-1000 Main  
281-332-2566 Non-Emergency

## **Santa Fe**

409-925-6412 Main  
409-925-2000 Non-Emergency

## **Texas City**

409-948-3111 Main  
409-643-5720 Non-Emergency

## **Tiki Island**

409-935-1427 Main  
409-935-6579 Non-Emergency

## **Call 9-1-1 For Life Threatening Emergencies**

### **Galveston County Emergency Management**

281-309-5002 Main  
888-384-2000 After Hours

### **Galveston County Sheriff's Office**

409-766-2300 Main

### **Galveston County Health District**

409-938-7221 Main  
409-948-2485 Animal Services  
409-763-7202 Birth and Death Records  
409-938-2456 Community Health  
409-938-2234 Coastal Health & Wellness  
409-938-2411 Environmental Services

### **Gulf Coast Center - Mental Health**

409-944-4520 Main  
866-729-3848 Crisis Hotline

### **Galveston County Parks & Senior Services**

409-934-8101 Main

### **Galveston County Mosquito Control**

800-842-5622 Main

### **Galveston County Nuisance Abatement**

409-766-4509 Main

### **Galveston County - Bolivar Beach Stickers**

409-934-8103 Main

### **Galveston County Veterans Services**

409-766-2448 Main

### **Galveston County Constable Precinct 1**

281-316-8810 Main

### **Galveston County Constable Precinct 2**

409-770-5477 Main

### **Galveston County Constable Precinct 3**

409-770-5172 Main

### **Galveston County Constable Precinct 4**

281-316-8711 Main

### **Galveston County Clerk**

409-766-2200 Galveston Office  
281-316-8732 League City Office

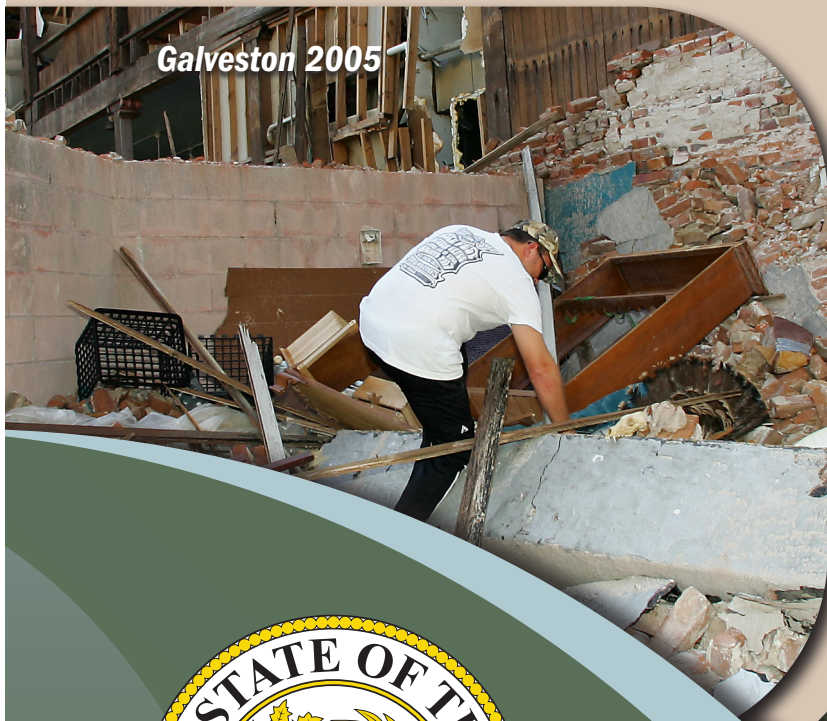




*Kemah 2008*



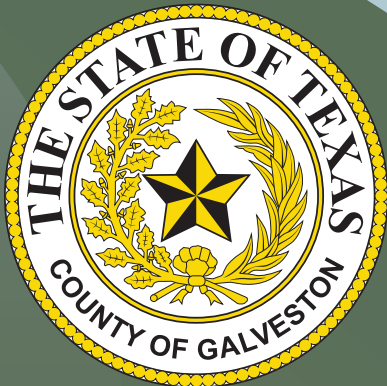
*Bayou Vista 1984*



*Galveston 2005*



*Bolivar 2008*



**GCOEM.ORG**



*Clear Lake Shores 2021*



Twitter:  
[@galvcountryoem](https://twitter.com/galvcountryoem)



Facebook:  
[@galvestoncountytexas](https://facebook.com/galvestoncountytexas)



Instagram:  
[@galvestoncountytexas](https://instagram.com/galvestoncountytexas)



YouTube:  
[@galvestoncountytexas](https://youtube.com/galvestoncountytexas)