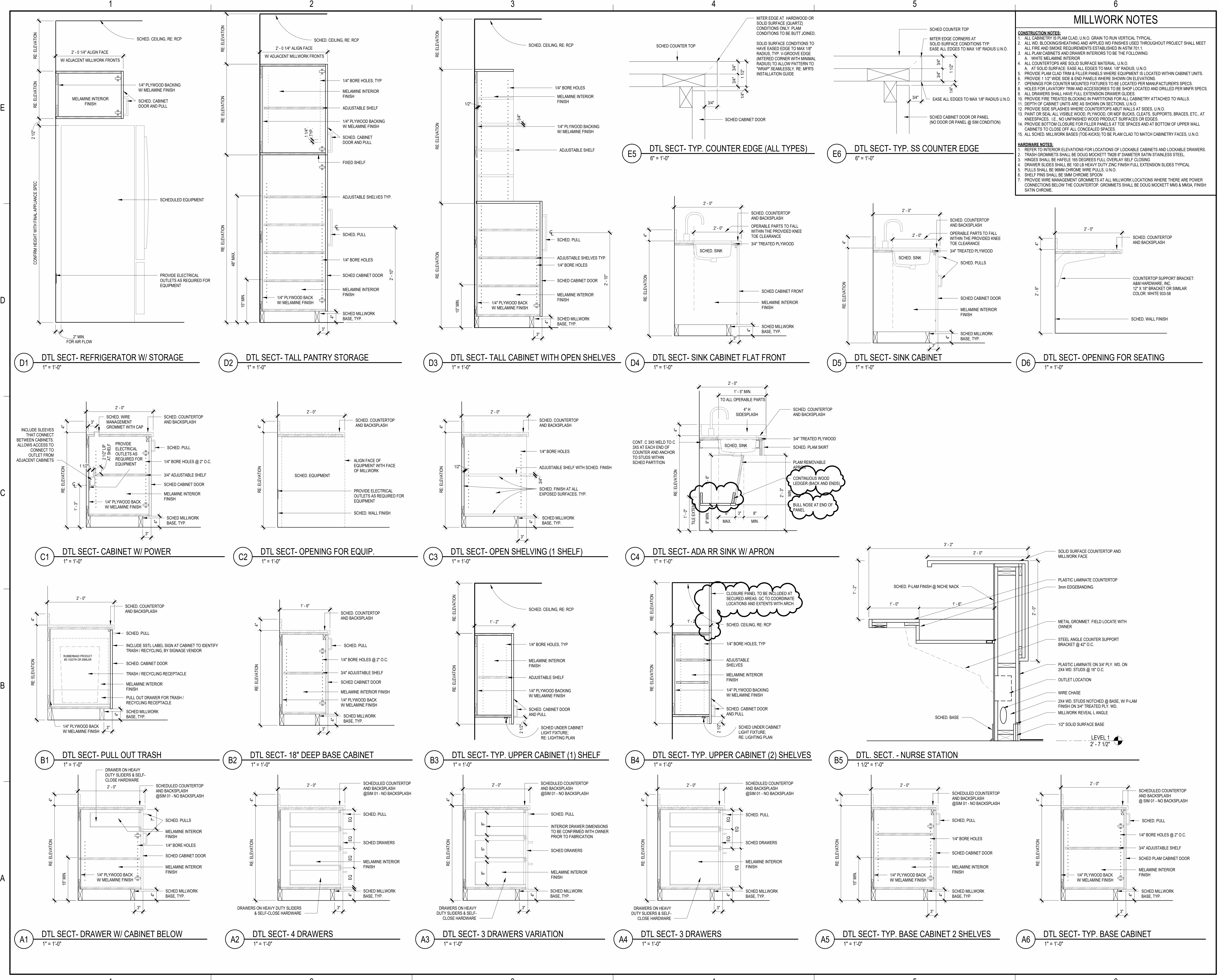


Autodesk Docs://Mental Health Extended Observation UnitR316950.01 Mental Health Extended Observation Unit.rvt
11/25/2024 5:24:01 PM



MILLWORK NOTES

CONSTRUCTION NOTES:

- ALL CABINETRY IS PLAM CLAD, U.N.O. GRAIN TO RUN VERTICAL TYPICAL.
- ALL NO. BLOOMING HEATHINGS AND APPLIED WOOD FINISHES USED THROUGHOUT PROJECT SHALL MEET ALL FIRE AND SMOKE REQUIREMENTS ESTABLISHED IN ASTM 701.1.
- ALL PLAM CABINETS AND DRAWER INTERIORS TO BE THE FOLLOWING:
 - WHITE MELAMINE INTERIOR
 - ALL COUNTERTOPS ARE SOLID SURFACE MATERIAL, U.N.O.
 - AT SOLID SURFACE, EASE ALL EDGES TO MAX 1/8" RADIUS, U.N.O.
 - DEPTH OF CABINET UNITS ARE AS SHOWN ON SECTIONS, U.N.O.
 - PROVIDE 1/2" WIDE SIDE & END PANELS WHERE SHOWN ON ELEVATIONS.
 - OPENINGS FOR COUNTERTOP MOUNTED FIXTURES TO BE LOCATED PER MANUFACTURER'S SPECS.
 - HOLES FOR LAVATORY TRIM AND ACCESSORIES TO BE SHIP LOCATED AND DRILLED PER INFR SPECS.
 - ALL DRAWERS SHALL HAVE FULL EXTENSION DRAWER GUIDES.
 - PROVIDE FIRE TREATED BLOCKING IN PARTITIONS FOR ALL CABINETRY ATTACHED TO WALLS.
 - HOLES FOR CABINET UNITS ARE AS SHOWN ON SECTIONS, U.N.O.
 - PROVIDE SIDE SPLASHES WHERE COUNTERTOPS ABUT WALLS AT SIDES, U.N.O.
 - PAINT OR SEAL ALL VISIBLE WOOD, PLYWOOD, OR MDF BUICKS, CLEATS, SUPPORTS, BRACES, ETC., AT KNEESPLASHES, I.E. NO UNFINISHED WOOD PRODUCT SURFACES OR EDGES.
 - PROVIDE BOTTOM CLOSURE FOR FILLER PANELS AT TOE SPACES AND AT BOTTOM OF UPPER WALL CABINETS TO CLOSE OFF ALL CONCEALED SPACES.
 - ALL SCHED. MILLWORK BASES (TOE-KICKS) TO BE PLAM CLAD TO MATCH CABINETRY FACES, U.N.O.

HARDWARE NOTES:

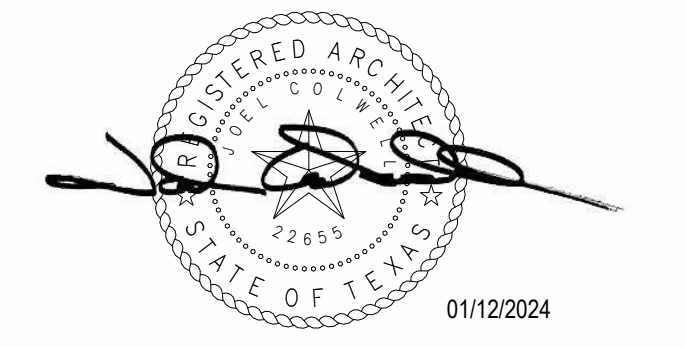
- REFER TO INTERIOR ELEVATIONS FOR LOCATIONS OF LOCKABLE CABINETS AND LOCKABLE DRAWERS.
- TRASH GROMMETS SHALL BE DOUG MOCKETT TMB 8" DIAMETER SATIN STAINLESS STEEL.
- HINGES SHALL BE HAFLE 165 DEGREES FULL, OVERLAY SELF CLOSING.
- DRAWER SLIDES SHALL BE 100 LB HEAVY DUTY ZINC FINISH FULL EXTENSION SLIDES TYPICAL.
- PULLS SHALL BE 96MM CHROME WIRE PULLS, U.N.O.
- SHELF PINS SHALL BE 5MM CHROME SPOON.
- PROVIDE WIRE MANAGEMENT GROMMETS AT ALL MILLWORK LOCATIONS WHERE THERE ARE POWER CONNECTIONS BELOW THE COUNTERTOP. GROMMETS SHALL BE DOUG MOCKETT MMS & MMSA, FINISH SATIN CHROME.

ARCHITECT / ENGINEER
HUITT ZOLLARS
 1001 FANNIN ST, SUITE 4040
 HOUSTON, TX 77002
 713-622-1180
 WWW.HUITT-ZOLLARS.COM

ADVANCED DESIGN™

CONSULTANTS:

- BEHAVIORAL HEALTH**
 HUMAN EXPERIENCE
 401 Hawthorne Lane, Suite 110-124
 Charlotte, NC 28204
 CONTACT: Kevin Turner
 980.288.8847
- MEP & LOW VOLTAGE**
 E&C ENGINEERS & CONSULTANTS INC.
 1010 Lamar St., Suite 650
 Houston, TX 77002
 CONTACT: Lance McKnight
 713.580.8800
- STRUCTURAL / CIVIL**
 DALLY + ASSOCIATES, INC.
 9300 Richmond Avenue, Suite 460,
 Houston, TX 77042
 CONTACT: Fred Dally
 713.337.8881
- TECHNOLOGY**
 ATLAS CONSULTING, INC.
 2939 Commerce Street Suite 118,
 Houston, TX, 77002
 CONTACT: William Scabora
 512.468.8300



OWNER:

GALVESTON COUNTY
 722 MOODY AVE., GALVESTON TX 77550

PROJECT:
MENTAL HEALTH EXTENDED OBSERVATION UNIT
 PROJECT ADDRESS:
 1207 S Oak Street
 La Marque, TX 77568

ISSUES / REVISIONS LOG:

MARK	DATE	DESCRIPTION
2	11/22/2023	50% CONSTRUCTION DOCUMENTS
3	01/12/2024	100% CONSTRUCTION DOCUMENTS
4	01/31/2024	ADDENDUM 1

PROJECT NO.: R316950.01
 DRAWN BY: Author
 REVIEWED BY: Checker
 APPROVED BY: Approver

MILLWORK SECTIONS & DETAILS

SHEET NUMBER:
A-540
 COPYRIGHT © 2023 HUITT-ZOLLARS, INC.

1

2

3

4

5

6

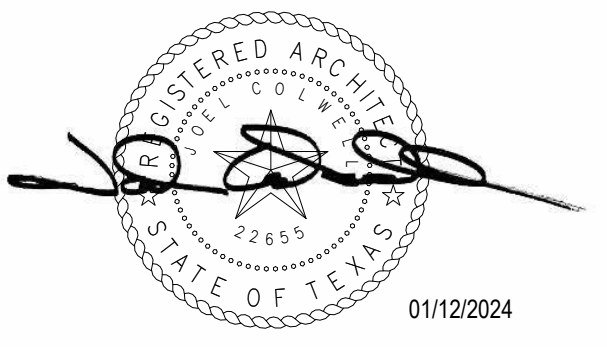
GLAZING SCHEDULE

TYPE	GLASS	LOCATION	VISIBLE LIGHT TRANSMITTANCE (VLT)			VISIBLE LIGHT REFLECTANCE			U-VALUE		
			EXTERIOR %	INTERIOR %	INTERIOR %	EXTERIOR %	INTERIOR %	WINTER NIGHTTIME	WINTER ARGON	SHGC	LSG RATIO
GL-1	(SOLARBAN 60 (2) OPTIGRAY + CLEAR GLASS INSULATING GLASS UNIT)	EXTERIOR	50	8	11	0.29	0.24	30	1.67		
GL-2	1/4" CLEAR TEMPERED WITH SECURITY FILM	INTERIOR	N/A	N/A	N/A	N/A	N/A	N/A	N/A	N/A	N/A
GL-3	1/4" CLEAR TEMPERED	INTERIOR	N/A	N/A	N/A	N/A	N/A	N/A	N/A	N/A	N/A
GL-4	1/2" POLYCARBONATE	INTERIOR	N/A	N/A	N/A	N/A	N/A	N/A	N/A	N/A	N/A

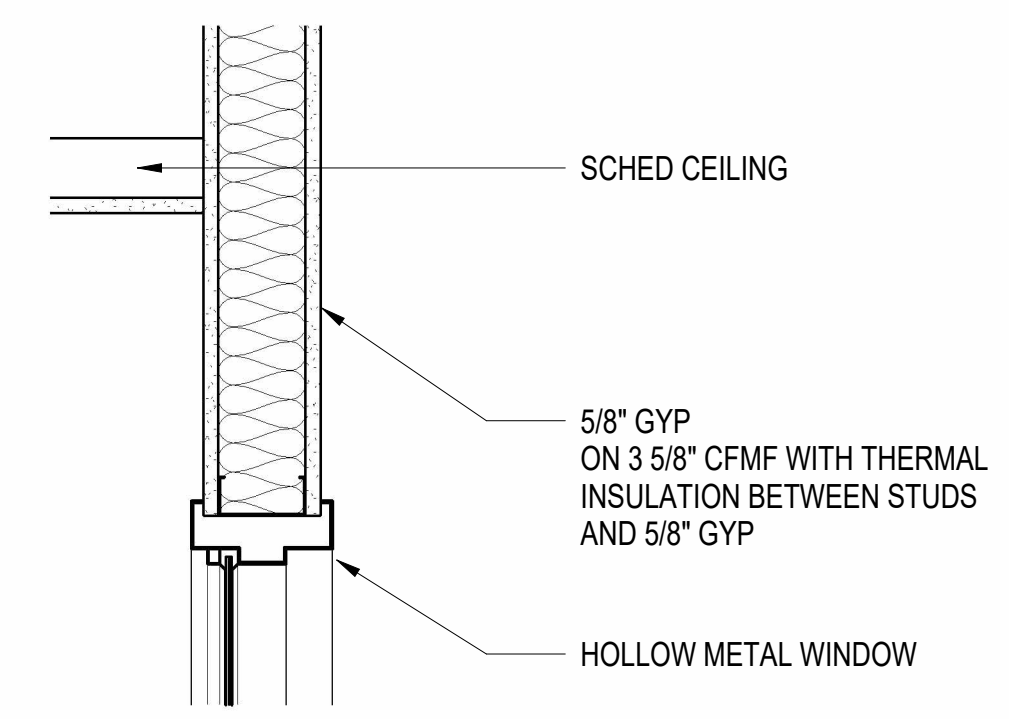
ARCHITECT / ENGINEER
HUITT ZOLLARS
 1001 FANNIN ST, SUITE 4040
 HOUSTON, TX 77002
 713-622-1180
 WWW.HUITT-ZOLLARS.COM

ADVANCED DESIGN™

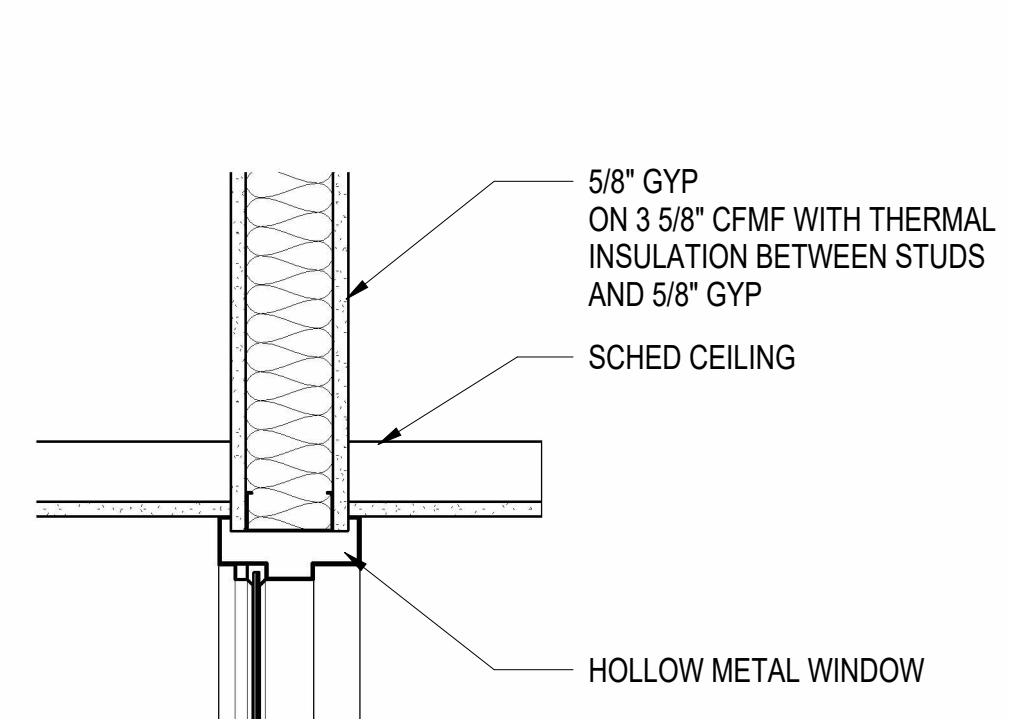
- CONSULTANTS:
- 1. BEHAVIORAL HEALTH**
 HUMAN EXPERIENCE
 401 Hawthorne Lane, Suite 110-124
 Charlotte, NC 28204
 CONTACT: Kevin Turner
 980.288.5847
 - 2. MEP & LOW VOLTAGE**
 E&C ENGINEERS & CONSULTANTS INC.
 1010 Lamar St., Suite 650
 Houston, TX 77002
 CONTACT: Lance McKnight
 713.580.8800
 - 3. STRUCTURAL / CIVIL**
 DALLY + ASSOCIATES, INC.
 9800 Richmond Avenue, Suite 460,
 Houston, TX 77042
 CONTACT: Fred Dally
 713.337.8881
 - 4. TECHNOLOGY**
 ATLAS CONSULTING, INC.
 2339 Commerce Street Suite 118,
 Houston, TX 77002
 CONTACT: William Scabora
 512.468.8300



E

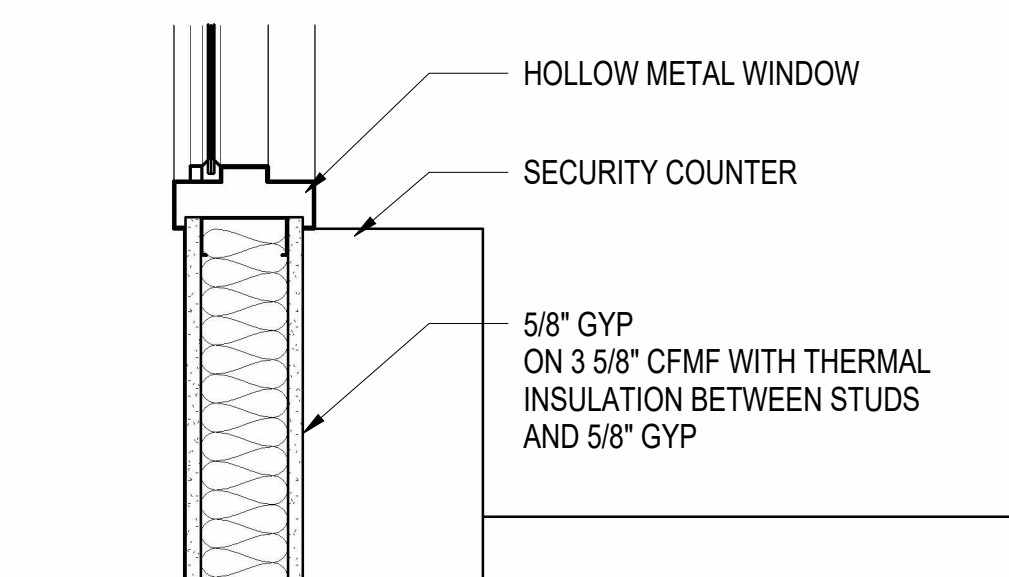


E1 WINDOW HEAD - INT DTL
1 1/2" = 1'-0"

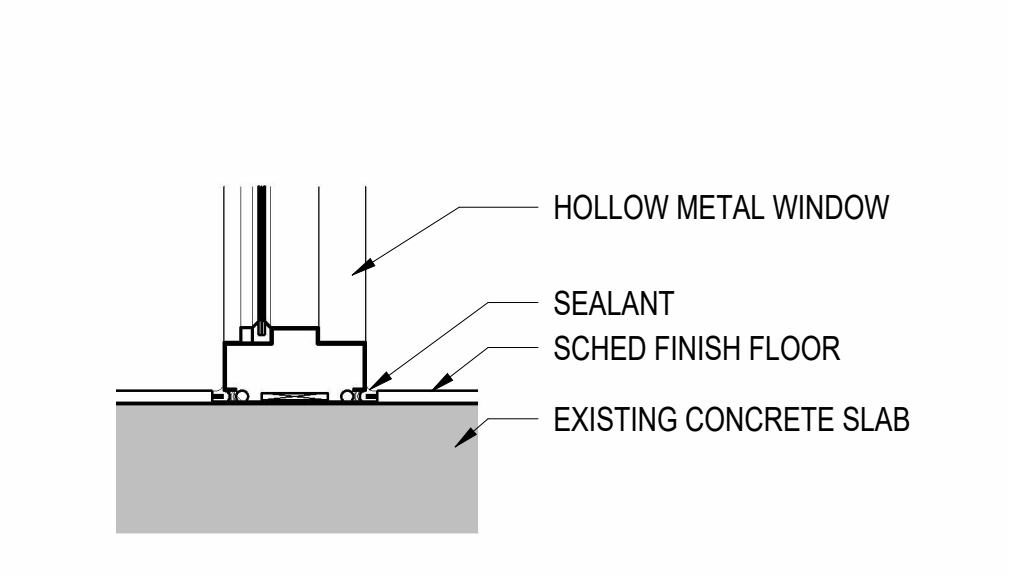


E2 WINDOW HEAD @ CEILING - INT DTL
1 1/2" = 1'-0"

D

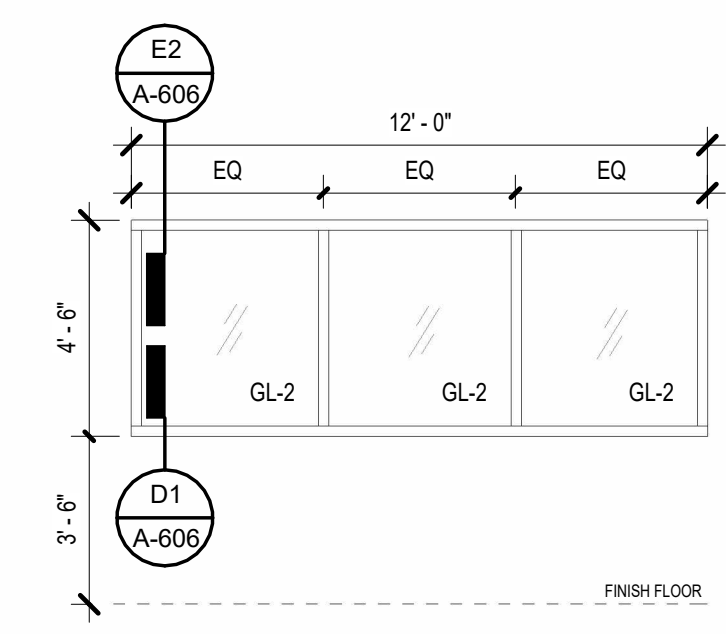


D1 WINDOW SILL @ SECURITY DESK - INT DTL
1 1/2" = 1'-0"

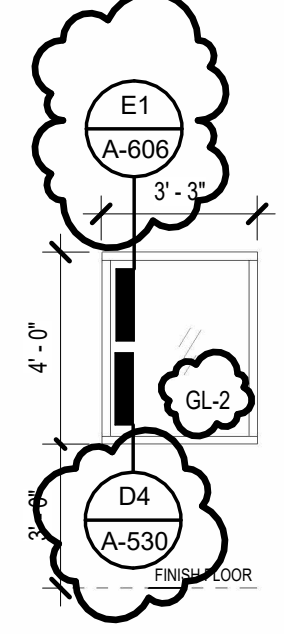


D2 WINDOW SILL @ GROUND - INT DTL
1 1/2" = 1'-0"

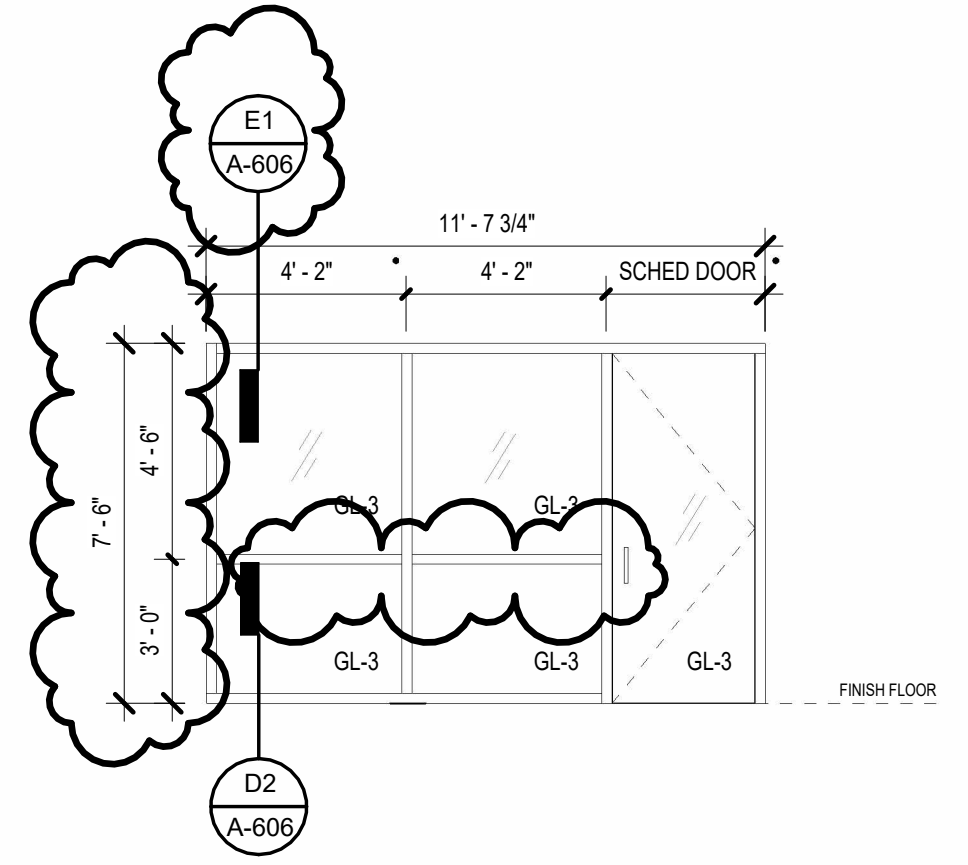
INTERIOR



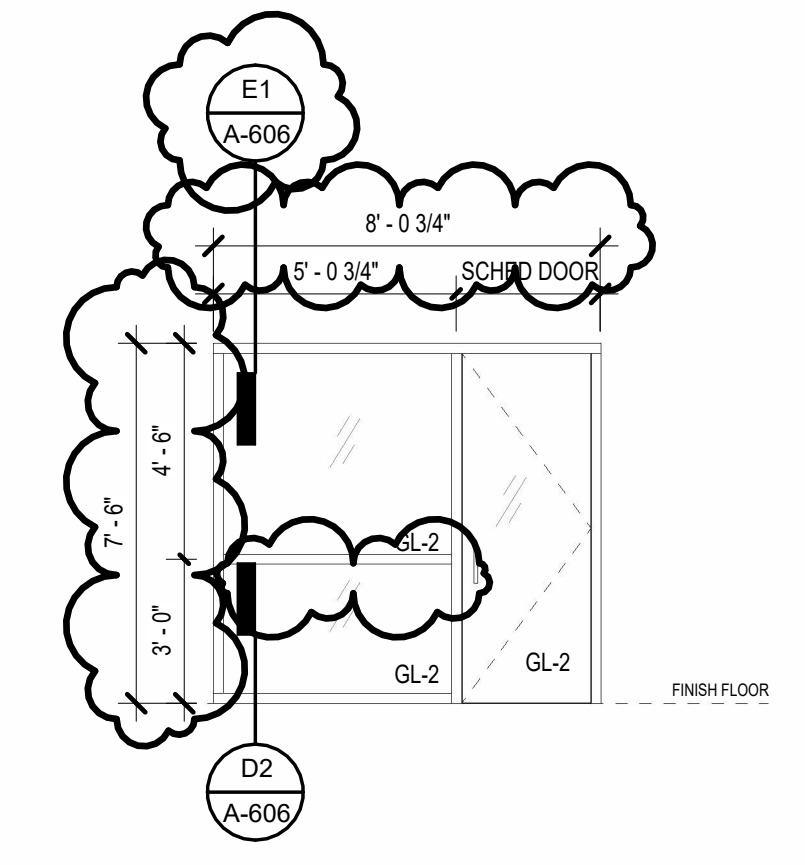
C5 TYPE 14
1/4" = 1'-0"



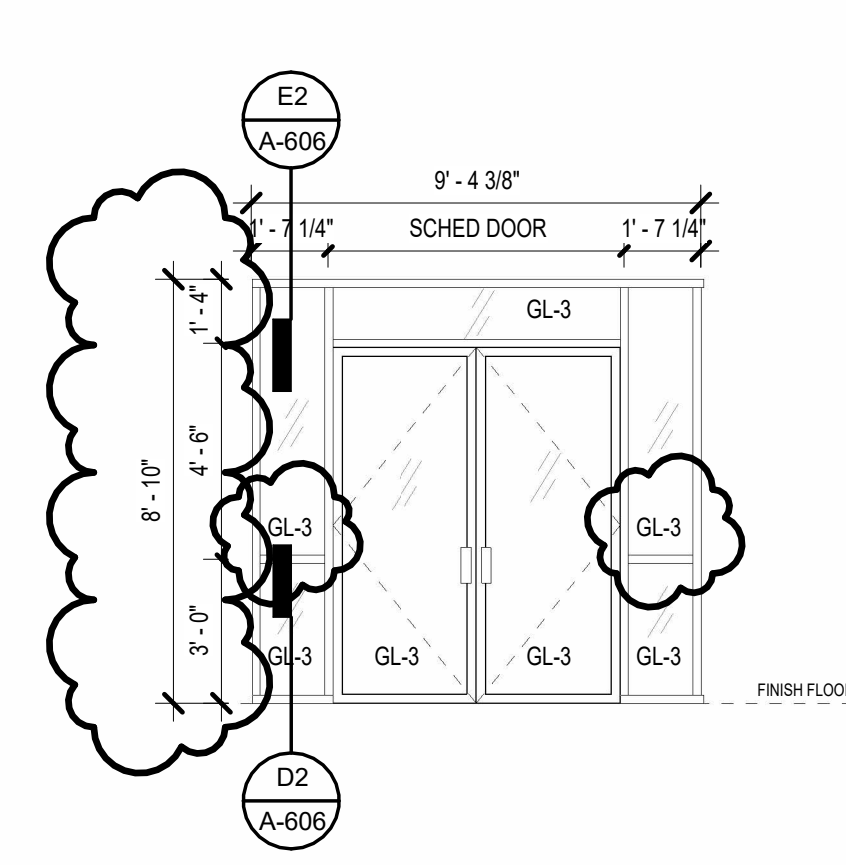
C6 TYPE 13
1/4" = 1'-0"



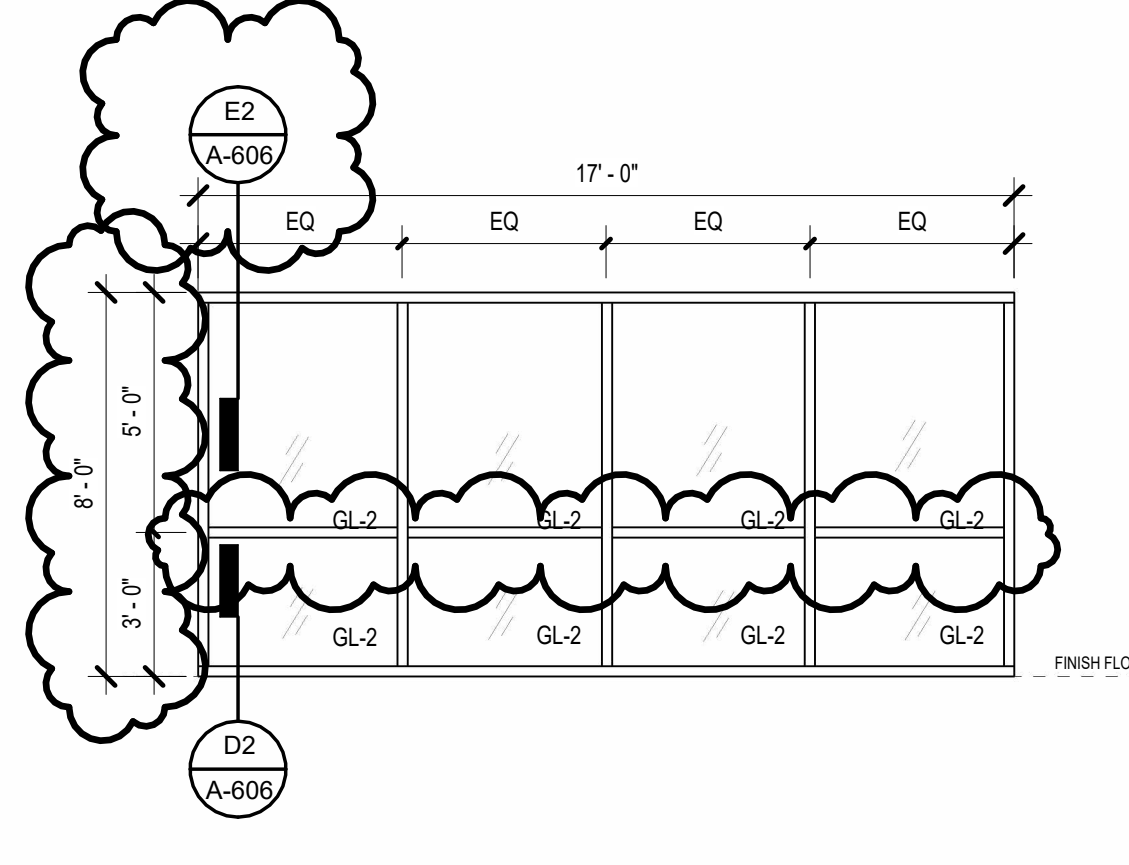
B1 TYPE 12
1/4" = 1'-0"



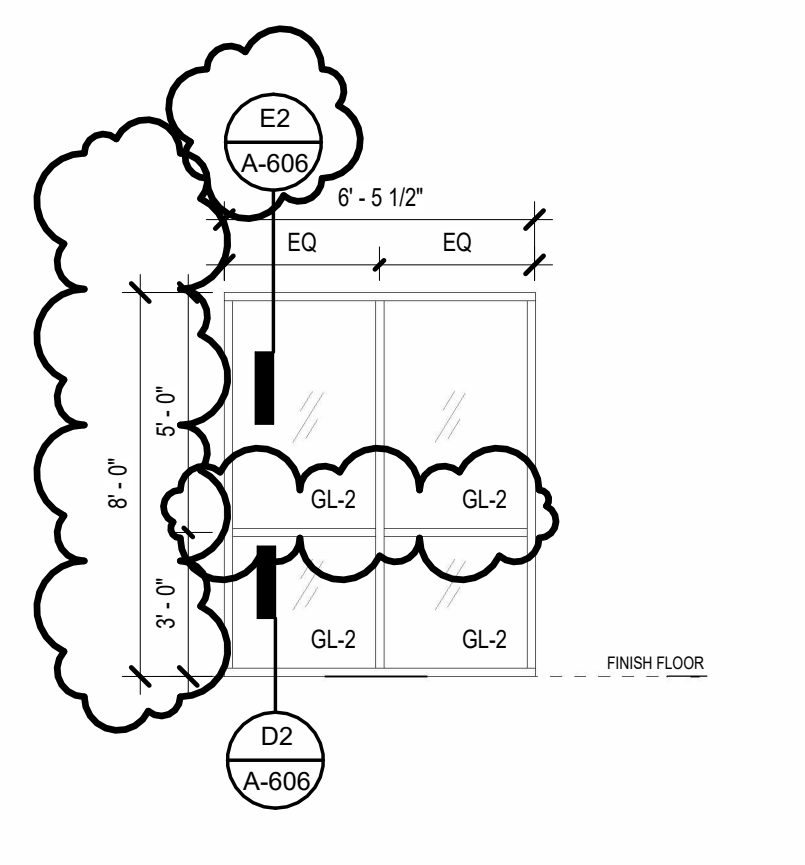
B2 TYPE 11
1/4" = 1'-0"



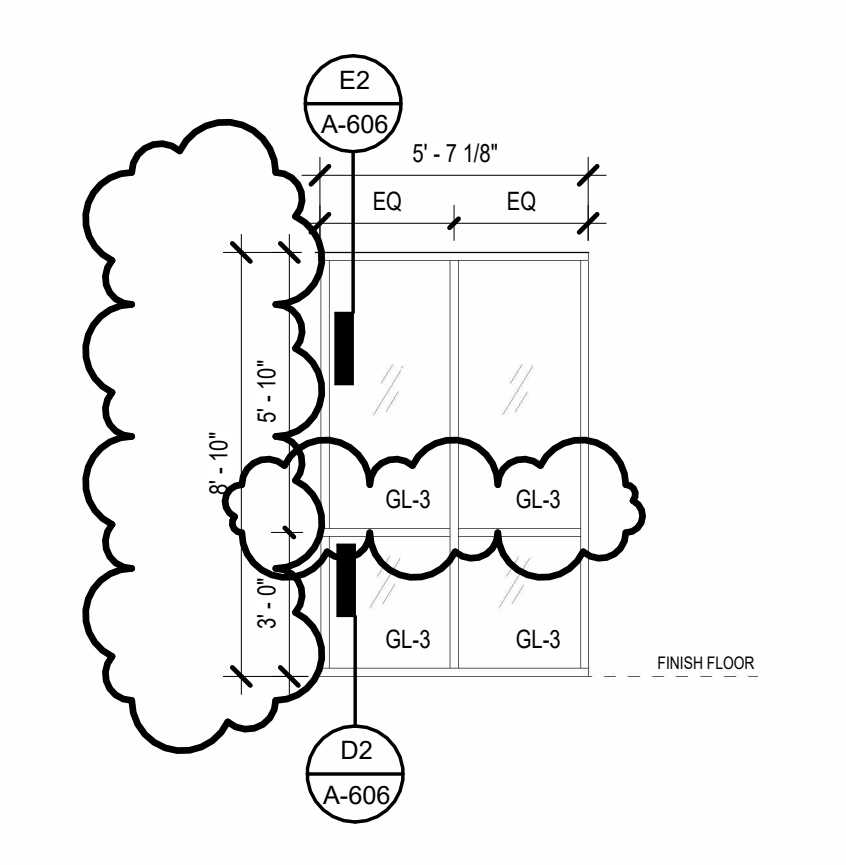
B3 TYPE 10
1/4" = 1'-0"



C3 TYPE 16
1/4" = 1'-0"

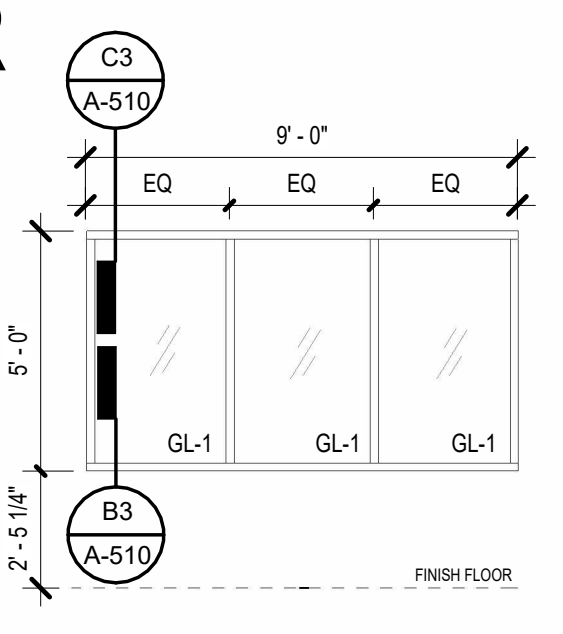


C4 TYPE 15
1/4" = 1'-0"

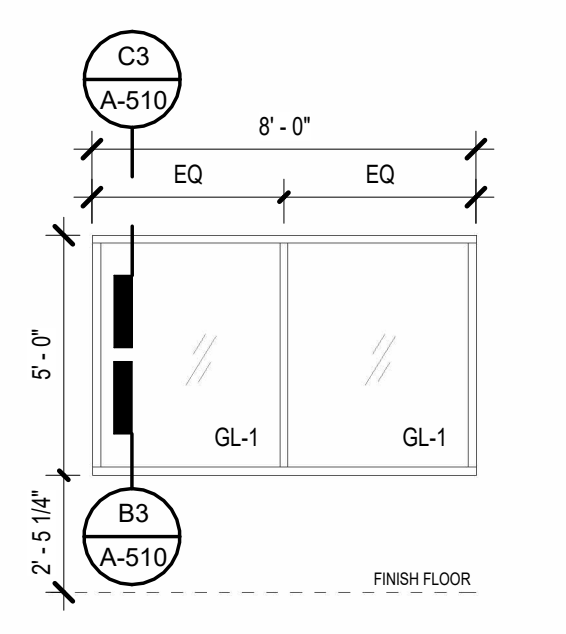


B4 TYPE 09
1/4" = 1'-0"

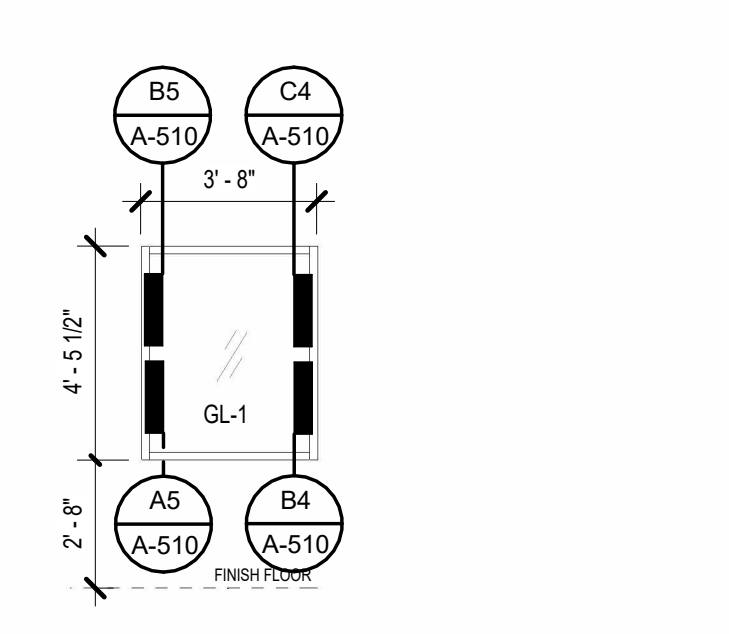
EXTERIOR



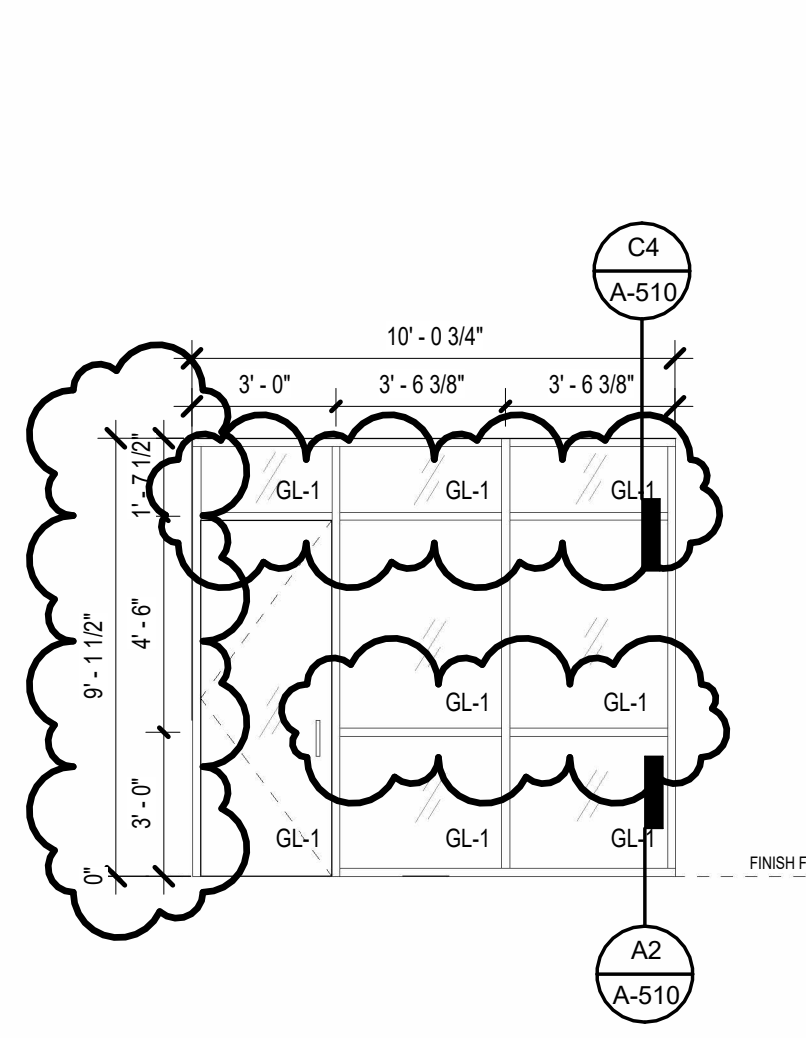
A4 TYPE 03
1/4" = 1'-0"



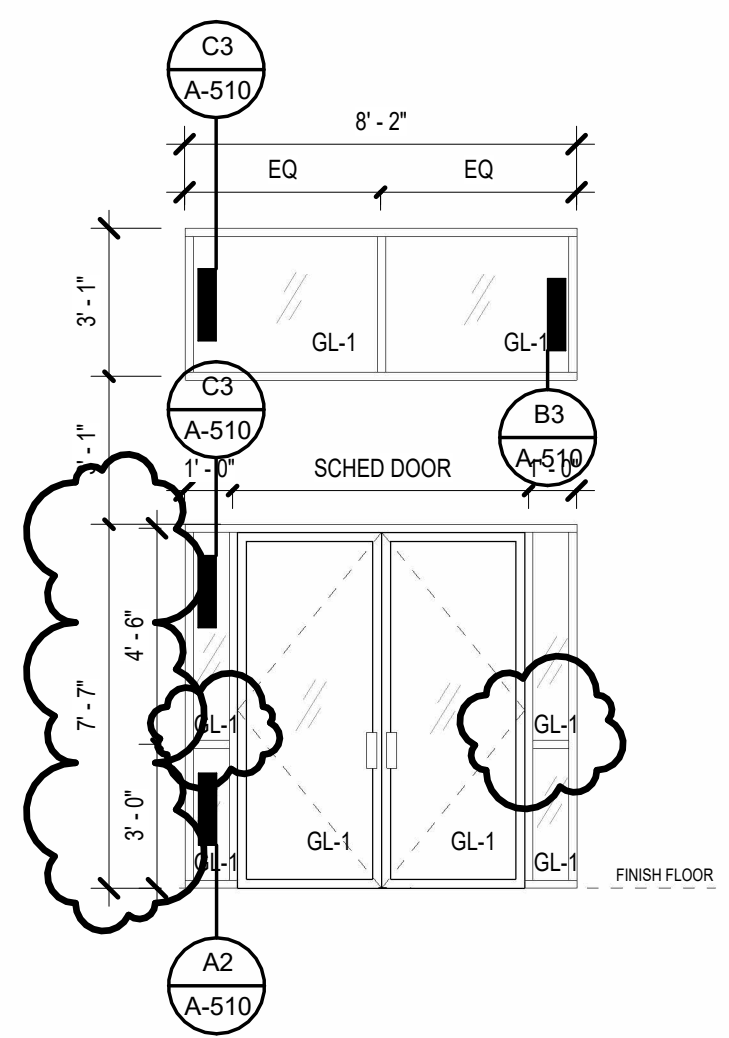
A5 TYPE 02
1/4" = 1'-0"



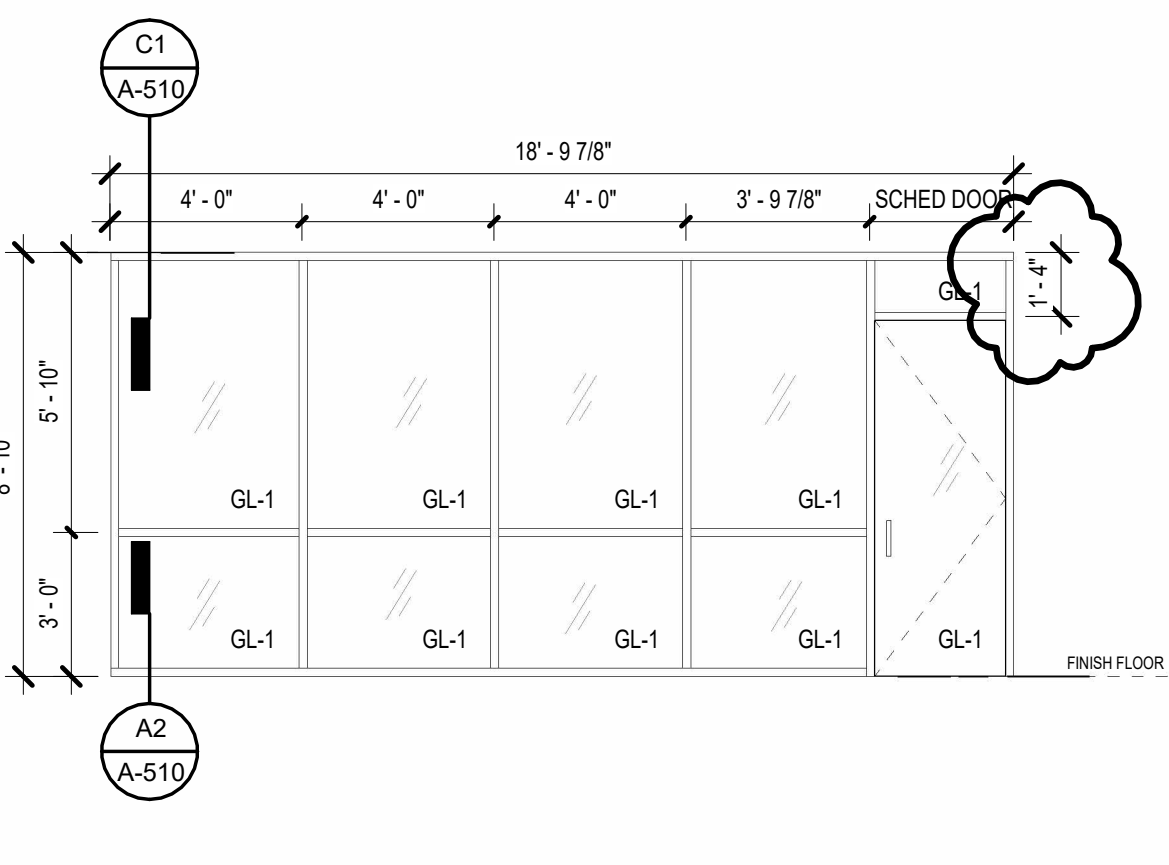
A6 TYPE 01
1/4" = 1'-0"



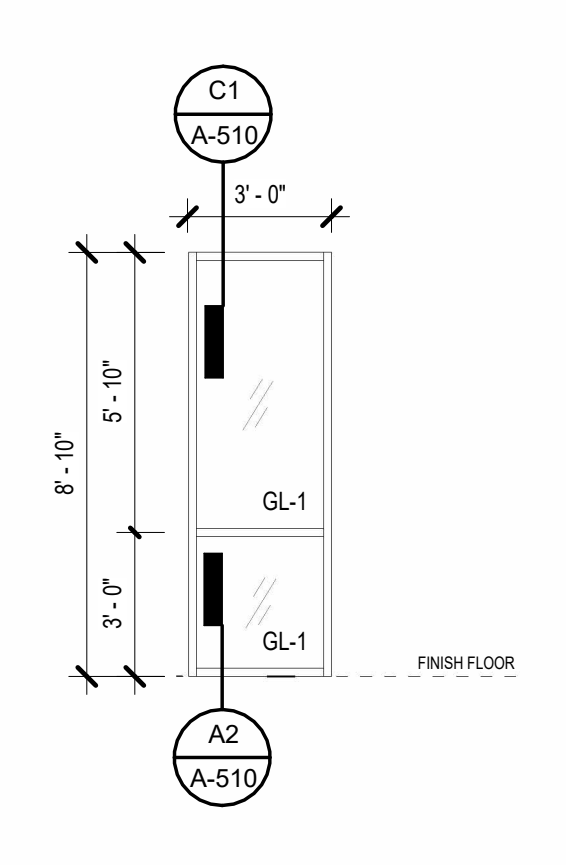
B5 TYPE 08
1/4" = 1'-0"



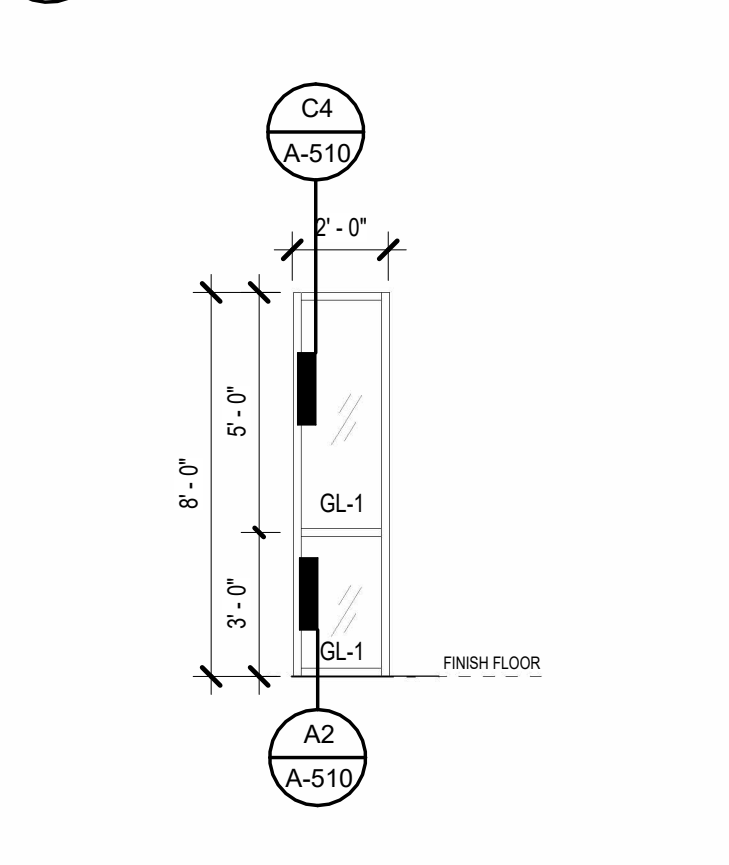
B6 TYPE 07
1/4" = 1'-0"



A1 TYPE 06
1/4" = 1'-0"



A2 TYPE 05
1/4" = 1'-0"



A3 TYPE 04
1/4" = 1'-0"

OWNER:



GALVESTON COUNTY
 722 MOODY AVE., GALVESTON TX 77550

PROJECT:

MENTAL HEALTH EXTENDED OBSERVATION UNIT

PROJECT ADDRESS:
 1207 S Oak Street
 La Marque, TX 77568

ISSUES / REVISIONS LOG:

MARK	DATE	DESCRIPTION
2	12/22/2023	50% CONSTRUCTION DOCUMENTS
3	01/12/2024	100% CONSTRUCTION DOCUMENTS
4	01/31/2024	ADDENDUM 1

PROJECT NO.: R316955.01
 DRAWN BY: Author
 REVIEWED BY: Checker
 APPROVED BY: Approver

SHEET TITLE:

WINDOW SCHEDULE AND DETAILS

SHEET NUMBER:

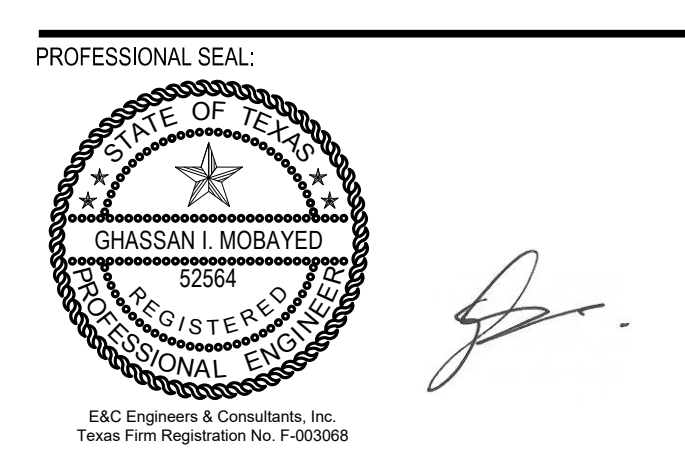
A-606

COPYRIGHT © 2023 HUITT-ZOLLARS, INC.

Autodesk Docs://Mental Health Extended Observation Unit.R316955.01 Mental Health Extended Observation Unit.rvt
 1/25/2024 5:24:12 PM

ADVANCEDESIGN™

- CONSULTANTS:
- BEHAVIORAL HEALTH**
 HUMAN EXPERIENCE
 401 Hawthorne Lane, Suite 110-124
 Charlotte, NC 28204
 CONTACT: Kevin Turner
 980.288.5847
 - MEP**
 E&C ENGINEERS & CONSULTANTS INC.
 1010 Lamar St., Suite 650
 Houston, TX 77002
 713.580.8800
 TX Firm Registration No: F-003068
 - STRUCTURAL / CIVIL**
 DALLY + ASSOCIATES, INC.
 9800 Richmond Avenue, Suite 460,
 Houston, TX 77042
 CONTACT: Fred Dally
 713.337.8881
 - TECHNOLOGY**
 ATLAS CONSULTING, INC.
 2339 Commerce Street Suite 118,
 Houston, TX 77002
 CONTACT: William Scabora
 512.468.8300



PROJECT:
**MENTAL HEALTH
 EXTENDED
 OBSERVATION UNIT**
 PROJECT ADDRESS:
 1207 S Oak Street
 La Marque, TX 77568

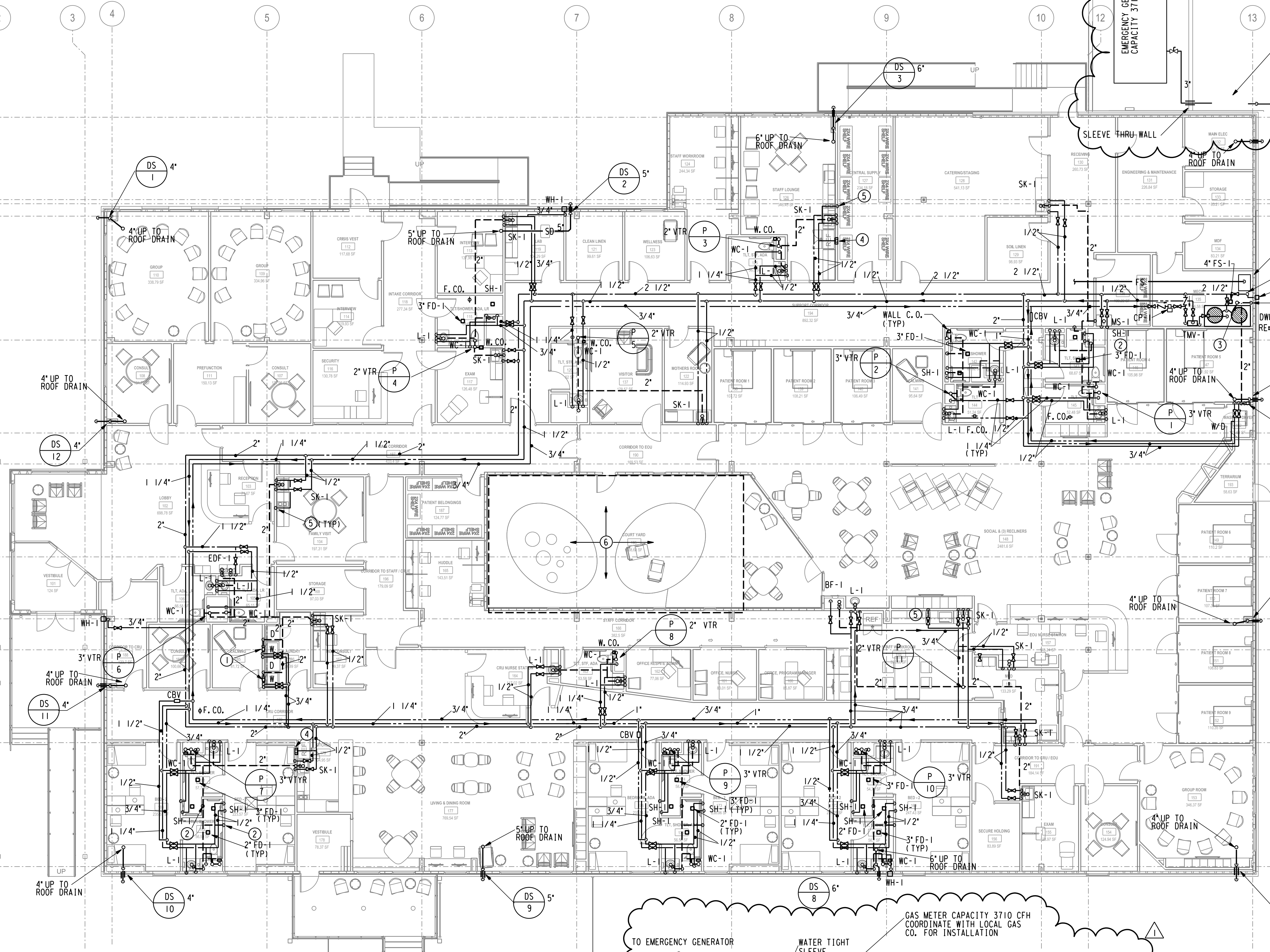
ISSUES / REVISIONS LOG:

MARK	DATE	DESCRIPTION
	11/22/2023	ISSUED FOR DESIGN DEVELOPMENT
	12/20/2023	ISSUED FOR 50% CD
	01/12/2024	100% CONSTRUCTION DOCUMENTS
△	01/30/2024	ADDENDUM 01

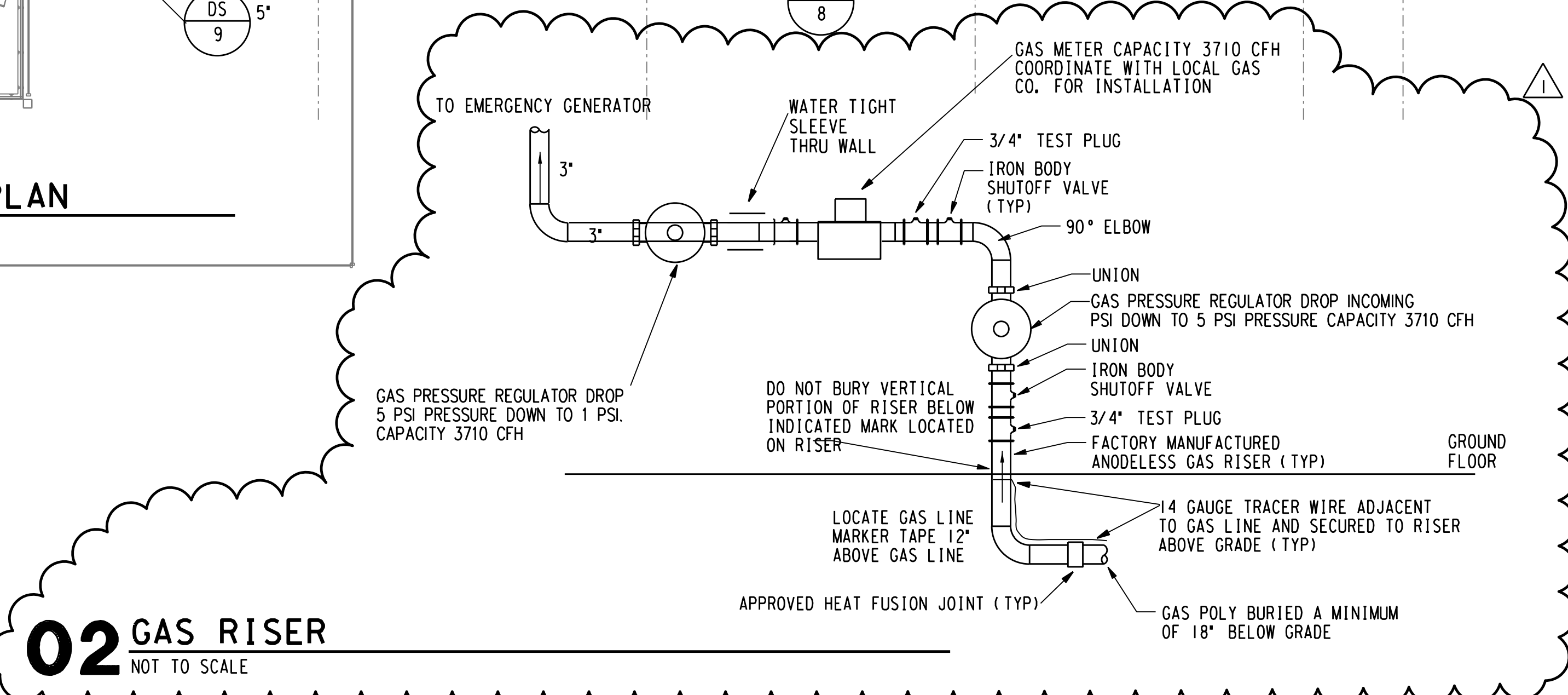
PROJECT NO.: R316595.01 E&C No.:4213
 DRAWN BY: GM
 REVIEWED BY: GM
 APPROVED BY: GM
 SHEET TITLE:

FIRE PROTECTION NOTE:
 BUILDING SHALL BE FULLY PROTECTED BY A WET PIPE FIRE SPRINKLER SYSTEM DESIGNED AND INSTALLED IN ACCORDANCE WITH NFPA 13, LOCAL AND STATE FIRE CODES AND OTHER APPLICABLE CODES AND REQUIREMENTS. REFER TO SPECIFICATIONS FOR FIRE SPRINKLER HEADS, PIPING, FITTINGS AND FIRE PROTECTION MATERIALS AND OTHER REQUIREMENTS. FIRE PROTECTION CONTRACTOR SHALL SUBMIT FIRE PROTECTION SHOP DRAWINGS AND HYDRAULIC CALCULATIONS FOR THE FIRE SPRINKLER SYSTEM IN ACCORDANCE WITH NFPA 13 AND LOCAL AND STATE FIRE CODES.

GAS METER AND REGULATOR CAPACITY 3710 CFH, DROP INCOMING 5 PSI DOWN TO 1 PSI. COORDINATE WITH EMERGENCY GENERATOR MANUFACTURER REQUIREMENT. COORDINATE WITH CENTERPOINT LOCAL GAS COMPANY FOR FEES AND INSTALLATION.



01 LEVEL 1 - PLUMBING PIPING PLAN
 SCALE: 1/8" = 1'-0"



02 GAS RISER
 NOT TO SCALE

- DRAWING NOTES:**
- WASHER CONNECTION BOX WITH 2" WASTE DN, 2" VENT UP, 1/2" HOT AND COLD WATER DN.
 - 2" VENT DN.
 - 2" VENT THRU ROOF.
 - REF. WATER CONNECTION VALVE BOX BY CUY GRAY B1M 875 OR EQUAL.
 - 1/2" CW DN TO COFFEE MAKER. TERMINATE 6" ABOVE COUNTER BEHIND COFFEE MAKER WITH WALL ESCUTCHEON PLATE AND SHUTOFF VALVE.
 - PLUMBING CONTRACTOR TO CLEAR DEBRIS FROM COURT YARD AREA STORM DRAINS AND PIPING TO ENSURE A FREE FLOW TO SITE DRAINAGE SYSTEM.

**PLUMBING PIPING
 PLAN - LEVEL 1**