



THE COUNTY OF GALVESTON

RUFUS G. CROWDER, CPPO, CPPB
PURCHASING AGENT

COUNTY COURTHOUSE
722 Moody (21st Street)
Fifth (5th) Floor
GALVESTON, TEXAS 77550

March 14, 2023

PROJECT NAME: Video Conferencing Portion of the Covid-19 Confinement Portion Facilities
SOLICITATION NO: RFP #B231014
RE: ADDENDUM #2

To All Prospective Proposers:

The following information is being provided to aid in the preparation of your RFP submittal(s):

Question #1: *I am requesting floor plans of the Justice Center courts and Juvenile Center courts.*

Response: Attached you will find the requested information.

Question #2: *I am also requesting a list of the existing AV equipment we will be interfacing with in this project.*

Response: Attached you will find the requested information.

Question #3: *Who is the incumbent AV company – the one who is installing/integrating now, and are they allowed to bid on this RFP if they were not at the mandatory walk-through Tuesday?*

Response: CTI. Because the walkthrough was mandatory, anyone who was not at the walk-through is not permitted to bid on the current project.

If you have any further questions regarding this bid, please address them to the representative listed below, via e-mail at purchasing.bids@co.galveston.tx.us, or contact the Purchasing Department at (409) 770-5371.

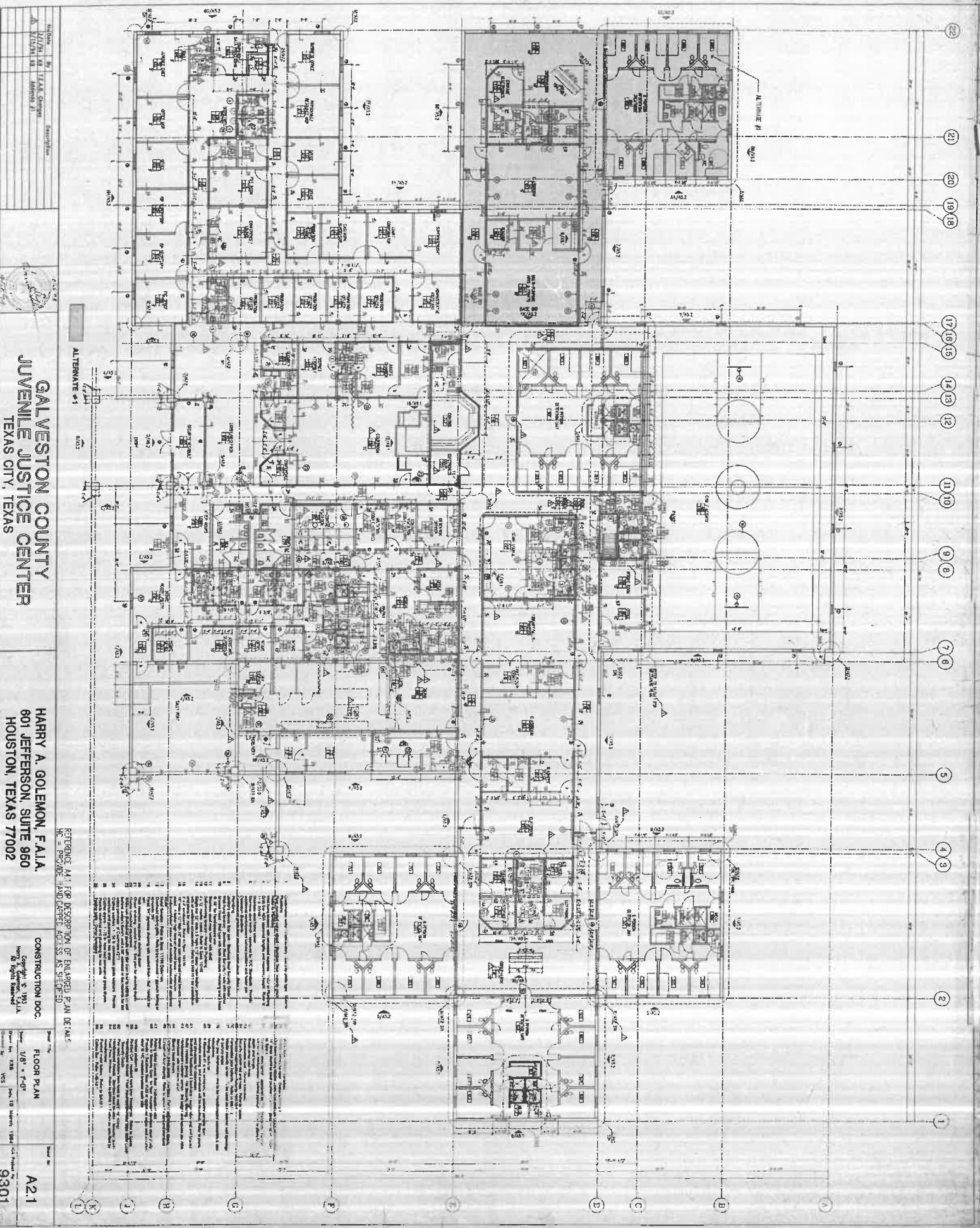
Rufus G. Crowder, CPPO CPPB
Galveston County Purchasing Agent
722 Moody, Fifth (5th) Floor
Galveston, Texas 77550
E-mail: purchasing.bids@co.galveston.tx.us

Please excuse us for any inconvenience that this may have caused.

Sincerely,

A handwritten signature in black ink that reads "Rufus Crowder" with a stylized flourish at the end.

Rufus G. Crowder, CPPO CPPB
Purchasing Agent
Galveston County



Revision	Date	Description
1	1/1/78	ISSUED FOR PERMITS
2	1/1/78	ISSUED FOR PERMITS
3	1/1/78	ISSUED FOR PERMITS



**GALVESTON COUNTY
JUVENILE JUSTICE CENTER**
TEXAS CITY, TEXAS

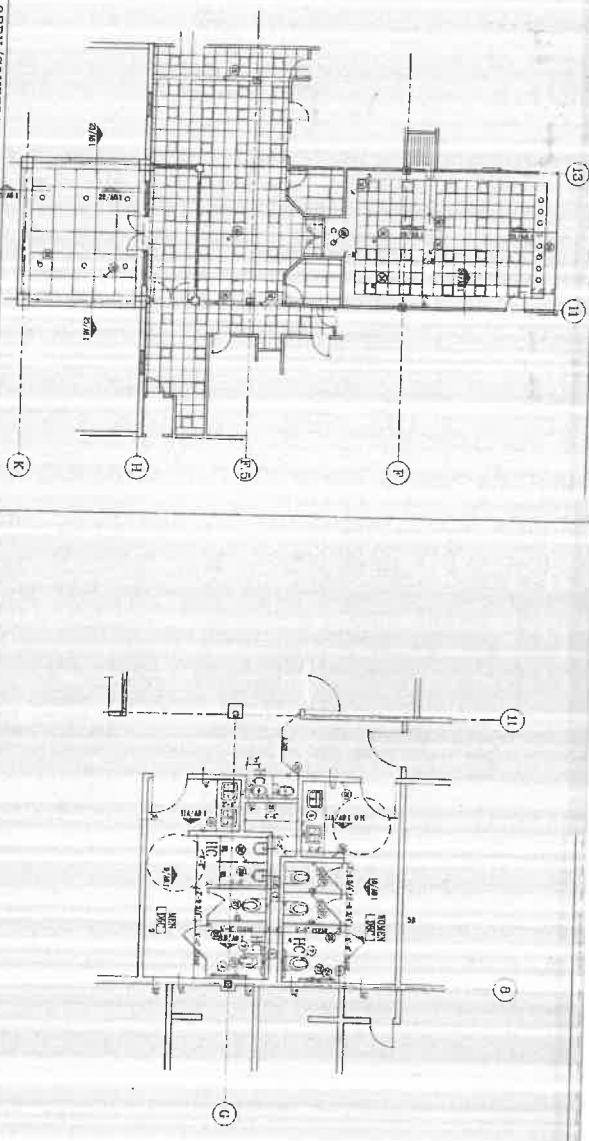
HARRY A. GOLEMON, F.A.I.A.
801 JEFFERSON, SUITE 950
HOUSTON, TEXAS 77002

CONSTRUCTION DOC.
Scale: 1/8" = 1'-0"
All Rights Reserved

FLOOR PLAN
Scale: 1/8" = 1'-0"
Date: 12/18/77
Sheet No: 9301

REFERENCE: A.I.A. FOR DESCRIPTION OF ENLARGED P.L.M. DETAIL.
HC = PRECAST CONCRETE; AC = ASBESTOS CEMENT SHEET; SS = STEEL; ST = STONE

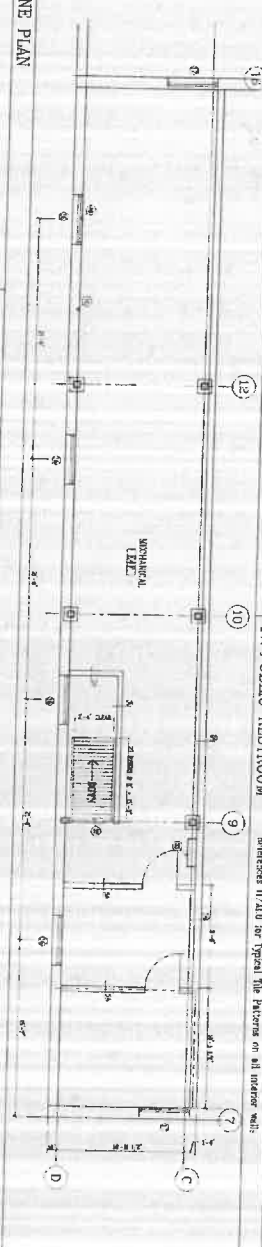
- 1. ALL ROOMS SHALL BE FINISHED WITH 1/2" GYP BOARD ON 2" X 4" JOISTS.
- 2. ALL WALLS SHALL BE FINISHED WITH 1/2" GYP BOARD ON 2" X 4" JOISTS.
- 3. ALL CEILING SHALL BE FINISHED WITH 1/2" GYP BOARD ON 2" X 4" JOISTS.
- 4. ALL FLOORS SHALL BE FINISHED WITH 1/2" GYP BOARD ON 2" X 4" JOISTS.
- 5. ALL DOORS SHALL BE FINISHED WITH 1/2" GYP BOARD ON 2" X 4" JOISTS.
- 6. ALL WINDOWS SHALL BE FINISHED WITH 1/2" GYP BOARD ON 2" X 4" JOISTS.
- 7. ALL EXTERIOR WALLS SHALL BE FINISHED WITH 1/2" GYP BOARD ON 2" X 4" JOISTS.
- 8. ALL EXTERIOR ROOFS SHALL BE FINISHED WITH 1/2" GYP BOARD ON 2" X 4" JOISTS.
- 9. ALL EXTERIOR FLOORS SHALL BE FINISHED WITH 1/2" GYP BOARD ON 2" X 4" JOISTS.
- 10. ALL EXTERIOR CEILING SHALL BE FINISHED WITH 1/2" GYP BOARD ON 2" X 4" JOISTS.
- 11. ALL EXTERIOR WALLS SHALL BE FINISHED WITH 1/2" GYP BOARD ON 2" X 4" JOISTS.
- 12. ALL EXTERIOR ROOFS SHALL BE FINISHED WITH 1/2" GYP BOARD ON 2" X 4" JOISTS.
- 13. ALL EXTERIOR FLOORS SHALL BE FINISHED WITH 1/2" GYP BOARD ON 2" X 4" JOISTS.
- 14. ALL EXTERIOR CEILING SHALL BE FINISHED WITH 1/2" GYP BOARD ON 2" X 4" JOISTS.
- 15. ALL EXTERIOR WALLS SHALL BE FINISHED WITH 1/2" GYP BOARD ON 2" X 4" JOISTS.
- 16. ALL EXTERIOR ROOFS SHALL BE FINISHED WITH 1/2" GYP BOARD ON 2" X 4" JOISTS.
- 17. ALL EXTERIOR FLOORS SHALL BE FINISHED WITH 1/2" GYP BOARD ON 2" X 4" JOISTS.
- 18. ALL EXTERIOR CEILING SHALL BE FINISHED WITH 1/2" GYP BOARD ON 2" X 4" JOISTS.
- 19. ALL EXTERIOR WALLS SHALL BE FINISHED WITH 1/2" GYP BOARD ON 2" X 4" JOISTS.
- 20. ALL EXTERIOR ROOFS SHALL BE FINISHED WITH 1/2" GYP BOARD ON 2" X 4" JOISTS.
- 21. ALL EXTERIOR FLOORS SHALL BE FINISHED WITH 1/2" GYP BOARD ON 2" X 4" JOISTS.
- 22. ALL EXTERIOR CEILING SHALL BE FINISHED WITH 1/2" GYP BOARD ON 2" X 4" JOISTS.
- 23. ALL EXTERIOR WALLS SHALL BE FINISHED WITH 1/2" GYP BOARD ON 2" X 4" JOISTS.
- 24. ALL EXTERIOR ROOFS SHALL BE FINISHED WITH 1/2" GYP BOARD ON 2" X 4" JOISTS.
- 25. ALL EXTERIOR FLOORS SHALL BE FINISHED WITH 1/2" GYP BOARD ON 2" X 4" JOISTS.
- 26. ALL EXTERIOR CEILING SHALL BE FINISHED WITH 1/2" GYP BOARD ON 2" X 4" JOISTS.
- 27. ALL EXTERIOR WALLS SHALL BE FINISHED WITH 1/2" GYP BOARD ON 2" X 4" JOISTS.
- 28. ALL EXTERIOR ROOFS SHALL BE FINISHED WITH 1/2" GYP BOARD ON 2" X 4" JOISTS.
- 29. ALL EXTERIOR FLOORS SHALL BE FINISHED WITH 1/2" GYP BOARD ON 2" X 4" JOISTS.
- 30. ALL EXTERIOR CEILING SHALL BE FINISHED WITH 1/2" GYP BOARD ON 2" X 4" JOISTS.



18. LOBBY/COURTROOM - CHILING PLAN

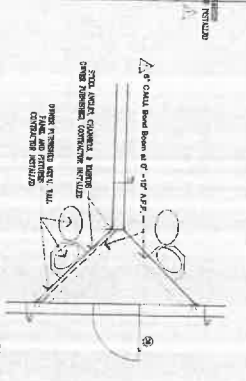
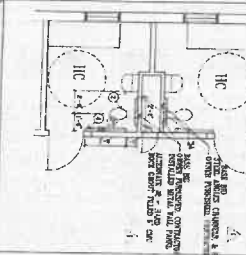
17. PUBLIC RESTROOM

Reference II 410 for typical tile patterns on all interior walls.



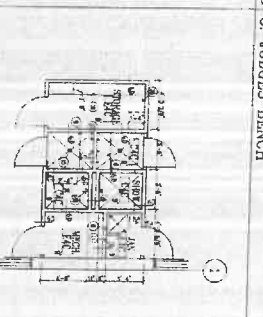
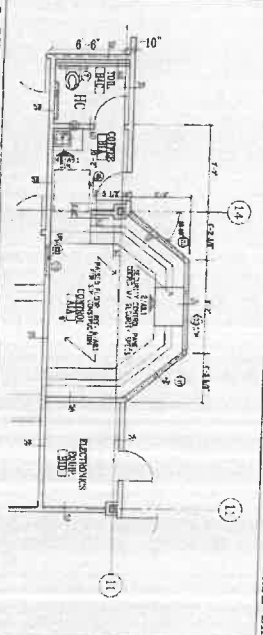
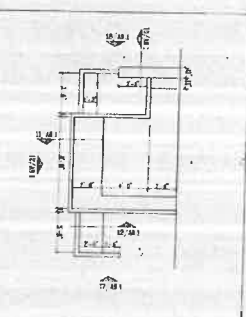
14. MEZZANINE PLAN

15. HC CELL @ RESIDENTIAL



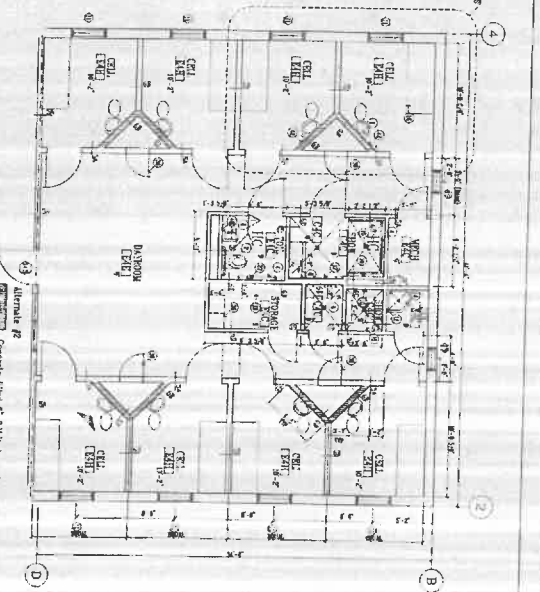
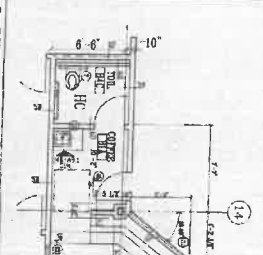
9. TYP. CELL WALL CONSTRUCTION - BASE BID

8. JUDGES BENCH



3. NON-HAND HOUSING UTILITY CORE

5. BUILDING CONTROL CENTER



2. TYPICAL DETENTION UNIT

**GALVESTON COUNTY
JUVENILE JUSTICE CENTER**
TEXAS CITY, TEXAS

HARRY A. GOLEMON, F.A.I.A.
601 JEFFERSON, SUITE 950
HOUSTON, TEXAS 77002

CONTRACT DOC.
Copyright © 1993
Hartel, Smith & Partners
Houston, Texas

NOTES TO SHEET
ENLARGED PLANS
Scale: 1/4" = 1'-0"
Drawing No. 438
Rev. 3.14.1992
DOC. No. 9301

No.	Date	By	Description
1	1/27/93	ASB	As noted

Bill of Materials

Added Items

Manufacturer	P/N	Description	Qty
Audio Systems Equipment: \$33,714.94			
Biamp	911.0450.900	TesiraFORTE AVB VT	1
Biamp	911.0450.900	TesiraFORTE AVB VT	1
Biamp	911.0450.900	TesiraFORTE AVB VT	1
Biamp	911.0450.900	TesiraFORTE AVB VT	1
Biamp	911.0450.900	TesiraFORTE AVB VT	1
Biamp	911.0450.900	TesiraFORTE AVB VT	1
Biamp	911.0450.900	TesiraFORTE AVB VT	1
Biamp	911.0450.900	TesiraFORTE AVB VT	1
Biamp	911.0450.900	TesiraFORTE AVB VT	1
Biamp	911.0450.900	TesiraFORTE AVB VT	1
Biamp	911.0450.900	TesiraFORTE AVB VT	1
Biamp	911.0450.900	TesiraFORTE AVB VT	1
Biamp	911.0450.900	TesiraFORTE AVB VT	1
Biamp	911.0450.900	TesiraFORTE AVB VT	1
Biamp	911.0450.900	TesiraFORTE AVB VT	1
Biamp	911.0341.900	Tesira EX-AEC	2
Biamp	911.0039.900	TesiraCONNECT TC-5	1

Total Adds:

Canceled/Returned Items

Manufacturer	P/N	Description	Qty
Audio Systems Equipment: (\$32,900.00)			
QSC	CORE 110f	DSP: Unified Core with 24 local audio I/O channels, 128x128 total network I/O channels with 8x8 Software-based Dante license included, USB AV bridging, dual LAN ports, POTS and VoIP telephony, 16x16 GPIO, 16 next-generation AEC processors, 1RU.	-1
QSC	CORE 110f	DSP: Unified Core with 24 local audio I/O channels, 128x128 total network I/O channels with 8x8 Software-based Dante license included, USB AV bridging, dual LAN ports, POTS and VoIP telephony, 16x16 GPIO, 16 next-generation AEC processors, 1RU.	-1
QSC	CORE 110f	DSP: Unified Core with 24 local audio I/O channels, 128x128 total network I/O channels with 8x8 Software-based Dante license included, USB AV bridging, dual LAN ports, POTS and VoIP telephony, 16x16 GPIO, 16 next-generation AEC processors, 1RU.	-1
QSC	CORE 110f	DSP: Unified Core with 24 local audio I/O channels, 128x128 total network I/O channels with 8x8 Software-based Dante license included, USB AV bridging, dual LAN ports, POTS and VoIP telephony, 16x16 GPIO, 16 next-generation AEC processors, 1RU.	-1
QSC	CORE 110f	DSP: Unified Core with 24 local audio I/O channels, 128x128 total network I/O channels with 8x8 Software-based Dante license included, USB AV bridging, dual LAN ports, POTS and VoIP telephony, 16x16 GPIO, 16 next-generation AEC processors, 1RU.	-1
QSC	CORE 110f	DSP: Unified Core with 24 local audio I/O channels, 128x128 total network I/O channels with 8x8 Software-based Dante license included, USB AV bridging, dual LAN ports, POTS and VoIP telephony, 16x16 GPIO, 16 next-generation AEC processors, 1RU.	-1
QSC	CORE 110f	DSP: Unified Core with 24 local audio I/O channels, 128x128 total network I/O channels with 8x8 Software-based Dante license included, USB AV bridging, dual LAN ports, POTS and VoIP telephony, 16x16 GPIO, 16 next-generation AEC processors, 1RU.	-1
QSC	CORE 110f	DSP: Unified Core with 24 local audio I/O channels, 128x128 total network I/O channels with 8x8 Software-based Dante license included, USB AV bridging, dual LAN ports, POTS and VoIP telephony, 16x16 GPIO, 16 next-generation AEC processors, 1RU.	-1
QSC	CORE 110f	DSP: Unified Core with 24 local audio I/O channels, 128x128 total network I/O channels with 8x8 Software-based Dante license included, USB AV bridging, dual LAN ports, POTS and VoIP telephony, 16x16 GPIO, 16 next-generation AEC processors, 1RU.	-1
QSC	CORE 110f	DSP: Unified Core with 24 local audio I/O channels, 128x128 total network I/O channels with 8x8 Software-based Dante license included, USB AV bridging, dual LAN ports, POTS and VoIP telephony, 16x16 GPIO, 16 next-generation AEC processors, 1RU.	-1
QSC	CORE 110f	DSP: Unified Core with 24 local audio I/O channels, 128x128 total network I/O channels with 8x8 Software-based Dante license included, USB AV bridging, dual LAN ports, POTS and VoIP telephony, 16x16 GPIO, 16 next-generation AEC processors, 1RU.	-1
QSC	CORE 110f	DSP: Unified Core with 24 local audio I/O channels, 128x128 total network I/O channels with 8x8 Software-based Dante license included, USB AV bridging, dual LAN ports, POTS and VoIP telephony, 16x16 GPIO, 16 next-generation AEC processors, 1RU.	-1
QSC	CORE 110f	DSP: Unified Core with 24 local audio I/O channels, 128x128 total network I/O channels with 8x8 Software-based Dante license included, USB AV bridging, dual LAN ports, POTS and VoIP telephony, 16x16 GPIO, 16 next-generation AEC processors, 1RU.	-1
QSC	CORE 110f	DSP: Unified Core with 24 local audio I/O channels, 128x128 total network I/O channels with 8x8 Software-based Dante license included, USB AV bridging, dual LAN ports, POTS and VoIP telephony, 16x16 GPIO, 16 next-generation AEC processors, 1RU.	-1

Total Credits:

Manufacturer - P/N - Description - Qty

Jury Assembly Room

Samsung QE82T 82" Audience Display 2

Samsung QE75T 75" Courtroom Displays 2

Samsung QE55T 55" Judge Confidence Display and Courtroom Displays 4

NEC NP-PA804UL-W-41 NP-PA804UL with NP41ZL lens. Bundle includes PA804UL projector and NP41ZL lens, WHITE, 5 Year Warranty 2
OFE OFE OFE screen fabric to be installed 2

Peerless PRG-UNV-W Projector Mount - Universal Adapter Plate 2

Peerless SF660 Universal Flat Mount For 39" to 80" TV's 2

Peerless ST680 Universal Tilt Mount For 60" to 98" TV's 2

Peerless ACC912 55" Display Ceiling Plate 4

Peerless ACC640-W 55" Display Ceiling Ring 4

Peerless ADD1012 55" Display Pipe 4

Peerless PLCM-2-UNL 55" Display Ceiling Mount 4

NEC EA271U-BK 27" Judge Monitor - MultiSync EA271U-BK - 3 Year Warranty 1

NEC E221N-BK 23" Clerk Monitors - MultiSync E221N-BK 3 Year Warranty 4

Video Systems Equipment:

AVPro Edge AC-MXNET-1G-EWP MXNet 1G encoder in a standard dual-gang wall plate format making audio/video connection points look sleek and professional. 5

AVPro Edge AC-MXNET-1G-D Decoder; HDMI, USB, IR, RS232, Fiber & RJ45 11

AVPro Edge AC-MXNET-CBOX Control Box for MXNET System 1

WolfVision 102026 Document Camera: Visualizer VZ-8.UHD - Version A (HDMI) 1

Extron 60-1614-01 VGA TO HDMI SCALER: DVC RGB-HD A 1

Audio Systems Equipment:

QSC CORE 110f DSP: Unified Core with 24 local audio I/O channels, 128x128 total network I/O channels with 8x8 Software-based Dante license included, USB AV bridging, dual LAN ports, POTS and VoIP telephony, 16x16 GPIO, 16 next-generation AEC processors, 1RU. 1

QSC I/O-8 FLEX DSP Expander: Q-SYS I/O peripheral providing 8 individual, software-switchable Q-SYS Flex Channels (Mic/Line IP with +48v or Line Level OP). 8x8 GPIO, 1x RS232 and Audio-to-USB Bridging via USB Device Port. Single cable deployments using PoE+ with an Auxiliary DC power input. All mounting hardware included. 1

QSC MP-A80V 1600W FlexAmp technology Hi-Z / Lo-Z amplifier, 8 x 200W into 4?, 8?, 70V and 100V, Highpass filter per channel, GPIO for Remote Standby and Amp Status. 1

QSC MP-A40V 800W FlexAmp technology Hi-Z / Lo-Z amplifier, 4 x 200W into 4?, 8?, 70V and 100V, Highpass filter per channel, GPIO for Remote Standby and Amp Status. 1

Shure MX418D/C Gooseneck Microphone: Cardioid-18" Desktop Gooseneck Condenser Microphone, Attached 10A' XLR Cable, Logic Functions, Programmable Switch and LED Indicator, Attached Desktop Base 5

Audix M3W6 Ceiling Microphone: M3W with longer 6ft microphone cable for 6

Listen LP-51-072-01 Assisted Listening: Advanced Intelligent DSP RF Receiver 12 1

Listen LS-58-072 Assisted Listening: Listen iDSP Advanced Level III Stationar 1

Control Systems Equipment:

AMX FG2106-01 Control Processor: NX-1200 NetLinX NX Integrated Controller with 512 MB RAM, 1600 MIPS Processor, 4 UK of FLASH, 2 Serial Ports, 2 IR Ports, 4 I/O Ports, and IPv6 1

AMX FG5969-53 Touch Panel: MT-702, 7" Modero G5 Tabletop Touch Panel 5

AVPro Edge AC-MXNET-SW48 48-Port RJ45 switch (1G) w/ Intelligent AV Processing 1

Rack Accessories and Furniture: \$753.65

Legrand MFR-1227GE 12SP27D MOBILE F RACK GE 1

Legrand PD-915R 9OUT15ARCKMNT POWER CEN 1

Legrand LBP-1R 10 PACK ROUND LACER BARS 1

Legrand UTR1 1SP UNIVERSAL HALF-RACK T 3

Installation Materials: \$820.01

Extron 60-583-11 CPM101 BLACK - 1 Gang Wall Plate 6

Extron 70-296-11 3-Pin Female XLR Insert 4

Extron 70-314-17 Cat6 RJ45 Female Punchdown Insert type 1 8

Extron 70-314-18 Cat6 RJ45 Female Punchdown Insert type 2 4

CTI Custom Blank Plates - Cover Existing Unused Plates 1

Courtroom 1B

Display Systems Equipment:

Samsung QE65T 65" Audience Display 1

Samsung QE43T 43" Jury Display 2

NEC NP-P605UL Projector: WUXGA LCD, Laser Light Source, 20,000 hours light source life, 6000 Lumen Entry Installation Projector - Lens Shift, HDBaseT, Dual HDMI, VGA, MultiPresenter, USB Viewer Capability, 21.4 lbs., 5 Year Warranty 1
OFE OFE OFE Draper 16:9, 106" Screen Fabric 1
Peerless PRG-UNV-W Projector Mount with Spider Universal Adapter Plate 1
Peerless SF660 Universal Flat Mount For 39" to 80" TV's 2
Peerless ACC912 43" Display Ceiling Plate 1
Peerless ACC640-W 43" Display Ceiling Ring 1
Peerless ADD1012 43" Display Pipe 1
Peerless PLCM-2-UNL 43" Display Ceiling Mount 1
NEC EA271U-BK 27" Judge Monitor - MultiSync EA271U-BK - 3 Year Warranty 1
NEC E221N-BK 23" Clerk Monitors - MultiSync E221N-BK 3 Year Warranty 4
Video Systems Equipment: \$6,360.18
AVPro Edge AC-MXNET-1G-D Decoder; HDMI, USB, IR, RS232, Fiber & RJ45 4
AVPro Edge AC-MXNET-1G-EWP MXNet 1G encoder in a standard dual-gang wall plate format making audio/video connection points look sleek and professional. 4
AVPro Edge AC-MXNET-CBOX Control Box for MXNET System 1
ELMO 1376 DOCUMENT CAMERA - PX-10E 1
Extron 60-1614-01 VGA TO HDMI SCALER: DVC RGB-HD A 1
Audio Systems Equipment:
QSC CORE 110F DSP: Unified Core with 24 local audio I/O channels, 128x128 total network I/O channels with 8x8 Software-based Dante license included, USB AV bridging, dual LAN ports, POTS and VoIP telephony, 16x16 GPIO, 16 next-generation AEC processors, 1RU. 1
QSC MP-A80V Amplifier: 1600W FlexAmp technology Hi-Z / Lo-Z amplifier, 8 x 200W into 4?, 8?, 70V and 100V, Highpass filter per channel, GPIO for Remote Standby and Amp Status. 1
Atlas FAP40T Ceiling Speaker: 4" In Ceiling Speaker with 16-Watt 70/100V Transformer and Ported Enclosure 9
Audix M3W6 Audix M3W6 - Audience Ceiling Microphone 3
Shure MX418D/C Gooseneck Microphone - Mute/Unmute 4
Listen LS-58-072 Assisted Listening - Transmitter, Antenna and Receiver Bundle 1
Listen LR-4200-072-P1 Assisted Listening receiver: Intelligent DSP RF Receiver Package 1 7 1
Control Systems Equipment: \$5,966.33

AMX FG2106-01 Control Processor: NX-1200 NetLinx NX Integrated Controller with 512 MB RAM, 1600 MIPS Processor, 4 UK of FLASH, 2 Serial Ports, 2 IR Ports, 4 I/O Ports, and IPv6 1
 AMX FG5969-53 Touch Panel: MT-702, 7" Modero G5 Tabletop Touch Panel 4
 AVPro Edge AC-MXNET-SW24 24-Port RJ45 switch (1G) w/ Intelligent AV Processing, 8 PoE ports 1
 Rack Accessories and Furniture: \$753.65

Legrand MFR-1227GE 12SP27D MOBILE F RACK GE 1
 Legrand PD-915R 9OUT15ARCKMNT POWER CEN 1
 Legrand LBP-1R 10 PACK ROUND LACER BARS 1
 Legrand UTR1 1SP UNIVERSAL HALF-RACK T 3

Installation Materials: \$683.19

Extron 60-583-11 CPM101 BLACK - 1 Gang Wall Plate 5
 Extron 70-296-11 3-Pin Female XLR Insert 4
 Extron 70-314-17 Cat6 RJ45 Female Punchdown Insert type 1 8
 Extron 70-314-18 Cat6 RJ45 Female Punchdown Insert type 2 2
 CTI Custom Blank Plates - Cover Existing Unused Plates 1

Jury Deliberation Room - Courtroom 1B

Display Systems Equipment:

Samsung QE43T 43" Deliberation Display 1
 Peerless SF660 43" Flat Wall Mount 1
 Peerless ACC-WMVCS Component Shelf for DVD player 1

Video Systems Equipment:

Sony DVPSR510H CD/DVD Blu-ray Player 1

Jury Assembly Room & Courtroom 1B Rack

Manufacturer P/N Description Qty

Rack Accessories and Furniture:

Legrand MRK-4431 44SP/31D MULTIBAY MRK 1
 Legrand MW-10FT-FC 10"(1)FAN/TOP W/FC M/W 1
 Legrand UPS-2200R 2200VA/1650W UPS 2
 Legrand LBP-1R 10 PACK ROUND LACER BARS 1
 Legrand PD-815RA-PL POWER CENTER W/ANOD FACE 2
 Legrand UTR1 1SP UNIVERSAL HALF-RACK T 6
 Legrand PDT-1015C-NS PD THIN1-15A CIR10 OUT 2

Courtroom 2A

Manufacturer P/N Description Qty

Display Systems Equipment:

Samsung QE65T 65" Audience Display 1
Samsung QE43T 43" Jury Display 2

NEC NP-P605UL Projector: WUXGA LCD, Laser Light Source, 20,000 hours light source life, 6000 Lumen Entry Installation Projector - Lens Shift, HDBaseT, Dual HDMI, VGA, MultiPresenter, USB Viewer Capability, 21.4 lbs., 5 Year Warranty 1
OFE OFE OFE Draper 16:9, 106" Screen Fabric 1
Peerless PRG-UNV-W Projector Mount with Spider Universal Adapter Plate 1
Peerless SF660 Universal Flat Mount For 39" to 80" TV's 2
Peerless ACC912 43" Display Ceiling Plate 1
Peerless ACC640-W 43" Display Ceiling Ring 1
Peerless ADD1012 43" Display Pipe 1
Peerless PLCM-2-UNL 43" Display Ceiling Mount 1
NEC EA271U-BK 27" Judge Monitor - MultiSync EA271U-BK - 3 Year Warranty 1
NEC E221N-BK 23" Clerk Monitors - MultiSync E221N-BK 3 Year Warranty 4
Video Systems Equipment: \$6,360.18
AVPro Edge AC-MXNET-1G-D Decoder; HDMI, USB, IR, RS232, Fiber & RJ45 4
AVPro Edge AC-MXNET-1G-EWP MXNet 1G encoder in a standard dual-gang wall plate format making audio/video connection points look sleek and professional. 4
AVPro Edge AC-MXNET-CBOX Control Box for MXNET System 1
ELMO 1376 DOCUMENT CAMERA - PX-10E 1
Extron 60-1614-01 VGA TO HDMI SCALER: DVC RGB-HD A 1

Audio Systems Equipment:

QSC CORE 1.1of DSP: Unified Core with 24 local audio I/O channels, 128x128 total network I/O channels with 8x8 Software-based Dante license included, USB AV bridging, dual LAN ports, POTS and VoIP telephony, 16x16 GPIO, 16 next-generation AEC processors, 1RU. 1
QSC MP-A80V Amplifier: 1600W FlexAmp technology Hi-Z / Lo-Z amplifier, 8 x 200W into 4?, 8?, 70V and 100V, Highpass filter per channel, GPIO for Remote Standby and Amp Status. 1
Atlas FAP40T Ceiling Speaker: 4" In Ceiling Speaker with 16-Watt 70/100V Transformer and Ported Enclosure 9
Audix M3W6 Audix M3W6 - Audience Ceiling Microphone 3
Shure MX418D/C Gooseneck Microphone - Mute/Unmute 4
Listen LS-58-072 Assisted Listening - Transmitter, Antenna and Receiver Bundle 1
Listen LR-4200-072-P1 Assisted Listening receiver: Intelligent DSP RF Receiver Package 1 7 1

Control Systems Equipment: \$5,966.33
AMX FG2106-01 Control Processor: NX-1200 NetLinX NX Integrated Controller with 512 MB RAM, 1600 MIPS Processor, 4 UK of FLASH, 2 Serial Ports, 2 IR Ports, 4 I/O Ports, and IPv6 1
AMX FG5969-53 Touch Panel: MT-702, 7" Modero G5 Tabletop Touch Panel 4
AVPro Edge AC-MXNET-SW24 24-Port RJ45 switch (1G) w/ Intelligent AV Processing, 8 PoE ports 1
Rack Accessories and Furniture: \$753.65

Legrand MFR-1227GE 12SP27D MOBILE F RACK GE 1
Legrand PD-915R 9OUT15ARCKMNT POWER CEN 1
Legrand LBP-1R 10 PACK ROUND LACER BARS 1
Legrand UTR1 1SP UNIVERSAL HALF-RACK T 3

Installation Materials: \$683.19

Extron 60-583-11 CPM101 BLACK - 1 Gang Wall Plate 5

Extron 70-296-11 3-Pin Female XLR Insert 4

Extron 70-314-17 Cat6 RJ45 Female Punchdown Insert type 1 8

Extron 70-314-18 Cat6 RJ45 Female Punchdown Insert type 2 2

CTI Custom Blank Plates - Cover Existing Unused Plates 1

Jury Deliberation Room - Courtroom 2A

Manufacturer P/N Description Qty

Display Systems Equipment:

Samsung QE43T 43" Deliberation Display 1

Peerless SF660 43" Flat Wall Mount 1

Peerless ACC-WMVCS Component Shelf for DVD player 1

Video Systems Equipment:

Sony DVPSR510H CD/DVD Blu-ray Player 1

Courtroom 2B

Display Systems Equipment:

Samsung QE65T 65" Audience Display 1

Samsung QE43T 43" Jury Display 2

NEC NP-P605UL Projector: WUXGA LCD, Laser Light Source, 20,000 hours light source life, 6000 Lumen Entry Installation Projector - Lens Shift, HDBaseT, Dual HDMI, VGA, MultiPresenter, USB Viewer Capability, 21.4 lbs., 5 Year Warranty 1
OFE OFE OFE Draper 16:9, 106" Screen Fabric 1

Peerless PRG-UNV-W Projector Mount with Spider Universal Adapter Plate 1
Peerless SF660 Universal Flat Mount For 39" to 80" TV's 2

Peerless ACC912 43" Display Ceiling Plate 1
Peerless ACC640-W 43" Display Ceiling Ring 1
Peerless ADD1012 43" Display Pipe 1
Peerless PLCM-2-UNL 43" Display Ceiling Mount 1
NEC EA271U-BK 27" Judge Monitor - MultiSync EA271U-BK - 3 Year Warranty 1
NEC E221N-BK 23" Clerk Monitors - MultiSync E221N-BK 3 Year Warranty 4
Video Systems Equipment:
AVPro Edge AC-MXNET-1G-D Decoder; HDMI, USB, IR, RS232, Fiber & RJ45 4
AVPro Edge AC-MXNET-1G-EWP MXNet 1G encoder in a standard dual-gang wall plate format making audio/video connection points look sleek and professional. 4
AVPro Edge AC-MXNET-CBOX Control Box for MXNET System 1
ELMO 1376 DOCUMENT CAMERA - PX-10E 1
Extron 60-1614-01 VGA TO HDMI SCALER: DVC RGB-HD A 1
Audio Systems Equipment:
QSC CORE 110f DSP: Unified Core with 24 local audio I/O channels, 128x128 total network I/O channels with 8x8 Software-based Dante license included, USB AV bridging, dual LAN ports, POTS and VoIP telephony, 16x16 GPIO, 16 next-generation AEC processors, 1RU. 1
QSC MP-A80V Amplifier: 1600W FlexAmp technology Hi-Z / Lo-Z amplifier, 8 x 200W into 4?, 8?, 70V and 100V, Highpass filter per channel, GPIO for Remote Standby and Amp Status. 1
Atlas FAP40T Ceiling Speaker: 4" In Ceiling Speaker with 16-Watt 70/100V Transformer and Ported Enclosure 9
Audix M3W6 Audix M3W6 - Audience Ceiling Microphone 3
Shure MX418D/C Gooseneck Microphone - Mute/Unmute 4
Listen LS-58-072 Assisted Listening - Transmitter, Antenna and Receiver Bundle 1
Listen LR-4200-072-P1 Assisted Listening receiver: Intelligent DSP RF Receiver Package 1 7 1
Control Systems Equipment:
AMX FG2106-01 Control Processor: NX-1200 NetLinx NX Integrated Controller with 512 MB RAM, 1600 MIPS Processor, 4 UK of FLASH, 2 Serial Ports, 2 IR Ports, 4 I/O Ports, and IPv6 1
AMX FG5969-53 Touch Panel: MT-702, 7" Modero G5 Tabletop Touch Panel 4
AVPro Edge AC-MXNET-SW24 24-Port RJ45 switch (1G) w/ Intelligent AV Processing, 8 PoE ports 1
Rack Accessories and Furniture:
Legrand MFR-1227GE 12SP27D MOBILE F RACK GE 1
Legrand PD-915R 9OUT15ARCKMNT POWER CEN 1
Legrand LBP-1R 10 PACK ROUND LACER BARS 1

Legrand UTR1 1SP UNIVERSAL HALF-RACK T 3

Installation Materials:

- Extron 60-583-11 CPM101 BLACK - 1 Gang Wall Plate 5
- Extron 70-296-11 3-Pin Female XLR Insert 4
- Extron 70-314-17 Cat6 RJ45 Female Punchdown Insert type 1 8
- Extron 70-314-18 Cat6 RJ45 Female Punchdown Insert type 2 2
- CTI Custom Blank Plates - Cover Existing Unused Plates 1

Jury Deliberation Room - Courtroom 2B

Display Systems Equipment:

- Samsung QE43T 43" Deliberation Display 1
- Peerless SF660 43" Flat Wall Mount 1
- Peerless ACC-WMVCS Component Shelf for DVD player 1
- Video Systems Equipment:
- Sony DVPSR510H CD/DVD Blu-ray Player 1

Courtroom 2A & Courtroom 2B Rack

Rack Accessories and Furniture:

- Legrand MRK-4431 44SP/31D MULTIBAY MRK 1
- Legrand MW-10FT-FC 10"(1)FAN/TOP W/FC M/W 1
- Legrand LBP-1R 10 PACK ROUND LACER BARS 1
- Legrand UPS-2200R 2200VA/1650W UPS 2
- Legrand UTR1 1SP UNIVERSAL HALF-RACK T 6
- Legrand PD-815RA-PL POWER CENTER W/ANOD FACE 2
- Legrand PDT-1015C-NS PD THIN1-15A CIR10 OUT 2

Courtroom 2C

Display Systems Equipment:

- Samsung QE65T 65" Audience Display 1
- Samsung QE43T 43" Jury Display 2

- NEC NP-P605UL Projector: WUXGA LCD, Laser Light Source, 20,000 hours light source life, 6000 Lumen Entry Installation Projector - Lens Shift, HDBaseT, Dual HDMI, VGA, MultiPresenter, USB Viewer Capability, 21.4 lbs., 5 Year Warranty 1
- OFE OFE Draper 16:9, 106" Screen Fabric 1
- Peerless PRG-UNV-W Projector Mount with Spider Universal Adapter Plate 1
- Peerless SF660 Universal Flat Mount For 39" to 80" TV's 2
- Peerless ACC912 43" Display Ceiling Plate 1

Peerless ACC640-W 43" Display Ceiling Ring 1
Peerless ADD1012 43" Display Pipe 1
Peerless PLCM-2-UNL 43" Display Ceiling Mount 1
NEC EA271U-BK 27" Judge Monitor - MultiSync EA271U-BK - 3 Year Warranty 1
NEC E221N-BK 23" Clerk Monitors - MultiSync E221N-BK 3 Year Warranty 4
Video Systems Equipment: \$6,360.18
AVPro Edge AC-MXNET-1G-D Decoder; HDMI, USB, IR, RS232, Fiber & RJ45 4
AVPro Edge AC-MXNET-1G-EWP MXNet 1G encoder in a standard dual-gang wall plate format making audio/video connection points look sleek and professional. 4
AVPro Edge AC-MXNET-CBOX Control Box for MXNET System 1
ELMO 1376 DOCUMENT CAMERA - PX-10E 1
Extron 60-1614-01 VGA TO HDMI SCALER: DVC RGB-HD A 1
Audio Systems Equipment:
QSC CORE 110f DSP: Unified Core with 24 local audio I/O channels, 128x128 total network I/O channels with 8x8 Software-based Dante license included, USB AV bridging, dual LAN ports, POTS and VoIP telephony, 16x16 GPIO, 16 next-generation AEC processors, 1RU. 1
QSC MP-A80V Amplifier: 1600W FlexAmp technology Hi-Z / Lo-Z amplifier, 8 x 200W into 4?, 8?, 70V and 100V, Highpass filter per channel, GPIO for Remote Standby and Amp Status. 1
Atlas FAP40T Ceiling Speaker: 4" In Ceiling Speaker with 16-Watt 70/100V Transformer and Ported Enclosure 9
Audix M3W6 Audix M3W6 - Audience Ceiling Microphone 3
Shure MX418D/C Gooseneck Microphone - Mute/Unmute 4
Listen LS-58-072 Assisted Listening - Transmitter, Antenna and Receiver Bundle 1
Listen LR-4200-072-P1 Assisted Listening receiver: Intelligent DSP RF Receiver Package 1 7 1
Control Systems Equipment:
AMX FG2106-01 Control Processor: NX-1200 NetLinX NX Integrated Controller with 512 MB RAM, 1600 MIPS Processor, 4 UK of FLASH, 2 Serial Ports, 2 IR Ports, 4 I/O Ports, and IPv6 1
AMX FG5969-53 Touch Panel: MT-702, 7" Modero G5 Tabletop Touch Panel 4
AVPro Edge AC-MXNET-SW24 24-Port RJ45 switch (1G) w/ Intelligent AV Processing, 8 PoE ports 1
Rack Accessories and Furniture:
Legrand MFR-1227GE 12SP27D MOBILE F RACK GE 1
Legrand PD-915R 9OUT15ARCKMNT POWER CEN 1
Legrand LBP-1R 10 PACK ROUND LACER BARS 1
Legrand UTR1 1SP UNIVERSAL HALF-RACK T 3

Installation Materials:

- Extron 60-583-11 CPM101 BLACK - 1 Gang Wall Plate 5
- Extron 70-296-11 3-Pin Female XLR Insert 4
- Extron 70-314-17 Cat6 RJ45 Female Punchdown Insert type 1 8
- Extron 70-314-18 Cat6 RJ45 Female Punchdown Insert type 2 2
- CTI Custom Blank Plates - Cover Existing Unused Plates 1

Jury Deliberation Room - Courtroom 2C

Manufacturer P/N Description Qty

Display Systems Equipment:

- Samsung QE43T 43" Deliberation Display 1
- Peerless SF660 43" Flat Wall Mount 1
- Peerless ACC-WMVCS Component Shelf for DVD player 1

Video Systems Equipment:

- Sony DVPSR510H CD/DVD Blu-ray Player 1

Courtroom 2D

Display Systems Equipment:

- Samsung QE65T 65" Audience Display 1
- Samsung QE43T 43" Jury Display 2

NEC NP-P605UL Projector: WUXGA LCD, Laser Light Source, 20,000 hours light source life, 6000 Lumen Entry Installation Projector - Lens Shift, HDBaseT, Dual HDMI, VGA, MultiPresenter, USB Viewer Capability, 21.4 lbs., 5 Year Warranty 1

OFE OFE OFE Draper 16:9, 106" Screen Fabric 1

Peerless PRG-UNV-W Projector Mount with Spider Universal Adapter Plate 1

Peerless SF660 Universal Flat Mount For 39" to 80" TV's 2

Peerless ACC912 43" Display Ceiling Plate 1

Peerless ACC640-W 43" Display Ceiling Ring 1

Peerless ADD1012 43" Display Pipe 1

Peerless PLCM-2-UNL 43" Display Ceiling Mount 1

NEC EA271U-BK 27" Judge Monitor - MultiSync EA271U-BK - 3 Year Warranty 1

NEC E221N-BK 23" Clerk Monitors - MultiSync E221N-BK 3 Year Warranty 4

Video Systems Equipment:

AVPro Edge AC-MXNET-1G-D Decoder; HDMI, USB, IR, RS232, Fiber & RJ45 4

AVPro Edge AC-MXNET-1G-EWP MXNet 1G encoder in a standard dual-gang wall plate format making audio/video connection points look sleek and professional. 4

AVPro Edge AC-MXNET-CBOX Control Box for MXNET System 1

ELMO 1376 DOCUMENT CAMERA - PX-10E 1

Extron 60-1614-01 VGA TO HDMI SCALER: DVC RGB-HD A 1

Audio Systems Equipment:

QSC CORE 110f DSP: Unified Core with 24 local audio I/O channels, 128x128 total network I/O channels with 8x8 Software-based Dante license included, USB AV bridging, dual LAN ports, POTS and VoIP telephony, 16x16 GPIO, 16 next-generation AEC processors, 1RU. 1

QSC MP-A80V Amplifier: 1600W FlexAmp technology Hi-Z / Lo-Z amplifier, 8 x 200W into 4?, 8?, 70V and 100V, Highpass filter per channel, GPIO for Remote Standby and Amp Status. 1

Atlas FAP40T Ceiling Speaker: 4" In Ceiling Speaker with 16-Watt 70/100V Transformer and Ported Enclosure 9

Audix M3W6 Audix M3W6 - Audience Ceiling Microphone 3

Shure MX418D/C Gooseneck Microphone - Mute/Unmute 4

Listen LS-58-072 Assisted Listening - Transmitter, Antenna and Receiver Bundle 1

Listen LR-4200-072-P1 Assisted Listening receiver: Intelligent DSP RF Receiver Package 1 7 1

Control Systems Equipment:

AMX FG2106-01 Control Processor: NX-1200 NetLinX NX Integrated Controller with 512 MB RAM, 1600 MIPS Processor, 4 UK of FLASH, 2 Serial Ports, 2 IR Ports, 4 I/O Ports, and IPv6 1

AMX FG5969-53 Touch Panel: MT-702, 7" Modero G5 Tabletop Touch Panel 4

AVPro Edge AC-MXNET-SW24 24-Port RJ45 switch (1G) w/ Intelligent AV Processing, 8 PoE ports 1

Rack Accessories and Furniture:

Legrand MFR-1227GE 12SP27D MOBILE F RACK GE 1

Legrand PD-915R 9OUT15ARCKMNT POWER CEN 1

Legrand LBP-1R 10 PACK ROUND LACER BARS 1

Legrand UTR1 1SP UNIVERSAL HALF-RACK T 3

Installation Materials:

Extron 60-583-11 CPM101 BLACK - 1 Gang Wall Plate 5

Extron 70-296-11 3-Pin Female XLR Insert 4

Extron 70-314-17 Cat6 RJ45 Female Punchdown Insert type 1 8

Extron 70-314-18 Cat6 RJ45 Female Punchdown Insert type 2 2

CTI Custom Blank Plates - Cover Existing Unused Plates 1

Jury Deliberation Room - Courtroom 2D

Display Systems Equipment:

- Samsung QE43T 43" Deliberation Display 1
- Peerless SF660 43" Flat Wall Mount 1
- Peerless ACC-WMVCS Component Shelf for DVD player 1

Video Systems Equipment:

- Sony DVPSR510H CD/DVD Blu-ray Player 1

Courtroom 2C & Courtroom 2D Rack

Rack Accessories and Furniture:

- Legrand MRK-4431 44SP/31D MULTIBAY MRK 1
- Legrand MW-10FT-FC 10"(1)FAN/TOP W/FC M/W 1
- Legrand UPS-2200R 2200VA/1650W UPS 2
- Legrand LBP-1R 10 PACK ROUND LACER BARS 1
- Legrand UTR1 1SP UNIVERSAL HALF-RACK T 6
- Legrand PD-815RA-PL POWER CENTER W/ANOD FACE 2
- Legrand PDT-1015C-NS PD THIN1-15A CIR10 OUT 2

Courtroom 3A

Display Systems Equipment:

- Samsung QE65T 65" Audience Display 1
- Samsung QE43T 43" Jury Display 2

NEC NP-P605UL Projector: WUXGA LCD, Laser Light Source, 20,000 hours light source life, 6000 Lumen Entry Installation Projector - Lens Shift, HDBaseT, Dual HDMI, VGA, MultiPresenter, USB Viewer Capability, 21.4 lbs., 5 Year Warranty 1
OFE OFE OFE Draper 16:9, 106" Screen Fabric 1

Peerless PRG-UNV-W Projector Mount with Spider Universal Adapter Plate 1

Peerless SF660 Universal Flat Mount For 39" to 80" TV's 2

Peerless ACC912 43" Display Ceiling Plate 1

Peerless ACC640-W 43" Display Ceiling Ring 1

Peerless ADD1012 43" Display Pipe 1

Peerless PLCM-2-UNL 43" Display Ceiling Mount 1

NEC EA271U-BK 27" Judge Monitor - MultiSync EA271U-BK - 3 Year Warranty 1

NEC E221N-BK 23" Clerk Monitors - MultiSync E221N-BK 3 Year Warranty 4

Video Systems Equipment:

AVPro Edge AC-MXNET-1G-D Decoder; HDMI, USB, IR, RS232, Fiber & RJ45 4
AVPro Edge AC-MXNET-1G-EWP MXNet 1G encoder in a standard dual-gang wall plate format making audio/video connection points look sleek and professional. 4
AVPro Edge AC-MXNET-CBOX Control Box for MXNET System 1
ELMO 1376 DOCUMENT CAMERA - PX-10E 1
Extron 60-1614-01 VGA TO HDMI SCALER: DVC RGB-HD A 1

Audio Systems Equipment:

QSC CORE 110f DSP: Unified Core with 24 local audio I/O channels, 128x128 total network I/O channels with 8x8 Software-based Dante 1
license included, USB AV bridging, dual LAN ports, POTS and VoIP telephony, 16x16 GPIO, 16 next-generation AEC processors, 1RU.
QSC MP-A80V Amplifier: 1600W FlexAmp technology Hi-Z / Lo-Z amplifier, 8 x 200W into 4?, 8?, 70V and 100V, Highpass filter per channel, GPIO for Remote Standby and Amp Status. 1

Atlas FAP40T Ceiling Speaker: 4" In Ceiling Speaker with 16-Watt 70/100V Transformer and Ported Enclosure 9
Audix M3W6 Audix M3W6 - Audience Ceiling Microphone 3

Shure MX418D/C Gooseneck Microphone - Mute/Unmute 4

Listen LS-58-072 Assisted Listening - Transmitter, Antenna and Receiver Bundle 1

Listen LR-4200-072-P1 Assisted Listening receiver: Intelligent DSP RF Receiver Package 1 7 1

Control Systems Equipment:

AMX FG2106-01 Control Processor: NX-1200 NetLinX NX Integrated Controller with 512 MB RAM, 1600 MIPS Processor, 4 UK of FLASH, 2 Serial Ports, 2 IR Ports, 4 I/O Ports, and IPv6 1

AMX FG5969-53 Touch Panel: MT-702, 7" Modero G5 Tabletop Touch Panel 4

AVPro Edge AC-MXNET-SW24 24-Port RJ45 switch (1G) w/ Intelligent AV Processing, 8 PoE ports 1
Rack Accessories and Furniture:

Legrand MFR-1227GE 12SP27D MOBILE F RACK GE 1

Legrand PD-915R 9OUT15ARCKMNT POWER CEN 1

Legrand LBP-1R 10 PACK ROUND LACER BARS 1

Legrand UTR1 1SP UNIVERSAL HALF-RACK T 3

Installation Materials:

Extron 60-583-11 CPM101 BLACK - 1 Gang Wall Plate 5

Extron 70-296-11 3-Pin Female XLR Insert 4

Extron 70-314-17 Cat6 RJ45 Female Punchdown Insert type 1 8

Extron 70-314-18 Cat6 RJ45 Female Punchdown Insert type 2 2
CTI Custom Blank Plates - Cover Existing Unused Plates 1
Jury Deliberation Room - Courtroom 3A

Display Systems Equipment:

Samsung QE43T 43" Deliberation Display 1
Peerless SF660 43" Flat Wall Mount 1
Peerless ACC-WMVCS Component Shelf for DVD player 1

Video Systems Equipment:

Sony DVPSR510H CD/DVD Blu-ray Player 1

Courtroom 3B

Display Systems Equipment:

Samsung QE65T 65" Audience Display 1
Samsung QE43T 43" Jury Display 2

NEC NP-P605UL Projector: WUXGA LCD, Laser Light Source, 20,000 hours light source life, 6000 Lumen Entry Installation Projector - Lens Shift, HDBaseT, Dual HDMI, VGA, MultiPresenter, USB Viewer Capability, 21.4 lbs., 5 Year Warranty 1

OFE OFE OFE Draper 16:9, 106" Screen Fabric 1

Peerless PRG-UNV-W Projector Mount with Spider Universal Adapter Plate 1

Peerless SF660 Universal Flat Mount For 39" to 80" TV's 2

Peerless ACC912 43" Display Ceiling Plate 1

Peerless ACC640-W 43" Display Ceiling Ring 1

Peerless ADD1012 43" Display Pipe 1

Peerless PLCM-2-UNL 43" Display Ceiling Mount 1

NEC EA271U-BK 27" Judge Monitor - MultiSync EA271U-BK - 3 Year Warranty 1

NEC E221N-BK 23" Clerk Monitors - MultiSync E221N-BK 3 Year Warranty 4

Video Systems Equipment:

AVPro Edge AC-MXNET-1G-D Decoder; HDMI, USB, IR, RS232, Fiber & RJ45 4

AVPro Edge AC-MXNET-1G-EWP MXNet 1G encoder in a standard dual-gang wall plate format making audio/video connection points look sleek and professional. 4

AVPro Edge AC-MXNET-CBOX Control Box for MXNET System 1

ELMO 1376 DOCUMENT CAMERA - PX-10E 1

Extron 60-1614-01 VGA TO HDMI SCALER: DVC RGB-HD A 1

Audio Systems Equipment: \$9,746.55

QSC CORE 110f DSP: Unified Core with 24 local audio I/O channels, 128x128 total network I/O channels with 8x8 Software-based Dante 1 license included, USB AV bridging, dual LAN ports, POTS and VoIP telephony, 16x16 GPIO, 16 next-generation AEC processors, 1RU. QSC MP-A80V Amplifier: 1600W FlexAmp technology Hi-Z / Lo-Z amplifier, 8 x 200W into 4?, 8?, 70V and 100V, Highpass filter per channel, GPIO for Remote Standby and Amp Status. 1

Atlas FAP40T Ceiling Speaker: 4" In Ceiling Speaker with 16-Watt 70/100V Transformer and Ported Enclosure 9
Audix M3W6 Audix M3W6 - Audience Ceiling Microphone 3
Shure MX418D/C Gooseneck Microphone - Mute/Unmute 4
Listen LS-58-072 Assisted Listening - Transmitter, Antenna and Receiver Bundle 1
Listen LR-4200-072-P1 Assisted Listening receiver: Intelligent DSP RF Receiver Package 1 7 1
Control Systems Equipment:

AMX FG2106-01 Control Processor: NX-1200 NetLinx NX Integrated Controller with 512 MB RAM, 1600 MIPS Processor, 4 UK of FLASH, 2 Serial Ports, 2 IR Ports, 4 I/O Ports, and IPv6 1

AMX FG5969-53 Touch Panel: MT-702, 7" Modero G5 Tabletop Touch Panel 4
AVPro Edge AC-MXNET-SW24 24-Port RJ45 switch (1G) w/ Intelligent AV Processing, 8 PoE ports 1
Rack Accessories and Furniture:

Legrand MFR-1227GE 12SP27D MOBILE F RACK GE 1
Legrand PD-915R 9OUT15ARCKMNT POWER CEN 1
Legrand LBP-1R 10 PACK ROUND LACER BARS 1
Legrand UTR1 1SP UNIVERSAL HALF-RACK T 3

Installation Materials:

Extron 60-583-11 CPM101 BLACK - 1 Gang Wall Plate 5
Extron 70-296-11 3-Pin Female XLR Insert 4
Extron 70-314-17 Cat6 RJ45 Female Punchdown Insert type 1 8
Extron 70-314-18 Cat6 RJ45 Female Punchdown Insert type 2 2
CTI Custom Blank Plates - Cover Existing Unused Plates 1

Jury Deliberation Room - Courtroom 3B
Manufacturer P/N Description Qty

Display Systems Equipment:
Samsung QE43T 43" Deliberation Display 1
Peerless SF660 43" Flat Wall Mount 1
Peerless ACC-WMVCS Component Shelf for DVD player 1

Video Systems Equipment:

Sony DVPSR510H CD/DVD Blu-ray Player 1

Courtroom 3A & Courtroom 3B Rack

Manufacturer P/N Description Qty

Rack Accessories and Furniture:

Legrand MRK-4431 44SP/31D MULTIBAY MRK 1

Legrand MW-10FT-FC 10"(1)FAN/TOP W/FC M/W 1

Legrand UPS-2200R 2200VA/1650W UPS 2

Legrand LBP-1R 10 PACK ROUND LACER BARS 1

Legrand UTR1 1SP UNIVERSAL HALF-RACK T 6

Legrand PD-815RA-PL POWER CENTER W/ANOD FACE 2

Legrand PDT-1015C-NS PD THIN1-15A CIR10 OUT 2

Courtroom 3C

Display Systems Equipment:

Samsung QE65T 65" Audience Display 1

Samsung QE43T 43" Jury Display 2

NEC NP-P605UL Projector: WUXGA LCD, Laser Light Source, 20,000 hours light source life, 6000 Lumen Entry Installation Projector - Lens Shift, HDBaseT, Dual HDMI, VGA, MultiPresenter, USB Viewer Capability, 21.4 lbs., 5 Year Warranty 1

OFE OFE OFE Draper 16:9, 106" Screen Fabric 1

Peerless PRG-UNV-W Projector Mount with Spider Universal Adapter Plate 1

Peerless SF660 Universal Flat Mount For 39" to 80" TV's 2

Peerless ACC912 43" Display Ceiling Plate 1

Peerless ACC640-W 43" Display Ceiling Ring 1

Peerless ADD1012 43" Display Pipe 1

Peerless PLCM-2-UNL 43" Display Ceiling Mount 1

NEC EA271U-BK 27" Judge Monitor - MultiSync EA271U-BK - 3 Year Warranty 1

NEC E221N-BK 23" Clerk Monitors - MultiSync E221N-BK 3 Year Warranty 4

Video Systems Equipment:

AVPro Edge AC-MXNET-1G-D Decoder; HDMI, USB, IR, RS232, Fiber & RJ45 4

AVPro Edge AC-MXNET-1G-EWP MXNet 1G encoder in a standard dual-gang wall plate format making audio/video connection points look sleek and professional. 4

AVPro Edge AC-MXNET-CBOX Control Box for MXNET System 1

ELMO 1376 DOCUMENT CAMERA - PX-10E 1

Extron 60-1614-01 VGA TO HDMI SCALER: DVC RGB-HD A 1

Audio Systems Equipment:

QSC CORE 110f DSP: Unified Core with 24 local audio I/O channels, 128x128 total network I/O channels with 8x8 Software-based Dante license included, USB AV bridging, dual LAN ports, POTS and VoIP telephony, 16x16 GPIO, 16 next-generation AEC processors, 1RU. 1
QSC MP-A80V Amplifier: 1600W FlexAmp technology Hi-Z / Lo-Z amplifier, 8 x 200W into 4?, 8?, 70V and 100V, Highpass filter per channel, GPIO for Remote Standby and Amp Status. 1

Atlas FAP40T Ceiling Speaker: 4" In Ceiling Speaker with 16-Watt 70/100V Transformer and Ported Enclosure 9

Audix M3W6 Audix M3W6 - Audience Ceiling Microphone 3

Shure MX418D/C Gooseneck Microphone - Mute/Unmute 4

Listen LS-58-072 Assisted Listening - Transmitter, Antenna and Receiver Bundle 1

Listen LR-4200-072-P1 Assisted Listening receiver: Intelligent DSP RF Receiver Package 1 7 1

Control Systems Equipment:

AMX FG2106-01 Control Processor: NX-1200 NetLinx NX Integrated Controller with 512 MB RAM, 1600 MIPS Processor, 4 UK of FLASH, 2 Serial Ports, 2 IR Ports, 4 I/O Ports, and IPv6 1

AMX FG5969-53 Touch Panel: MT-702, 7" Modero G5 Tabletop Touch Panel 4

AVPro Edge AC-MXNET-SW24 24-Port RJ45 switch (1G) w/ Intelligent AV Processing, 8 PoE ports 1

Rack Accessories and Furniture:

Legrand MFR-1227GE 12SP27D MOBILE F RACK GE 1

Legrand PD-915R 9OUT15ARCKMNT POWER CEN 1

Legrand LBP-1R 10 PACK ROUND LACER BARS 1

Legrand UTR1 1SP UNIVERSAL HALF-RACK T 3

Installation Materials:

Extron 60-583-11 CPM101 BLACK - 1 Gang Wall Plate 5

Extron 70-296-11 3-Pin Female XLR Insert 4

Extron 70-314-17 Cat6 RJ45 Female Punchdown Insert type 1 8

Extron 70-314-18 Cat6 RJ45 Female Punchdown Insert type 2 2

CTI Custom Blank Plates - Cover Existing Unused Plates 1

Jury Deliberation Room - Courtroom 3C

Display Systems Equipment:

Samsung QE43T 43" Deliberation Display 1

Peerless SF660 43" Flat Wall Mount 1
Peerless ACC-WMVCS Component Shelf for DVD player 1

Video Systems Equipment:

Sony DVPSR510H CD/DVD Blu-ray Player 1

Courtroom 3D

Display Systems Equipment:

Samsung QE65T 65" Audience Display 1

Samsung QE43T 43" Jury Display 2

NEC NP-P605UL Projector: WUXGA LCD, Laser Light Source, 20,000 hours light source life, 6000 Lumen Entry Installation Projector - Lens Shift, HDBaseT, Dual HDMI, VGA, MultiPresenter, USB Viewer Capability, 21.4 lbs., 5 Year Warranty 1
OFE OFE OFE Draper 16:9, 106" Screen Fabric 1

Peerless PRG-UNV-W Projector Mount with Spider Universal Adapter Plate 1

Peerless SF660 Universal Flat Mount For 39" to 80" TV's 2

Peerless ACC912 43" Display Ceiling Plate 1

Peerless ACC640-W 43" Display Ceiling Ring 1

Peerless ADD1012 43" Display Pipe 1

Peerless PLCM-2-UNL 43" Display Ceiling Mount 1

NEC EA271U-BK 27" Judge Monitor - MultiSync EA271U-BK - 3 Year Warranty 1

NEC E221N-BK 23" Clerk Monitors - MultiSync E221N-BK 3 Year Warranty 4

Video Systems Equipment:

AVPro Edge AC-MXNET-1G-D Decoder; HDMI, USB, IR, RS232, Fiber & RJ45 4

AVPro Edge AC-MXNET-1G-EWP MXNet 1G encoder in a standard dual-gang wall plate format making audio/video connection points look sleek and professional. 4

AVPro Edge AC-MXNET-CBOX Control Box for MXNET System 1

ELMO 1376 DOCUMENT CAMERA - PX-10E 1

Extron 60-1614-01 VGA TO HDMI SCALER: DVC RGB-HD A 1

Audio Systems Equipment:

QSC CORE 110f DSP: Unified Core with 24 local audio I/O channels, 128x128 total network I/O channels with 8x8 Software-based Dante license included, USB AV bridging, dual LAN ports, POTS and VoIP telephony, 16x16 GPIO, 16 next-generation AEC processors, 1RU. 1

QSC MP-A80V Amplifier: 1600W FlexAmp technology Hi-Z / Lo-Z amplifier, 8 x 200W into 4?, 8?, 70V and 100V, Highpass filter per channel, GPIO for Remote Standby and Amp Status. 1

Atlas FAP40T Ceiling Speaker: 4" In Ceiling Speaker with 16-Watt 70/100V Transformer and Ported Enclosure 9
Audix M3W6 Audix M3W6 - Audience Ceiling Microphone 3
Shure MX418D/C Gooseneck Microphone - Mute/Unmute 4
Listen LS-58-072 Assisted Listening - Transmitter, Antenna and Receiver Bundle 1
Listen LR-4200-072-P1 Assisted Listening receiver: Intelligent DSP RF Receiver Package 1 7 1
Control Systems Equipment:
AMX FG2106-01 Control Processor: NX-1200 NetLinX NX Integrated Controller with 512 MB RAM, 1600 MIPS Processor, 4 UK of FLASH, 2 Serial Ports, 2 IR Ports, 4 I/O Ports, and IPv6 1
AMX FG5969-53 Touch Panel: MT-702, 7" Modero G5 Tabletop Touch Panel 4
AVPro Edge AC-MXNET-SW24 24-Port RJ45 switch (1G) w/ Intelligent AV Processing, 8 PoE ports 1
Rack Accessories and Furniture:

Legrand MFR-1227GE 12SP27D MOBILE F RACK GE 1
Legrand PD-915R 90OUT15ARCKMNT POWER CEN 1
Legrand LBP-1R 10 PACK ROUND LACER BARS 1
Legrand UTR1 1SP UNIVERSAL HALF-RACK T 3
Installation Materials: \$683.19
Extron 60-583-11 CPM101 BLACK - 1 Gang Wall Plate 5
Extron 70-296-11 3-Pin Female XLR Insert 4
Extron 70-314-17 Cat6 RJ45 Female Punchdown Insert type 1 8
Extron 70-314-18 Cat6 RJ45 Female Punchdown Insert type 2 2
CTI Custom Blank Plates - Cover Existing Unused Plates 1

Jury Deliberation Room - Courtroom 3D

Display Systems Equipment:

Samsung QE43T 43" Deliberation Display 1
Peerless SF660 43" Flat Wall Mount 1
Peerless ACC-WMVCS Component Shelf for DVD player 1

Video Systems Equipment:

Sony DVPSR510H CD/DVD Blu-ray Player 1

Courtroom 3C & Courtroom 3D Rack

Rack Accessories and Furniture:
Legrand MRK-4431 44SP/31D MULTIBAY MRK 1
Legrand MW-10FT-FC 10"(1)FAN/TOP W/FC M/W 1

Legrand LBP-1R 10 PACK ROUND LACER BARS 1
Legrand UPS-2200R 2200VA/1650W UPS 2
Legrand PD-815RA-PL POWER CENTER W/ANOD FACE 2
Legrand UTR1 1SP UNIVERSAL HALF-RACK T 6
Legrand PDT-1015C-NS PD THIN1-15A CIR10 OUT 2
Courtroom 4A

Display Systems Equipment:

Samsung QE65T 65" Audience Display 1
Samsung QE43T 43" Jury Display 2

NEC NP-P605UL Projector: WUXGA LCD, Laser Light Source, 20,000 hours light source life, 6000 Lumen Entry Installation Projector - Lens Shift, HDBaseT, Dual HDMI, VGA, MultiPresenter, USB Viewer Capability, 21.4 lbs., 5 Year Warranty 1
OFE OFE OFE Draper 16:9, 106" Screen Fabric 1
Peerless PRG-UNV-W Projector Mount with Spider Universal Adapter Plate 1
Peerless SF660 Universal Flat Mount For 39" to 80" TV's 2
Peerless ACC912 43" Display Ceiling Plate 1
Peerless ACC640-W 43" Display Ceiling Ring 1
Peerless ADD1012 43" Display Pipe 1
Peerless PLCM-2-UNL 43" Display Ceiling Mount 1
NEC EA271U-BK 27" Judge Monitor - MultiSync EA271U-BK - 3 Year Warranty 1
NEC E221N-BK 23" Clerk Monitors - MultiSync E221N-BK 3 Year Warranty 4

Video Systems Equipment:

AVPro Edge AC-MXNET-1G-D Decoder; HDMI, USB, IR, RS232, Fiber & RJ45 4
AVPro Edge AC-MXNET-1G-EWP MXNet 1G encoder in a standard dual-gang wall plate format making audio/video connection points look sleek and professional. 4
AVPro Edge AC-MXNET-CBOX Control Box for MXNET System 1
ELMO 1376 DOCUMENT CAMERA - PX-10E 1
Extron 60-1614-01 VGA TO HDMI SCALER: DVC RGB-HD A 1
Audio Systems Equipment:

QSC CORE 110f DSP: Unified Core with 24 local audio I/O channels, 128x128 total network I/O channels with 8x8 Software-based Dante license included, USB AV bridging, dual LAN ports, PoTS and VoIP telephony, 16x16 GPIO, 16 next-generation AEC processors, 1RU. 1

QSC MP-A80V Amplifier: 1600W FlexAmp technology Hi-Z / Lo-Z amplifier, 8 x 200W into 4?, 8?, 70V and 100V, Highpass filter per channel, GPIO for Remote Standby and Amp Status. 1

Atlas FAP40T Ceiling Speaker: 4" In Ceiling Speaker with 16-Watt 70/100V Transformer and Ported Enclosure 9

Audix M3W6 Audix M3W6 - Audience Ceiling Microphone 3

Shure MX418D/C Gooseneck Microphone - Mute/Unmute 4

Listen LS-58-072 Assisted Listening - Transmitter, Antenna and Receiver Bundle 1

Listen LR-4200-072-P1 Assisted Listening receiver: Intelligent DSP RF Receiver Package 1 7 1

Control Systems Equipment:

AMX FG2106-01 Control Processor: NX-1200 NetLinX NX Integrated Controller with 512 MB RAM, 1600 MIPS Processor, 4 UK of FLASH, 2 Serial Ports, 2 IR Ports, 4 I/O Ports, and IPV6 1

AMX FG5969-53 Touch Panel: MT-702, 7" Modero G5 Tabletop Touch Panel 4

AVPro Edge AC-MXNET-SW24 24-Port RJ45 switch (1G) w/ Intelligent AV Processing, 8 PoE ports 1

Rack Accessories and Furniture:

Legrand MFR-1227GE 12SP27D MOBILE F RACK GE 1

Legrand PD-915R 9OUT15ARCKMNT POWER CEN 1

Legrand LBP-1R 10 PACK ROUND LACER BARS 1

Legrand UTR1 1SP UNIVERSAL HALF-RACK T 3

Installation Materials:

Extron 60-583-11 CPM101 BLACK - 1 Gang Wall Plate 5

Extron 70-296-11 3-Pin Female XLR Insert 4

Extron 70-314-17 Cat6 RJ45 Female Punchdown Insert type 1 8

Extron 70-314-18 Cat6 RJ45 Female Punchdown Insert type 2 2

CTI Custom Blank Plates - Cover Existing Unused Plates 1

Jury Deliberation Room - Courtroom 4A

Manufacturer P/N Description Qty

Display Systems Equipment:

Samsung QE43T 43" Deliberation Display 1

Peerless SF660 43" Flat Wall Mount 1

Peerless ACC-WMVCS Component Shelf for DVD player 1

Video Systems Equipment:

Sony DVPSR510H CD/DVD Blu-ray Player 1

Courtroom 4B

Display Systems Equipment:

Samsung QE65T 65" Audience Display 1

Samsung QE43T 43" Jury Display 2

NEC NP-P605UL Projector: WUXGA LCD, Laser Light Source, 20,000 hours light source life, 6000 Lumen Entry Installation Projector - Lens Shift, HDBaseT, Dual HDMI, VGA, MultiPresenter, USB Viewer Capability, 21.4 lbs., 5 Year Warranty 1

OFE OFE OFE Draper 16:9, 106" Screen Fabric 1

Peerless PRG-UNV-W Projector Mount with Spider Universal Adapter Plate 1

Peerless SF660 Universal Flat Mount For 39" to 80" TV's 2

Peerless ACC912 43" Display Ceiling Plate 1

Peerless ACC640-W 43" Display Ceiling Ring 1

Peerless ADD1012 43" Display Pipe 1

Peerless PLCM-2-UNL 43" Display Ceiling Mount 1

NEC EA271U-BK 27" Judge Monitor - MultiSync EA271U-BK - 3 Year Warranty 1

NEC E221N-BK 23" Clerk Monitors - MultiSync E221N-BK 3 Year Warranty 4

Video Systems Equipment:

AVPro Edge AC-MXNET-1G-D Decoder; HDMI, USB, IR, RS232, Fiber & RJ45 4

AVPro Edge AC-MXNET-1G-EWP MXNet 1G encoder in a standard dual-gang wall plate format making audio/video connection points look sleek and professional. 4

AVPro Edge AC-MXNET-CBOX Control Box for MXNET System 1

ELMO 1376 DOCUMENT CAMERA - PX-10E 1

Extron 60-1614-01 VGA TO HDMI SCALER: DVC RGB-HD A 1

Audio Systems Equipment:

QSC CORE 110f DSP: Unified Core with 24 local audio I/O channels, 128x128 total network I/O channels with 8x8 Software-based Dante license included, USB AV bridging, dual LAN ports, POTS and VoIP telephony, 16x16 GPIO, 16 next-generation AEC processors, 1RU. 1

QSC MP-A80V Amplifier: 1600W FlexAmp technology Hi-Z / Lo-Z amplifier, 8 x 200W into 4?, 8?, 70V and 100V, Highpass filter per channel, GPIO for Remote Standby and Amp Status. 1

Atlas FAP40T Ceiling Speaker: 4" In Ceiling Speaker with 16-Watt 70/100V Transformer and Ported Enclosure 9

Audix M3W6 Audix M3W6 - Audience Ceiling Microphone 3

Shure MX418D/C Gooseneck Microphone - Mute/Unmute 4

Listen LS-58-072 Assisted Listening - Transmitter, Antenna and Receiver Bundle 1

Listen LR-4200-072-P1 Assisted Listening receiver: Intelligent DSP RF Receiver Package 1 7 1

Control Systems Equipment:

AMX FG2106-01 Control Processor: NX-1200 NetLinx NX Integrated Controller with 512 MB RAM, 1600 MIPS Processor, 4 UK of FLASH, 2 Serial Ports, 2 IR Ports, 4 I/O Ports, and IPv6 1
AMX FG5969-53 Touch Panel: MT-702, 7" Modero G5 Tablet Touch Panel 4
AVPro Edge AC-MXNET-SW24 24-Port RJ45 switch (1G) w/ Intelligent AV Processing, 8 PoE ports 1

Rack Accessories and Furniture:

Legrand MFR-1227GE 12SP27D MOBILE F RACK GE 1
Legrand PD-915R 9OUT15ARCKMNT POWER CEN 1
Legrand LBP-1R 10 PACK ROUND LACER BARS 1
Legrand UTR1 1SP UNIVERSAL HALF-RACK T 3

Installation Materials:

Extron 60-583-11 CPM101 BLACK - 1 Gang Wall Plate 5
Extron 70-296-11 3-Pin Female XLR Insert 4
Extron 70-314-17 Cat6 RJ45 Female Punchdown Insert type 1 8
Extron 70-314-18 Cat6 RJ45 Female Punchdown Insert type 2 2
CTI Custom Blank Plates - Cover Existing Unused Plates 1

Jury Deliberation Room - Courtroom 4B

Display Systems Equipment:

Samsung QE43T 43" Deliberation Display 1
Peerless SF660 43" Flat Wall Mount 1
Peerless ACC-WMVCS Component Shelf for DVD player 1

Video Systems Equipment:

Sony DVPSR510H CD/DVD Blu-ray Player 1

Courtroom 4A & Courtroom 4B Rack

Rack Accessories and Furniture:

Legrand MRK-4431 44SP/31D MULTIBAY MRK 1
Legrand MW-10FT-FC 10"(1)FAN/TOP W/FC M/W 1
Legrand UPS-2200R 2200VA/1650W UPS 2
Legrand LBP-1R 10 PACK ROUND LACER BARS 1
Legrand PD-815RA-PL POWER CENTER W/ANOD FACE 2
Legrand UTR1 1SP UNIVERSAL HALF-RACK T 6
Legrand PDT-1015C-NS PD THIN1-15A CIR10 OUT 2

Courtroom 4C

Display Systems Equipment:

Samsung QE65T 65" Audience Display 1

Samsung QE43T 43" Jury Display 2

NEC NP-P605UL Projector: WUXGA LCD, Laser Light Source, 20,000 hours light source life, 6000 Lumen Entry Installation Projector - Lens Shift, HDBaseT, Dual HDMI, VGA, MultiPresenter, USB Viewer Capability, 21.4 lbs., 5 Year Warranty 1

OFE OFE OFE Draper 16:9, 106" Screen Fabric 1

Peerless PRG-UNV-W Projector Mount with Spider Universal Adapter Plate 1

Peerless SF660 Universal Flat Mount For 39" to 80" TV's 2

Peerless ACC912 43" Display Ceiling Plate 1

Peerless ACC640-W 43" Display Ceiling Ring 1

Peerless ADD1012 43" Display Pipe 1

Peerless PLCM-2-UNL 43" Display Ceiling Mount 1

NEC EA271U-BK 27" Judge Monitor - MultiSync EA271U-BK - 3 Year Warranty 1

NEC E221N-BK 23" Clerk Monitors - MultiSync E221N-BK 3 Year Warranty 4

Video Systems Equipment:

AVPro Edge AC-MXNET-1G-D Decoder; HDMI, USB, IR, RS232, Fiber & RJ45 4

AVPro Edge AC-MXNET-1G-EWP MXNet 1G encoder in a standard dual-gang wall plate format making audio/video connection points look sleek and professional. 4

AVPro Edge AC-MXNET-CBOX Control Box for MXNET System 1

ELMO 1376 DOCUMENT CAMERA - PX-10E 1

Extron 60-1614-01 VGA TO HDMI SCALER: DVC RGB-HD A 1

Audio Systems Equipment:

QSC CORE 110f DSP: Unified Core with 24 local audio I/O channels, 128x128 total network I/O channels with 8x8 Software-based Dante license included, USB AV bridging, dual LAN ports, POTS and VoIP telephony, 16x16 GPIO, 16 next-generation AEC processors, 1RU. 1
QSC MP-A80V Amplifier: 1600W FlexAmp technology Hi-Z / Lo-Z amplifier, 8 x 200W into 4?, 8?, 70V and 100V, Highpass filter per channel, GPIO for Remote Standby and Amp Status. 1

Atlas FAP40T Ceiling Speaker: 4" In Ceiling Speaker with 16-Watt 70/100V Transformer and Ported Enclosure 9

Audix M3W6 Audix M3W6 - Audience Ceiling Microphone 3

Shure MX418D/C Gooseneck Microphone - Mute/Unmute 4

Listen LS-58-072 Assisted Listening - Transmitter, Antenna and Receiver Bundle 1

Listen LR-4200-072-P1 Assisted Listening receiver: Intelligent DSP RF Receiver Package 1 7 1

Control Systems Equipment:

AMX FG2106-01 Control Processor: NX-1200 NetLinx NX Integrated Controller with 512 MB RAM, 1600 MIPS Processor, 4 UK of FLASH, 2 Serial Ports, 2 IR Ports, 4 I/O Ports, and IPv6 1

AMX FG5969-53 Touch Panel: MT-702, 7" Modero G5 Tabletop Touch Panel 4

AVPro Edge AC-MXNET-SW24 24-Port RJ45 switch (1G) w/ Intelligent AV Processing, 8 PoE ports 1

Rack Accessories and Furniture:

Legrand MFR-1227GE 12SP27D MOBILE F RACK GE 1

Legrand PD-915R 9OUT15ARCKMINT POWER CEN 1

Legrand LBP-1R 10 PACK ROUND LACER BARS 1

Legrand UTR1 1SP UNIVERSAL HALF-RACK T 3

Installation Materials:

Extron 60-583-11 CPM101 BLACK - 1 Gang Wall Plate 5

Extron 70-296-11 3-Pin Female XLR Insert 4

Extron 70-314-17 Cat6 RJ45 Female Punchdown Insert type 1 8

Extron 70-314-18 Cat6 RJ45 Female Punchdown Insert type 2 2

CTI Custom Blank Plates - Cover Existing Unused Plates 1

Jury Deliberation Room - Courtroom 4C

Display Systems Equipment:

Samsung QE43T 43" Deliberation Display 1

Peerless SF660 43" Flat Wall Mount 1

Peerless ACC-WMVCS Component Shelf for DVD player 1

Video Systems Equipment:

Sony DVPSR510H CD/DVD Blu-ray Player 1

Courtroom 4D

Display Systems Equipment:

Samsung QE65T 65" Audience Display 1

Samsung QE43T 43" Jury Display 2

NEC NP-P605UL Projector: WUXGA LCD, Laser Light Source, 20,000 hours light source life, 6000 Lumen Entry Installation Projector - Lens Shift,

HDBaseT, Dual HDMI, VGA, MultiPresenter, USB Viewer Capability, 2.1.4 lbs., 5 Year Warranty 1

OFE OFE OFE Draper 16:9, 106" Screen Fabric 1

Peerless PRG-UNV-W Projector Mount with Spider Universal Adapter Plate 1

Peerless SF660 Universal Flat Mount For 39" to 80" TV's 2
Peerless ACC912 43" Display Ceiling Plate 1
Peerless ACC640-W 43" Display Ceiling Ring 1
Peerless ADD1012 43" Display Pipe 1
Peerless PLCM-2-UNL 43" Display Ceiling Mount 1
NEC EA271U-BK 27" Judge Monitor - MultiSync EA271U-BK - 3 Year Warranty 1
NEC E221N-BK 23" Clerk Monitors - MultiSync E221N-BK 3 Year Warranty 4
Video Systems Equipment:
AVPro Edge AC-MXNET-1G-D Decoder; HDMI, USB, IR, RS232, Fiber & RJ45 4
AVPro Edge AC-MXNET-1G-EWP MXNet 1G encoder in a standard dual-gang wall plate format making audio/video connection points look sleek and professional. 4
AVPro Edge AC-MXNET-CBOX Control Box for MXNET System 1
ELMO 1376 DOCUMENT CAMERA - PX-10E 1
Extron 60-1614-01 VGA TO HDMI SCALER: DVC RGB-HD A 1
Audio Systems Equipment:

QSC CORE 110f DSP: Unified Core with 24 local audio I/O channels, 128x128 total network I/O channels with 8x8 Software-based Dante license included, USB AV bridging, dual LAN ports, POTS and VoIP telephony, 16x16 GPIO, 16 next-generation AEC processors, 1RU. 1
QSC MP-A80V Amplifier: 1600W FlexAmp technology Hi-Z / Lo-Z amplifier, 8 x 200W into 4?, 8?, 70V and 100V, Highpass filter per channel, GPIO for Remote Standby and Amp Status. 1

Atlas FAP40T Ceiling Speaker: 4" In Ceiling Speaker with 16-Watt 70/100V Transformer and Ported Enclosure 9
Audix M3W6 Audix M3W6 - Audience Ceiling Microphone 3
Shure MX418D/C Gooseneck Microphone - Mute/Unmute 4
Listen LS-58-072 Assisted Listening - Transmitter, Antenna and Receiver Bundle 1
Listen LR-4200-072-P1 Assisted Listening receiver: Intelligent DSP RF Receiver Package 1 7 1
Control Systems Equipment:
AMX FG2106-01 Control Processor: NX-1200 NetLinx NX Integrated Controller with 512 MB RAM, 1600 MIPS Processor, 4 UK of FLASH, 2 Serial Ports, 2 IR Ports, 4 I/O Ports, and IPv6 1
AMX FG5969-53 Touch Panel: MT-702, 7" Modero G5 Tabletop Touch Panel 4
AVPro Edge AC-MXNET-SW24 24-Port RJ45 switch (1G) w/ Intelligent AV Processing, 8 PoE ports 1
Rack Accessories and Furniture:
Legrand MFR-1227GE 12SP27D MOBILE F RACK GE 1
Legrand PD-915R 9OUT15ARCKMNT POWER CEN 1

Legrand LBP-1R 10 PACK ROUND LACER BARS 1
Legrand UTR1 1SP UNIVERSAL HALF-RACK T 3

Installation Materials:

Extron 60-583-11 CPM101 BLACK - 1 Gang Wall Plate 5
Extron 70-296-11 3-Pin Female XLR Insert 4
Extron 70-314-17 Cat6 RJ45 Female Punchdown Insert type 1 8
Extron 70-314-18 Cat6 RJ45 Female Punchdown Insert type 2 2
CTI Custom Blank Plates - Cover Existing Unused Plates 1
Jury Deliberation Room - Courtroom 4D
Manufacturer P/N Description Qty

Display Systems Equipment:

Samsung QE43T 43" Deliberation Display 1
Peerless SF660 43" Flat Wall Mount 1
Peerless ACC-WMVCS Component Shelf for DVD player 1

Video Systems Equipment:

Sony DVPSR510H CD/DVD Blu-ray Player 1

Courtroom 4C & Courtroom 4D Rack

Manufacturer P/N Description Qty

Rack Accessories and Furniture:

Legrand MRK-4431 44SP/31D MULTIBAY MRK 1
Legrand MW-10FT-FC 10"(1)FAN/TOP W/FC M/W 1
Legrand LBP-1R 10 PACK ROUND LACER BARS 1
Legrand UPS-2200R 2200VA/1650W UPS 2
Legrand PD-815RA-PL POWER CENTER W/ANOD FACE 2
Legrand UTR1 1SP UNIVERSAL HALF-RACK T 6
Legrand PDT-1015C-NS PD THIN1-15A CIR10 OUT 2