

**EMERGENCY  
AND  
DISASTER  
GUIDE**



**GALVESTON  
COUNTY**



**ARE YOU READY?**



**Judge Mark Henry**  
**Galveston County**  
**Emergency Management Director**

**GALVESTON COUNTY**  
**OFFICE OF EMERGENCY MANAGEMENT**  
**1353 FM 646 WEST; DICKINSON, TEXAS 77539**

*The mission of the Galveston County Office of Emergency Management is to save lives, protect critical infrastructure, preserve property and reduce the impact of all-hazard incidents and disasters through planning, preparedness, response, and recovery activities. We proactively build a more resilient community through collaborative relationships with government agencies, emergency services, private sector partners, faith-based organizations, volunteer agencies and the citizens of Galveston County.*

**281-309-5002 or 888-384-2000**

**FOR LIFE THREATENING EMERGENCIES CALL 911**



# **GALVESTON COUNTY COMMISSIONERS COURT**



**PRECINCT 1 - DARRELL APFFEL**  
2516 TEXAS AVE. - 135  
TEXAS CITY 77590  
409-770-5474



**PRECINCT 2 - JOE GIUSTI**  
11730 HIGHWAY 6  
SANTA FE 77510  
409-770-5475



**PRECINCT 3 - STEPHEN HOLMES**  
9850 A EMMETT F LOWRY A100  
TEXAS CITY 77591  
409-770-5806



**PRECINCT 4 - KEN CLARK**  
174 CALDER ROAD - 112  
LEAGUE CITY 77573  
281-316-8744

# TROPICAL WEATHER

## Hurricane Season

### June 1st - Nov 30th



### Inland Flooding

It doesn't take a major hurricane to cause major impacts to an area. Even relatively weak tropical systems can produce vast amounts of rainfall well inland from the coast, leading to devastating flooding.

Storm Surge along the Coast

Tropical System

**INLAND FLOODING**

Your Location

Flooding from Heavy Rain

weather.gov/flood

### Potential Storm Surge Flooding

The NWS's potential storm surge flooding map indicates the **height** above ground that the **water could reach**.

LAND

COASTLINE

WATER

"Above Ground Level" describes the water level of the flooding that moves inland due to the combined effect of storm surge and tide.

weather.gov/hurricanes.gov

**A** Greater than 9 feet above ground

**B** 6-9 feet above ground

**C** 3-6 feet above ground

**D** 1-3 feet above ground

### Saffir-Simpson Hurricane Wind Scale

Category 1 - 5

**1** WIND: 74-95 mph  
DAMAGE: Very dangerous winds will produce some damage

**2** WIND: 96-110 mph  
DAMAGE: Extremely dangerous winds will cause extensive damage

**3** WIND: 111-129 mph  
DAMAGE: Devastating damage will occur

**4** WIND: 130-156 mph  
DAMAGE: Catastrophic damage will occur

**5** WIND: 157 mph or higher  
DAMAGE: Catastrophic damage will occur



# MAKE A PLAN



## Fill out a Family Emergency Communications Plan.

Create a paper copy of important contact information for family, friends, schools, doctors and work. Keep a copy in your bag.



## Fill out a Family Evacuation Plan.

Learn your evacuation Zip Zone. Find the supported evacuation routes from your area. Supported routes may offer your family additional resources as you travel to your safe evacuation area. If you need assistance with transportation, have access, functional or medical needs or are a person with language barriers, contact 2-1-1 and register with STEAR. Develop a plan to meet your individual and family needs for all hazards.

Hurricane Planning Information:

<https://www.ready.gov/plan>

<http://www.h-gac.com/hurricane-evacuation-planning/default.aspx>

C  
E  
R  
T

The Galveston County CERT (Community Emergency Response Team) provides free training to help prepare you to respond to emergencies in your own neighborhood. CERT facilitates hands-on instruction throughout the year to prepare ordinary citizens to support their neighbors in times of disaster.

For more information go to:

<https://galvestontxcert.samariteam.com/>



# RECOVERY

**BEGINS NOW**



## THE PROCESS

## INSURANCE

Begin your disaster recovery now with adequate insurance for your home and possessions. Separate flood insurance is available, even if you are not in a flood zone. Separate windstorm insurance covers wind and hail damage. Document all repairs and do a full inventory of your possessions prior to hurricane season. Notify your insurance company immediately if you experience any covered losses and begin the claims process.

## FEMA

In the event of a Federally Declared Disaster, you may be eligible for assistance from the Federal Emergency Management Agency (FEMA). If your home is damaged and not safe to live in, you may be eligible for temporary housing assistance. If you are a homeowner, you may be eligible for money to help pay for the cost of repairs and lost or damaged possessions not covered by insurance. The maximum FEMA assistance per household is currently \$34,000, with the average grant being around \$4000.

## SBA

The Small Business Association (SBA) offers very low interest disaster loans to assist homeowners and small businesses in their recovery. To be considered for a loan or certain types of FEMA grant assistance, such as transportation, personal property, and moving and storage, you must complete and return a SBA application.

**FEMA Disaster Assistance: (800) 621-3362**

**SBA Disaster Customer Service: (800) 659-2955**

**Flood Insurance Program Referral: (888) 379-9531**

**Texas Windstorm Insurance Association: (800) 788-8247**



# PROTECTING YOUR HOME BEFORE A STORM



Assess your family's insurance needs each year, including flood insurance for your home.



Trim your trees and shrubs; removing any dead limbs that might break off in a storm.



Store tools and materials to use to protect your windows from wind blown objects.



Move your vehicles into the garage or other secure location before threatening weather.



Bring outdoor items inside to keep them from damaging your home in strong winds.



Lock all of the doors and windows on your property, including the garage door.



# BUILD A KIT

Fill your disaster kit with items that meet the needs of those living in your home, including access, functional and medical needs.

## EVACUATION ITEMS

- Road maps
- Full fuel tank
- Cash and credit cards
- Car repair items
- Tent, blanket, pillows
- Clothes, sturdy shoes
- Rain gear and towels
- Books, games and toys

## FOOD AND WATER

- 7 day supply of food
- Plastic plates and utensils
- 1 gallon of water per person
- Manual can opener
- Baby food and formula

## PERSONAL ITEMS

- Prescriptions in bottles
- Other medications
- Cooler for meds if needed
- Hand sanitizer, wipes
- Toilet paper, paper towels
- Dental care products
- Hearing and vision aids
- Hygiene and comfort items
- Sunscreen and bug spray
- Diapers and wipers
- Medical and mobility devices

## TOOLS

- Radio with batteries
- Extra phone charger
- Flashlight and batteries
- Pocket knife
- Whistle and mirror
- Plastic tarp, duct tape
- Saw or hatchet
- Trash bags
- Work gloves and goggles
- Cleaning supplies

## FIRST AID KIT

- CAT or Soft-T tourniquets
- Band-aids and gauze
- Antibiotic cream
- Benedryl and pain reliever
- Thermometer
- Medical gloves
- Elastic wrap

## DOCUMENTS

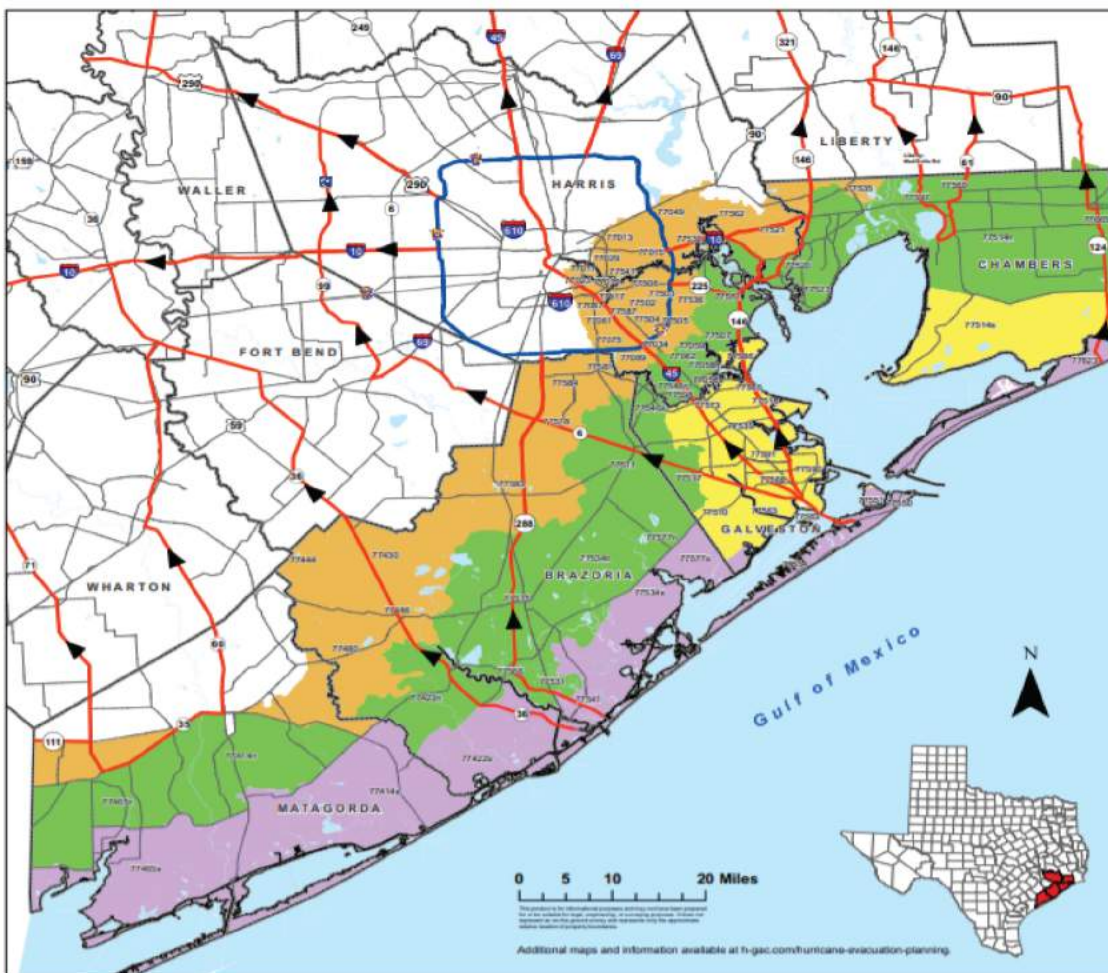
- ID, birth record and Social Security card
- Insurance policies
- Deeds, lease and titles
- Home inventory and photos
- Computer back-up
- Utility bills and extra keys
- Family photos



# EVACUATION

**VOLUNTARY** evacuations are issued when forecasted conditions indicate that it is not safe for you to remain in the area. These are issued by your Mayor or the County Judge.

**MANDATORY** evacuations are issued when forecasted conditions indicate that it is not safe for you to remain in the area. It is also an indication that emergency services may not be available until conditions improve. These are issued by your Mayor or the County Judge.



**Brazoria, Chambers, Galveston, Harris, and Matagorda Hurricane Evacuation Zip-Zones Coastal, A, B, C**

ZIP ZONE COASTAL				
77414s	77422s	77460s	77534s	77541
77500	77561	77554	77563	77577s
77623				
ZIP ZONE A				
77058s	77510	77514s	77518	77539
77563	77565	77568	77573	77586
77500	77591			
ZIP ZONE B				
77058n	77059	77062	77414n	77422n
77465n	77507	77511	77514n	77515
77517	77520	77523	77531	77534n
77540n	77546s	77560	77566	77571
77577n	77597	77598	77605	
ZIP ZONE C				
77011	77012	77013	77015	77017
77023	77029	77034	77049	77061
77075	77087	77089	77430	77444
77480	77486	77502	77503	77504
77505	77506	77521	77530	77535
77536	77547	77562	77578	77581
77583	77584	77587		

Some zip codes are split into north (n) and south (s) for evacuation purposes.

- Route Designation**
- Evacuation Corridors
  - Evacuation Connections
  - Other Roads
  - County Boundary



Additional maps and information available at [h-gac.com/hurricane-evacuation-planning](http://h-gac.com/hurricane-evacuation-planning).

# WHAT TO EXPECT AT A SHELTER

If you must evacuate and you do not have a place to stay, you may end up in a shelter until it is safe for you to return home. At most shelters you will find showers, rest room facilities and cots. Many offer meals for those who have evacuated, but may not



be able to accommodate special dietary requests. Be sure that you bring any special items your family might need like: diapers and formula, medications, medical and mobility devices, snacks, games, books and phone chargers.

Blankets are usually offered at the shelter but you might feel more comfortable with bedding from home.

## WHAT CAN I DONATE AND WHERE?



Community support after disasters is generous, but can be overwhelming if it is not delivered in a way that the impacted neighborhoods can use it. Many cities find themselves with mountains of clothes and household goods without the capacity to sort and deliver these items. If you would like to help, consider a cash donation to local charities working in your area or if you can donate your time and labor, consider looking at the local non-profits below that provide disaster relief and response to Galveston County residents.



### **4B Disaster Response Network**

[www.4BResponse.Org](http://www.4BResponse.Org)

### **Galveston Co. Community Emergency Response Team**

[galvestontxcert.samariteam.com](http://galvestontxcert.samariteam.com)

### **TEXSAR - Texas Search and Rescue**

[www.TEXSAR.org](http://www.TEXSAR.org)

### **Lighthouse Charities**

[www.lighthousecharityteam.com](http://www.lighthousecharityteam.com)

### **Medical Reserve Corps**

[www.GCHD.org](http://www.GCHD.org)

### **Team Rubicon**

[www.teamrubiconusa.org](http://www.teamrubiconusa.org)

# STEAR

State of Texas  
Emergency Assistance  
Registry

**REGISTER EVERY YEAR IF YOU NEED ASSISTANCE  
EVACUATING IN A DISASTER OR EMERGENCY.**

## **Who should register?**

- People with disabilities or limited mobility
- People who need medical assistance
- People with functional and access needs
- People who require transportation
- People with communication barriers



**CALL 2-1-1 OR GO TO:**  
<https://tdem.texas.gov/stear/>

**Local Assistance**

**Salvation Army 409-935-1190**

**Catholic Charities 409-948-0405**

**Santa Fe Family Services 409-927-4133**

**Hitchcock Family Welfare 409-986-5632**

**Interfaith Caring Ministries 281-332-3881**

**MI Lewis Social Service Center 281-534-2043**

# THE COST OF FLOOD INSURANCE IS A DROP IN THE BUCKET COMPARED TO THE COST OF FLOOD DAMAGE



\$700/YEAR  
AVERAGE FLOOD  
INSURANCE POLICY

\$43,000  
AVERAGE FLOOD  
INSURANCE CLAIM



# FLOODS



## FLOOD WATER RESCUES

- Heed weather warnings and follow directions.
- If water enters your home, shut off the main breaker for electricity as well as the gas.
- Go to the highest level of your home. **DO NOT ENTER ATTIC SPACES.** Climb on the roof only if absolutely necessary.
- If a rescue boat is floating down your street, get in it. Wear a life jacket if available.

Don't underestimate the power of water!



6 inches of fast-moving water can knock over and carry away an adult.

12 inches of fast-moving water can carry away a small car.

18-24 inches of fast-moving water can carry away most large SUVs, vans and trucks.



# COMING HOME

*after a flood*



Your home may be contaminated with mold or sewage—wear rubber boots, rubber gloves, and goggles during cleanup.



Make sure the electricity and gas are shut off to avoid fire or getting hurt. Have an electrician check the house before turning the power back on.



Photograph flood damage for insurance purposes.



Contact your insurance agent as soon as possible to talk through your options.



## Debris removal guidelines

In efforts to expedite the debris removal process, please follow these rules

Placing debris **near or on trees, poles or other structures** makes removal difficult. This includes fire hydrants and meters.

## Debris separation

Please separate debris into the **six categories**, shown below.

### Electronics

Television, computer, stereo, phone, DVD player

### Large Appliances

Refrigerator, washer/dryer, air conditioner, stove, water heater, dishwasher

### Hazardous waste

Oil, battery, pesticide, paint, cleaning supplies, compressed gas

### Vegetative debris

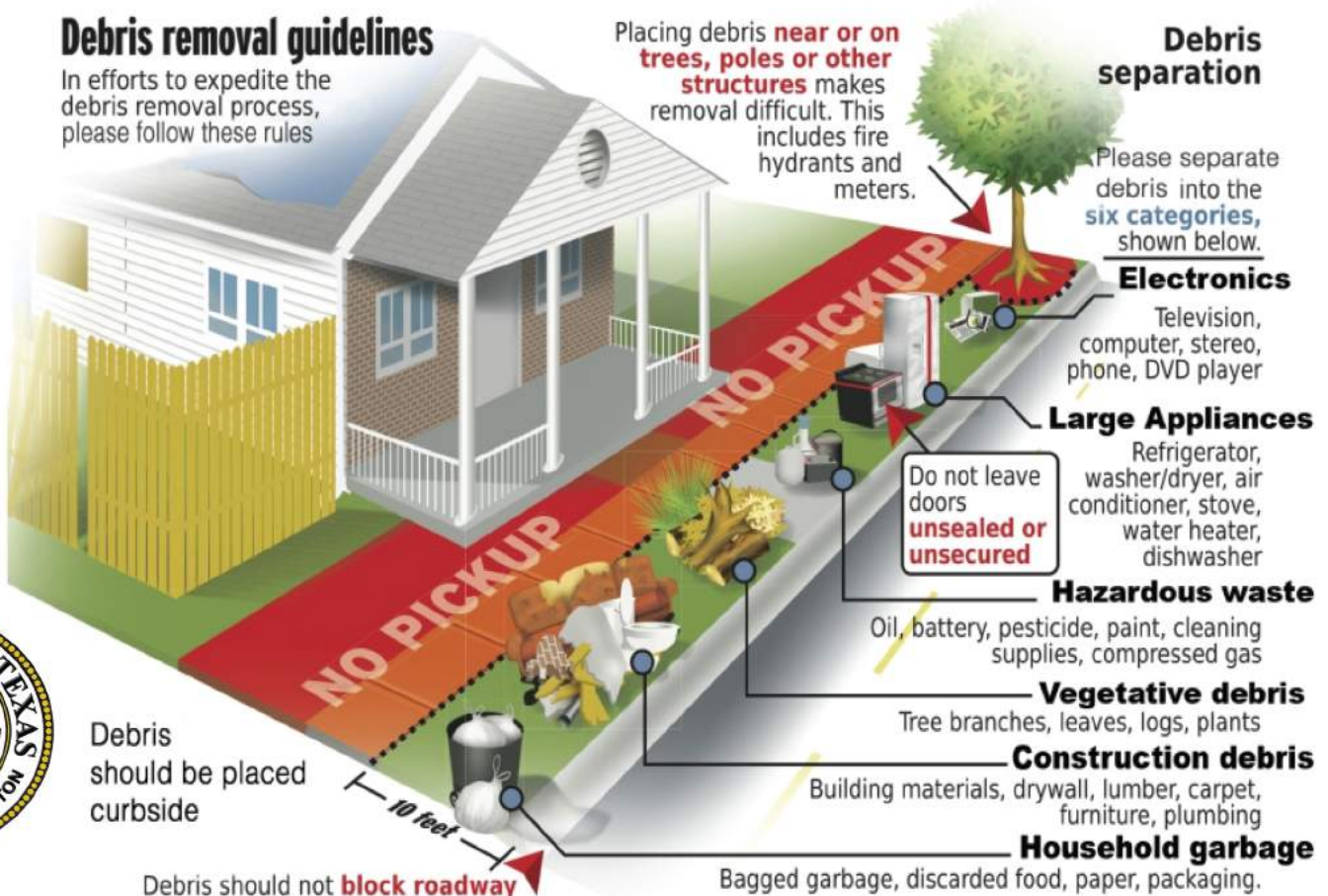
Tree branches, leaves, logs, plants

### Construction debris

Building materials, drywall, lumber, carpet, furniture, plumbing

### Household garbage

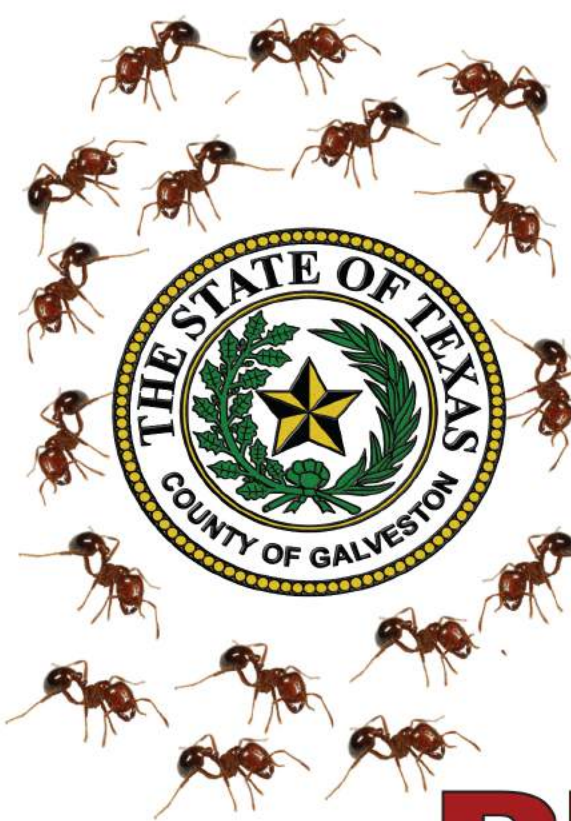
Bagged garbage, discarded food, paper, packaging.



Debris should be placed curbside

Debris should not **block roadway**





Human beings are not the only ones displaced in a disaster. Flood waters and high winds can send snakes, spiders, fire ants and alligators running for shelter. You may find unwanted guests in receding waters, debris piles and inside your home. Prepare your family for these encounters with **free first aid training**. Call 281-309-5009 for more information. Mosquito populations increase dramatically after tropical weather events. Consider adding insect repellent to your kit to keep your family safe.

# PESTS IN DISTRESS



# WHEN YOU HEAR IT DO IT



## LOCK DOWN

Lock doors - Get out of sight  
Turn off lights - Stay silent  
Prepare to evade or defend



## LOCK OUT

Go inside - Lock doors  
Business as usual  
Pay attention to surroundings  
Account for occupants



## EVACUATE

Bring your phone - Leave stuff  
Leave your stuff  
Follow instructions  
Account for occupants



## SHELTER

Follow instructions  
Tornado - Go to inside lower room  
HAZMAT - Seal the room



# SHELTER IN PLACE



**CALL 8-1-1  
BEFORE  
DIGGING  
TO AVOID  
PIPELINES**



**Know what's below.  
Call before you dig.**



# FIRE DANGER

## OUTDOOR BURNING

Outdoor burning is prohibited in the State of Texas except under certain conditions. The Galveston County Health District provides an Outdoor Burning Rule checklist that can help verify if a proposed burn meets the stipulations of the exemptions. In the event that a Burn Ban has been issued for the County, all outdoor burning is restricted for public safety.



### CARELESS BURNING CAN CAUSE WILDFIRE



**HOW**

- CHECK THE WEATHER TO SEE IF CONDITIONS WILL BE SAFE TO BURN.
- KEEP A WATER SUPPLY AND SHOVEL CLOSE.
- NEVER LEAVE A FIRE UNATTENDED. IT'S AGAINST THE LAW AND YOU CAN BE HELD LIABLE FOR DAMAGES.

KEEP DEBRIS BURNS SMALL. THEY ARE EASIER TO CONTROL AND AT LESS RISK TO ESCAPE. **15'** CLEAR ALL FLAMMABLE MATERIAL AND ANY VEGETATION WITHIN AT LEAST 15' OF THE BURN.

**WHAT**

- DO NOT BURN ANY GARBAGE.
- DRIED CLIPPINGS, BUSHES, PLANTS, AND PRUNINGS FROM VEGETATION ON YOUR PROPERTY.

**WHEN**

- DO NOT BURN IF IT IS WINDY, HOT, OR DRY.
- NO FIRES**  
ALWAYS CHECK FOR ANY FIRE RESTRICTIONS OR PERMITS IN THE AREA YOU INTEND TO BURN. IF YOU DON'T KNOW, CALL YOUR LOCAL FIRE AUTHORITY.

REPORT WILDFIRES CALL 9-1-1

**ONE LESS SPARK** **ONE LESS WILDFIRE**

FOR MORE INFORMATION:  
[fs.usda.gov/main/r4/fire-aviation](https://fs.usda.gov/main/r4/fire-aviation)

## FIREWORKS SAFETY TIPS

- Never re-light or pick up fireworks that fail
- Keep a hose or bucket of water nearby
- Light fireworks one at a time
- Make sure fireworks are legal in your area
- Sparklers should only be used with supervision
- Keep fireworks clear of dry vegetation and homes







**USEFUL INFORMATION:**

Sea Turtle Rescue: 1-866-TURTLE5

Sea Mammal Rescue: 1-800-9-MAMMAL

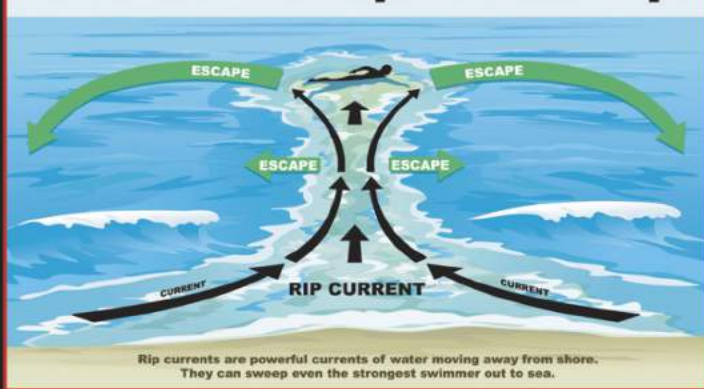
Water Quality: [www.TexasBeachWatch.com](http://www.TexasBeachWatch.com)

Tide Report: <https://tidesandcurrents.noaa.gov/map/>

# SURF AND SUN SAFETY

## RIP CURRENTS

**Break the Grip of the Rip!**



### IF CAUGHT IN A RIP CURRENT

- ◆ Don't fight the current
- ◆ Swim out of the current, then to shore
- ◆ If you can't escape, float or tread water
- ◆ If you need help, call or wave for assistance

### SAFETY

- ◆ Know how to swim
- ◆ Never swim alone
- ◆ If in doubt, don't go out

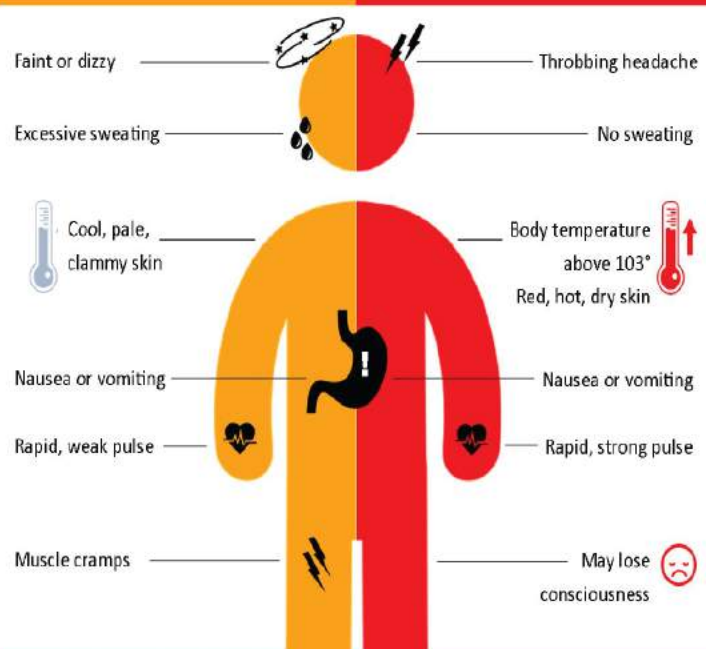
More information about rip currents can be found at the following web sites:  
[www.ripcurrents.noaa.gov](http://www.ripcurrents.noaa.gov)  
[www.usfa.org](http://www.usfa.org)



HEAT EXHAUSTION

OR

HEAT STROKE



- Get to a cooler, air conditioned place
- Drink water if fully conscious
- Take a cool shower or use cold compresses

**CALL 9-1-1**

- Take immediate action to cool the person until help arrives

# Know Where to Go

When Sheltering from a Tornado



## Prepare for Cold Weather

**PEOPLE** - Check on elderly neighbors and those with access and functional needs

**PETS** - Bring your pets inside

**PIPES** - Wrap or insulate water pipes and turn off water in vacation properties

**PLANTS** - Cover plants during freeze warnings



## FOG SAFETY

### Disabled Vehicle in Dense Fog

1. Pull well onto the shoulder

2. Turn off all lights except "flashers"

3. If possible leave your vehicle and move away from the road





# STAY INFORMED

JURISDICTION	MAIN NUMBER	NON-EMERGENCY	WEBSITE
Bayou Vista	409-935-8348	409-766-2322	<a href="http://bayouvista.us/">http://bayouvista.us/</a>
Clear Lake Shores	281-334-2799	281-334-1034	<a href="https://www.clearlakeshores-tx.gov/">https://www.clearlakeshores-tx.gov/</a>
Dickinson	281-337-2489	281-337-6300	<a href="https://www.ci.dickinson.tx.us/">https://www.ci.dickinson.tx.us/</a>
Friendswood	281-996-3200	281-996-3300	<a href="https://www.ci.friendswood.tx.us/">https://www.ci.friendswood.tx.us/</a>
Galveston	409-797-3500	409-765-3702	<a href="https://www.galvestontx.gov/">https://www.galvestontx.gov/</a>
Hitchcock	409-986-5591	409-986-5559	<a href="http://www.cityofhitchcock.org/">http://www.cityofhitchcock.org/</a>
Jamaica Beach	409-737-1142	409-737-1142	<a href="http://www.ci.jamaicabeach.tx.us/">http://www.ci.jamaicabeach.tx.us/</a>
Kemah	281-334-1611	281-334-5414	<a href="https://www.kemah-tx.gov/">https://www.kemah-tx.gov/</a>
La Marque	409-938-9202	409-938-9269	<a href="https://ci.la-marque.tx.us/">https://ci.la-marque.tx.us/</a>
League City	281-554-1000	281-332-2566	<a href="https://www.leaguecity.com/">https://www.leaguecity.com/</a>
Santa Fe	409-925-6412	409-925-2000	<a href="https://www.ci.santa-fe.tx.us/">https://www.ci.santa-fe.tx.us/</a>
Texas City	409-948-3111	409-643-5720	<a href="http://www.texas-city-tx.org/">http://www.texas-city-tx.org/</a>
Tiki Island	409-935-1427	409-935-0349	<a href="http://www.villageoftikiisland.org/">http://www.villageoftikiisland.org/</a>
Unincorporated Galveston County	409-766-2322	409-766-2322	<a href="http://www.galvestoncountytx.gov/">http://www.galvestoncountytx.gov/</a>



# Galveston County Emergency Management



County Judge Mark Henry  
Emergency Management  
Director

Galveston County Emergency Management 281-309-5002  
Galveston County Sheriff Non-Emergency 409-766-2300  
Galveston County Health District 409- 945-2540  
Gulf Coast Center Crisis Hotline 866-729-3848  
\*\*\*Call 911 for life threatening emergencies\*\*\*

**WEBSITE:** [WWW.GCOEM.ORG](http://WWW.GCOEM.ORG)



GalvestonCountyTX



GalvCountyOEM

