



THE COUNTY OF GALVESTON

RUFUS G. CROWDER, CPPO, CPPB
PURCHASING AGENT

COUNTY COURTHOUSE
722 Moody (21st Street)
Fifth (5th) Floor
GALVESTON, TEXAS 77550
(409) 770-5371

DATE: December 14, 2021

PROJECT NAME: Avenue S Reconstruction From 53rd Street to Seawall Blvd.

SOLICITATION NO: ITB #B221005

RE: ADDENDUM #1

To All Prospective Bidders:

The following information is being provided to aid in preparation of your bid submittal(s)

INSTRUCTIONS:

This addendum utilizes the change page method: Potential respondents shall remove and replace or add pages, or Drawing sheets, as directed in the change instructions below.

CONTRACT DOCUMENTS:

1. Remove and replace the Bid Proposal in its entirety with the attached Bid Proposal marked Addendum No. 1.

DRAWINGS:

2. Remove and replace Sheet 2 -Drawing Index with the attached Sheet 2 marked Addendum No. 1.
3. Remove and replace Sheet 9 - Quantity Tables with the attached Sheet 9 marked Addendum No. 1.
4. Remove and replace Sheet 107 - Plan & Profile Avenue S B.L. STA: 71+00 TO B.L. STA: 76+00 with the attached Sheet 107 marked Addendum No. 1.
5. Remove and replace Sheet 126 - Plan & Profile 35th St at Avenue S with the attached Sheet 126 marked Addendum No. 1.
6. Remove and replace Sheet 135 – Storm Laterals - 35th St with the attached Sheet 135 marked Addendum No. 1.
7. Remove and replace Sheet 141 – Intersection and Curb Ramp Layout - 35th St at Avenue S with the attached Sheet 141 marked Addendum No. 1.

Question #1: *Will you please upload the prebid meeting attendees list? Thank you.*

Response: The plan holders list is located in Civcast.

Question #2: *Where is the 3 x 2 RCB and 4 x 2 RCB located?*

Response: These items have been removed, see attached bid form.

Question #3: *Can you add a pay item for the 6 x 2 RCB?*

Response: 6 x 2 RCB has been added, see attached bid form.

Question #4: *Can you increase the quantity on Item 105? There is somewhere between 10000-12000 linear feet that needs dewatering.*

Response: Quantity for Item 105 has been increased to 11,000 LF.

Question #5: *Bid Item 8 – Furnish and Install Bus Shelter, 1 EA. The plans call for seven new bus shelters and removing and replacing 1 bus shelter. Should the bid item be changed to seven each and a bid item added for removing, storing and replacing 1 bus shelter?*

Response: Bid item 8 was changed to 6 EA. Bid item 9 was added as Remove, store and re-install bus shelter 1 EA. Item 24 is the bid item for the proposed bus shelter pads.

Question #6: *Bid Item 113- Utility Relocation of AT&T Facilities – 3 EA. Can you make this a cash allowance? There is no way we can estimate this cost.*

Response: This item has been removed.

Question #7: *Does this job have to be Domestic per AIS?*

Response: The job should be done per the listed specifications and instructions in the solicitation document.

If you have any further questions regarding this bid, please address them to the following:

Rufus G. Crowder, CPPO CPPB
Galveston County Purchasing Agent
722 Moody, Fifth (5th) Floor
Galveston, Texas 77550

E-mail: purchasing.bids@co.galveston.tx.us or contact the Purchasing Department at (409) 770-5371.

Please excuse us for any inconvenience that this may have caused.

Sincerely,



Rufus G. Crowder, CPPO CPPB
Purchasing Agent
Galveston County

BID PROPOSAL

The bidder hereby proposes to furnish all labor, material, equipment and incidentals for:

AVENUE S RECONSTRUCTION FROM 53RD ST. TO SEAWALL BLVD.

Enclosed is a Cashier's Check or Bid Bond in the sum of 5% of the greatest amount bid.

Bidder agrees to perform in accordance with the requirements of the contract documents in consideration of payment by the County of the prices in this proposal.

IN CASE OF DISCREPANCY BETWEEN UNIT PRICES AND EXTENDED PRICES, UNIT PRICES WILL GOVERN.

This bid sheet must be completely filled out in ink or typewritten with any necessary supplemental information attached.

The undersigned hereby agrees to all of the foregoing terms and provisions and to all terms and provisions of the contract, if awarded, which includes all provisions of this bid package.

BIDDER	_____
SIGNATURE	_____
PRINT NAME	_____
TITLE	_____
ADDRESS	_____
CITY, STATE	_____
ZIP	_____
TELEPHONE	_____
FAX NO	_____
DATE	_____
TAX I.D. No.	_____

Item No.	Spec Ref.	Item Description ⁽¹⁾	Unit	Unit Quantity	Unit Price ⁽²⁾	Total
GENERAL						
1.	01505	Mobilization including all permit fees.	LS	1	\$ _____	\$ _____
2.	01580	Furnish and Install Project Identification Sign, In Accordance with Plans and Specifications	EA	2	\$ _____	\$ _____
3.		Furnish Performance and Payment Bonds, and Insurance	LS	1	\$ _____	\$ _____
4.	01535	Tree Protection Services, Including Fencing, Complete-in-Place, In Accordance with the Plans and Specifications	LS	1	\$ _____	\$ _____
5.	02935	Landscaping Replacement, Including Sodding, Complete-in-Place, In Accordance with the Plans and Specifications	SY	7,420	\$ _____	\$ _____
6.	02935	Tree and Shrub Removal and Relocation, Complete-in-Place, In Accordance with the Plans and Specifications	EA	85	\$ _____	\$ _____
7.		Site Restoration Including Irrigation Systems, etc., In Accordance with Plans and Specifications	LS	1	\$ _____	\$ _____
8.	DWGS	Furnish and Install Bus Shelter, Complete-in-Place, In Accordance with the Plans and Specifications	EA	6	\$ _____	\$ _____
9.	DWGS	Remove, Store and Re-Install Existing Bus Shelter (Sta. 7+00), Complete-in-Place, In Accordance with the Plans and Specifications	EA	1	\$ _____	\$ _____

Item No.	Spec Ref.	Item Description ⁽¹⁾	Unit	Unit Quantity	Unit Price ⁽²⁾	Total
PAVEMENT						
10.	02050	Demolish and Remove Existing Structures, Equipment, and Materials only to the extent as required by the Execution of the Work detailed in the Contract Documents. Dispose of Demolished Materials and Equipment in Accordance with the Plans and Specifications. Measured by Block.	EA	23	\$ _____	\$ _____
11.	02076	Sawcut, Remove and Dispose of Existing Asphalt & Base (All Depths), Complete-in-Place, In Accordance with the Plans and Specifications	SY	46,703	\$ _____	\$ _____
12.	02076	Remove and Dispose of Existing Driveways, Complete-in-Place, In Accordance with the Plans and Specifications	SY	3,269	\$ _____	\$ _____
13.	02076	Remove and Dispose of Existing Sidewalks, Complete-in-Place, In Accordance with the Plans and Specifications	SY	3,623	\$ _____	\$ _____
14.	02076	Remove and Dispose of Existing Concrete Curb and Gutter, Complete-in-Place, In Accordance with the Plans and Specifications	LF	15,378	\$ _____	\$ _____
15.	02242	Prepare and Compact 6" Lime / Fly Ash Stabilized Subgrade, Complete-in-Place, In Accordance with the Plans and Specifications	SY	43,800	\$ _____	\$ _____
16.	02242	Furnish Lime (3%) for Stabilized Subgrade, Complete-in-Place, In Accordance with the Plans and Specifications	TON	434	\$ _____	\$ _____
17.	02242	Furnish Fly-Ash (7%) for Stabilized Subgrade, Complete-in-Place, In Accordance with the Plans and Specifications	TON	974	\$ _____	\$ _____

Item No.	Spec Ref.	Item Description ⁽¹⁾	Unit	Unit Quantity	Unit Price ⁽²⁾	Total
18.	02521	Furnish and Install 8" Reinforced Concrete Pavement, Complete-in-Place, In Accordance with the Plans and Specifications	SY	42,000	\$ _____	\$ _____
19.	02521	Furnish and Install 8" Reinforced High Early Strength Concrete Pavement, Complete-in-Place, In Accordance with the Plans and Specifications	SY	500	\$ _____	\$ _____
20.	02532	Furnish and Install 6" Reinforced Concrete Curb, Complete-in-Place, In Accordance with the Plans and Specifications	LF	16,500	\$ _____	\$ _____
21.	02530	Furnish and Install 4 1/2" Reinforced Concrete Sidewalks with Base, Complete-in-Place, In Accordance with the Plans and Specifications	SF	86,000	\$ _____	\$ _____
22.	02531	Furnish and Install 6" Concrete Driveways, Complete-in-Place, In Accordance with the Plans and Specifications	SY	4,950	\$ _____	\$ _____
23.	02530	Furnish and Install Curb Ramps, Complete-in-Place, In Accordance with the Plans and Specifications	EA	142	\$ _____	\$ _____
24.	DWGS	Furnish and Install 6" Concrete Reinforced Bus Shelter Pad, Complete-in-Place, In Accordance with the Plans and Specifications	SF	860	\$ _____	\$ _____
25.	02570	Furnish and Install Side Street Asphalt Pavement Transitions Including Concrete Curb and Gutter, Complete-in-Place, In Accordance with the Plans and Specifications	SY	2,600	\$ _____	\$ _____

Item No.	Spec Ref.	Item Description ⁽¹⁾	Unit	Unit Quantity	Unit Price ⁽²⁾	Total
WATERLINE						
26.	02669	Cut, Plug, Fill and Abandon 12" Waterline, Complete-in-Place, In Accordance with the Plans and Specifications	EA	2	\$ _____	\$ _____
27.	02669	Cut, Plug, Fill and Abandon 8" Waterline, Complete-in-Place, In Accordance with the Plans and Specifications	EA	12	\$ _____	\$ _____
28.	02669	Cut, Plug, Fill and Abandon 6" Waterline, Complete-in-Place, In Accordance with the Plans and Specifications	EA	7	\$ _____	\$ _____
29.	02669	Cut, Plug, Fill and Abandon 2" Waterline, Complete-in-Place, In Accordance with the Plans and Specifications	EA	5	\$ _____	\$ _____
30.	02669	Cut, Plug, Fill and Abandon 1" Waterline, Complete-in-Place, In Accordance with the Plans and Specifications	EA	1	\$ _____	\$ _____
31.	02669	Cut, Plug, Fill and Abandon Waterline (Size Unknown), Complete-in-Place, In Accordance with the Plans and Specifications	EA	5	\$ _____	\$ _____
32.	02664	Furnish and Install 12" PVC Waterline, Complete-in-Place, In Accordance with the Plans and Specifications	LF	8,600	\$ _____	\$ _____
33.	02664	Furnish and Install 12" PVC Waterline with Trenchless Construction, Complete-in-Place, In Accordance with the Plans and Specifications	LF	305	\$ _____	\$ _____
34.	02664	Furnish and Install 8" PVC Waterline, Complete-in-Place, In Accordance with the Plans and Specifications	LF	310	\$ _____	\$ _____
35.	02664	Furnish and Install 6" PVC Waterline, Complete-in-Place, In Accordance with the Plans and Specifications	LF	410	\$ _____	\$ _____

Item No.	Spec Ref.	Item Description ⁽¹⁾	Unit	Unit Quantity	Unit Price ⁽²⁾	Total
36.	02664	Furnish and Install 2" PVC Waterline, Complete-in-Place, In Accordance with the Plans and Specifications	LF	55	\$ _____	\$ _____
37.	02076	Remove and Dispose of Existing 8" Waterline, Complete-in-Place, In Accordance with the Plans and Specifications	LF	800	\$ _____	\$ _____
38.	02076	Remove and Dispose of 6" Waterline, Complete-in-Place, In Accordance with the Plans and Specifications	LF	33	\$ _____	\$ _____
39.	02076	Remove and Salvage Existing Fire Hydrants, Complete-in-Place, In Accordance with the Plans and Specifications	EA	14	\$ _____	\$ _____
40.	02626	Furnish and Install Fire Hydrants including Valves & Piping, Complete-in-Place, In Accordance with the Plans and Specifications	EA	28	\$ _____	\$ _____
41.	02626	Furnish and Install 6" Hydrant Branch, Including Tee, Complete-in-Place, In Accordance with the Plans and Specifications	LF	270	\$ _____	\$ _____
42.	02626	Furnish and Install 12" Gate Valve, Complete-in-Place, In Accordance with the Plans and Specifications	EA	34	\$ _____	\$ _____
43.	02626	Furnish and Install 8" Gate Valve, Complete-in-Place, In Accordance with the Plans and Specifications	EA	4	\$ _____	\$ _____
44.	02626	Furnish and Install 6" Gate Valve, Complete-in-Place, In Accordance with the Plans and Specifications	EA	8	\$ _____	\$ _____
45.	02626	Furnish and Install 2" Gate Valve, Complete-in-Place, In Accordance with the Plans and Specifications	EA	1	\$ _____	\$ _____
46.	02626	Furnish and Install 10" X 10" TS&V w/ Box, Complete-in-Place, In Accordance with the Plans and Specifications	EA	1	\$ _____	\$ _____

Item No.	Spec Ref.	Item Description ⁽¹⁾	Unit	Unit Quantity	Unit Price ⁽²⁾	Total
47.	02626	Furnish and Install 6" X 6" TS&V w/ Box, Complete-in-Place, In Accordance with the Plans and Specifications	EA	1	\$ _____	\$ _____
48.	02626	Furnish and Install 8" Cap w/Blow Off, Complete-in-Place, In Accordance with the Plans and Specifications	EA	1	\$ _____	\$ _____
49.	02626	Furnish and Install 6" Cap w/Blow Off, Complete-in-Place, In Accordance with the Plans and Specifications	EA	4	\$ _____	\$ _____
50.	02626	Furnish and Install 12" Wet Connection, Complete-in-Place, In Accordance with the Plans and Specifications	EA	2	\$ _____	\$ _____
51.	02626	Furnish and Install 8" Wet Connection, Complete-in-Place, In Accordance with the Plans and Specifications	EA	13	\$ _____	\$ _____
52.	02626	Furnish and Install 6" Wet Connection, Complete-in-Place, In Accordance with the Plans and Specifications	EA	2	\$ _____	\$ _____
53.	02626	Furnish and Install 2" Wet Connection, Complete-in-Place, In Accordance with the Plans and Specifications	EA	1	\$ _____	\$ _____
54.	02626	Furnish and Install 1" Wet Connection, Complete-in-Place, In Accordance with the Plans and Specifications	EA	1	\$ _____	\$ _____
55.	02625	Furnish and Install 2" Long Side Service Leads, Complete-in-Place, In Accordance with the Plans and Specifications	EA	78	\$ _____	\$ _____
56.	02625	Furnish and Install 2" Short Side Service Leads, Complete-in-Place, In Accordance with the Plans and Specifications	EA	135	\$ _____	\$ _____
57.	02625	Furnish and Install 2 1/2" Short Side Service Leads, Complete-in-Place, In Accordance with the Plans and Specifications	EA	2	\$ _____	\$ _____

Item No.	Spec Ref.	Item Description ⁽¹⁾	Unit	Unit Quantity	Unit Price ⁽²⁾	Total
58.	02625	Furnish and Install 8" Short Side Service Leads, Complete-in-Place, In Accordance with the Plans and Specifications	EA	1	\$ _____	\$ _____
59.	02625	Furnish and Install 6" Short Side Service Leads, Complete-in-Place, In Accordance with the Plans and Specifications	EA	1	\$ _____	\$ _____
60.	02625	Furnish and Install 6" Fire Tap Connections, Complete-in-Place, In Accordance with the Plans and Specifications	EA	3	\$ _____	\$ _____
61.	01526	Trench Safety System Construction of Storm Sewer, Complete-in-Place, In Accordance with the Plans and Specifications	LF	9,375	\$ _____	\$ _____
SANITARY SEWER						
62.	02076	Remove & Dispose Existing 15" Pipe, Complete-in-Place, In Accordance with the Plans and Specifications	LF	903	\$ _____	\$ _____
63.	02730	Furnish and Install 15" PVC Sanitary Pipe, Complete-in-Place, In Accordance with the Plans and Specifications	LF	903	\$ _____	\$ _____
64.	02764	Connect to Existing Manhole and Adjust to Finished Grade, Complete-in-Place, In Accordance with the Plans and Specifications	EA	3	\$ _____	\$ _____
65.	02076	Remove & Dispose of Existing Manhole, Complete-in-Place, In Accordance with the Plans and Specifications	EA	2	\$ _____	\$ _____
66.	02601	Install Manhole, Complete-in-Place, In Accordance with the Plans and Specifications	EA	2	\$ _____	\$ _____
67.	02790	Bypass Pumping	LS	1	\$ _____	\$ _____

Item No.	Spec Ref.	Item Description ⁽¹⁾	Unit	Unit Quantity	Unit Price ⁽²⁾	Total
68.	01526	Trench Safety System Construction of Sanitary Sewer, Complete-in-Place, In Accordance with the Plans and Specifications	LF	903	\$ _____	\$ _____
DRAINAGE						
69.	02076	Remove and Dispose of Existing Manhole, Complete-in-Place, In Accordance with the Plans and Specifications	EA	5	\$ _____	\$ _____
70.	02076	Remove and Dispose of Existing Inlet, Complete-in-Place, In Accordance with the Plans and Specifications	EA	16	\$ _____	\$ _____
71.	02076	Remove and Dispose of Storm Pipe (all sizes), Complete-in-Place, In Accordance with the Plans and Specifications	LF	500	\$ _____	\$ _____
72.	02076	Remove and Dispose of Existing Bridge Block Structures, Complete-in-Place, In Accordance with the Plans and Specifications	LF	540	\$ _____	\$ _____
73.	02720	Furnish and Install 12" RCP, Complete-in-Place, In Accordance with the Plans and Specifications	LF	90	\$ _____	\$ _____
74.	02720	Furnish and Install 24" RCP, Complete-in-Place, In Accordance with the Plans and Specifications	LF	1,292	\$ _____	\$ _____
75.	02720	Furnish and Install 36" RCP, Complete-in-Place, In Accordance with the Plans and Specifications	LF	54	\$ _____	\$ _____
76.	02720	Furnish and Install 48" RCP, Complete-in-Place, In Accordance with the Plans and Specifications	LF	85	\$ _____	\$ _____
77.	02720	Furnish and Install 5' X 2' RCB, Complete-in-Place, In Accordance with the Plans and Specifications	LF	182	\$ _____	\$ _____

Item No.	Spec Ref.	Item Description ⁽¹⁾	Unit	Unit Quantity	Unit Price ⁽²⁾	Total
78.	02720	Furnish and Install 5' X 3' RCB, Complete-in-Place, In Accordance with the Plans and Specifications	LF	92	\$ _____	\$ _____
79.	02720	Furnish and Install 6' X 2' RCB, Complete-in-Place, In Accordance with the Plans and Specifications	LF	50	\$ _____	\$ _____
80.	02720	Furnish and Install TYPE "C" Curb Inlet (5'), Complete-in-Place, In Accordance with the Plans and Specifications	EA	7	\$ _____	\$ _____
81.	02720	Furnish and Install TYPE "C-1" Curb Inlet (10'), Complete-in-Place, In Accordance with the Plans and Specifications	EA	5	\$ _____	\$ _____
82.	02720	Furnish and Install TYPE "C-2" Curb Inlet (15'), Complete-in-Place, In Accordance with the Plans and Specifications	EA	8	\$ _____	\$ _____
83.	02720	Furnish and Install TYPE "2-AZ" Inlet, Complete-in-Place, In Accordance with the Plans and Specifications	EA	1	\$ _____	\$ _____
84.	02720	Furnish and Install 4' Dia. Manhole, Complete-in-Place, In Accordance with the Plans and Specifications	EA	7	\$ _____	\$ _____
85.	02720	Furnish and Install 6' X 6' Junction Box, Complete-in-Place, In Accordance with the Plans and Specifications	EA	9	\$ _____	\$ _____
86.	02720	Furnish and Install 8' X 8' Junction Box, Complete-in-Place, In Accordance with the Plans and Specifications	EA	2	\$ _____	\$ _____
87.	01526	Trench Safety System Construction of Storm Sewer, Complete-in-Place, In Accordance with the Plans and Specifications	LF	2,200	\$ _____	\$ _____

SWPPP						
88.	01565	Implementation and Management of the SWPPP	MO	15	\$ _____	\$ _____
89.	01566	Furnish and Install Inlet Protection Barrier for Stage I Inlets, Complete-in-Place, In Accordance with the Plans and Specifications	EA	28	\$ _____	\$ _____
90.	01566	Furnish and Install Inlet Protection Barrier for Stage II Inlets, Complete-in-Place, In Accordance with the Plans and Specifications	EA	28	\$ _____	\$ _____
91.	01566	Furnish and Install Concrete Truck Washout Area, Complete-in-Place, In Accordance with the Plans and Specifications	LS	1	\$ _____	\$ _____

Item No.	Spec Ref.	Item Description ⁽¹⁾	Unit	Unit Quantity	Unit Price ⁽²⁾	Total
SIGNING AND STRIPING						
92.	02582	Furnish and Install Thermo Plastic Pav Mrk (W) 4" (SLD), Complete-in-Place, In Accordance with the Plans and Specifications	LF	18,386	\$ _____	\$ _____
93.	02582	Furnish and Install Thermo Plastic Pav Mrk (W) 12" (SLD), Complete-in-Place, In Accordance with the Plans and Specifications	LF	5,500	\$ _____	\$ _____
94.	02582	Furnish and Install Thermo Plastic Pav Mrk (W) 24" (SLD), Complete-in-Place, In Accordance with the Plans and Specifications	LF	4,400	\$ _____	\$ _____
95.	02582	Furnish and Install Thermo Plastic Pav Mrk (W) ARROW, Complete-in-Place, In Accordance with the Plans and Specifications	EA	4	\$ _____	\$ _____
96.	02582	Furnish and Install Thermo Plastic Pav Mrk (W) WORD, Complete-in-Place, In Accordance with the Plans and Specifications	EA	42	\$ _____	\$ _____
97.	02582	Furnish and Install Thermo Plastic Pav Mrk (DBL Y) 4" (SLD), Complete-in-Place, In Accordance with the Plans and Specifications	LF	15,300	\$ _____	\$ _____

Item No.	Spec Ref.	Item Description ⁽¹⁾	Unit	Unit Quantity	Unit Price ⁽²⁾	Total
TRAFFIC CONTROL						
98.	01570	Furnish and Install Barricades, Barrels, Cones, Signage and Traffic Handling, Complete-in-Place, In Accordance with the Plans and Specifications	MO	15	\$ _____	\$ _____
99.	01570	Furnish and Install Removable Work Zone Pavement Markings (4") (W), Complete-in-Place, In Accordance with the Plans and Specifications	LF	15,000	\$ _____	\$ _____
100.	01570	Furnish and Install Removable Work Zone Pavement Markings (24") (W), Complete-in-Place, In Accordance with the Plans and Specifications	LF	800	\$ _____	\$ _____

Item No.	Spec Ref.	Item Description ⁽¹⁾	Unit	Unit Quantity	Unit Price ⁽²⁾	Total
EXTRA WORK ITEMS						
101.	01570	Flagger - As Directed by Engineer (Min. Bid \$20 / HR)	HR	250	\$ _____	\$ _____
102.	02790	Furnish and Install Sanitary Flow Stop Service for Temporarily Stopping Flow in Pipe, 8", Complete-in-Place, In Accordance with the Plans and Specifications	EA	10	\$ _____	\$ _____
103.		Furnish and Install Construction Safety Fence as Directed by Engineer (Min. Bid \$4 / LF)	LF	2,500	\$ _____	\$ _____
104.	02227	Pot Hole for Utility Investigation - As Directed by Engineer (Min. Bid \$1,000 / EA)	EA	15	\$ _____	\$ _____
105.	01563	Well Pointing System (Min. Bid \$25 / LF)	LF	11,000	\$ _____	\$ _____
106.	02601	Replace Existing Sanitary Sewer Manhole, As Necessary	EA	3	\$ _____	\$ _____
107.	02625	Furnish and Install Additional 2" Long Side Service Leads, Not Called on Plans, Complete-in-Place	EA	75	\$ _____	\$ _____
108.	02625	Furnish and Install Additional 2" Short Side Service Leads, Not Called on Plans, Complete-in-Place	EA	15	\$ _____	\$ _____
109.	02730	Remove and Replace existing Sanitary Sewer Service Lines, Complete-in-Place	EA	20	\$ _____	\$ _____
110.		Remove and replace Unsuitable Subgrade	CY	2,500	\$ _____	\$ _____

Item No.	Spec Ref.	Item Description ⁽¹⁾	Unit	Unit Quantity	Unit Price ⁽²⁾	Total
111.	02605	Cast in Place back of sidewalk concrete Headwalls, As Required, 6" thick (varying in height from 6" to 18" tall) with reinforcing steel	LF	600	\$ _____	\$ _____
112.		Protection of Electric Pole Guy Wires located within Existing Sidewalk, As Necessary for Construction	EA	3	\$ _____	\$ _____
113.		Removal of existing and abandoned gas lines. Gas lines range from 0.75" to 4" diameter and vary between PVC and steel pipe.	LF	500	\$ _____	\$ _____
114.	02228	Extra Unit Price Work for Excavation and Backfill	CY	2,100	\$ _____	\$ _____

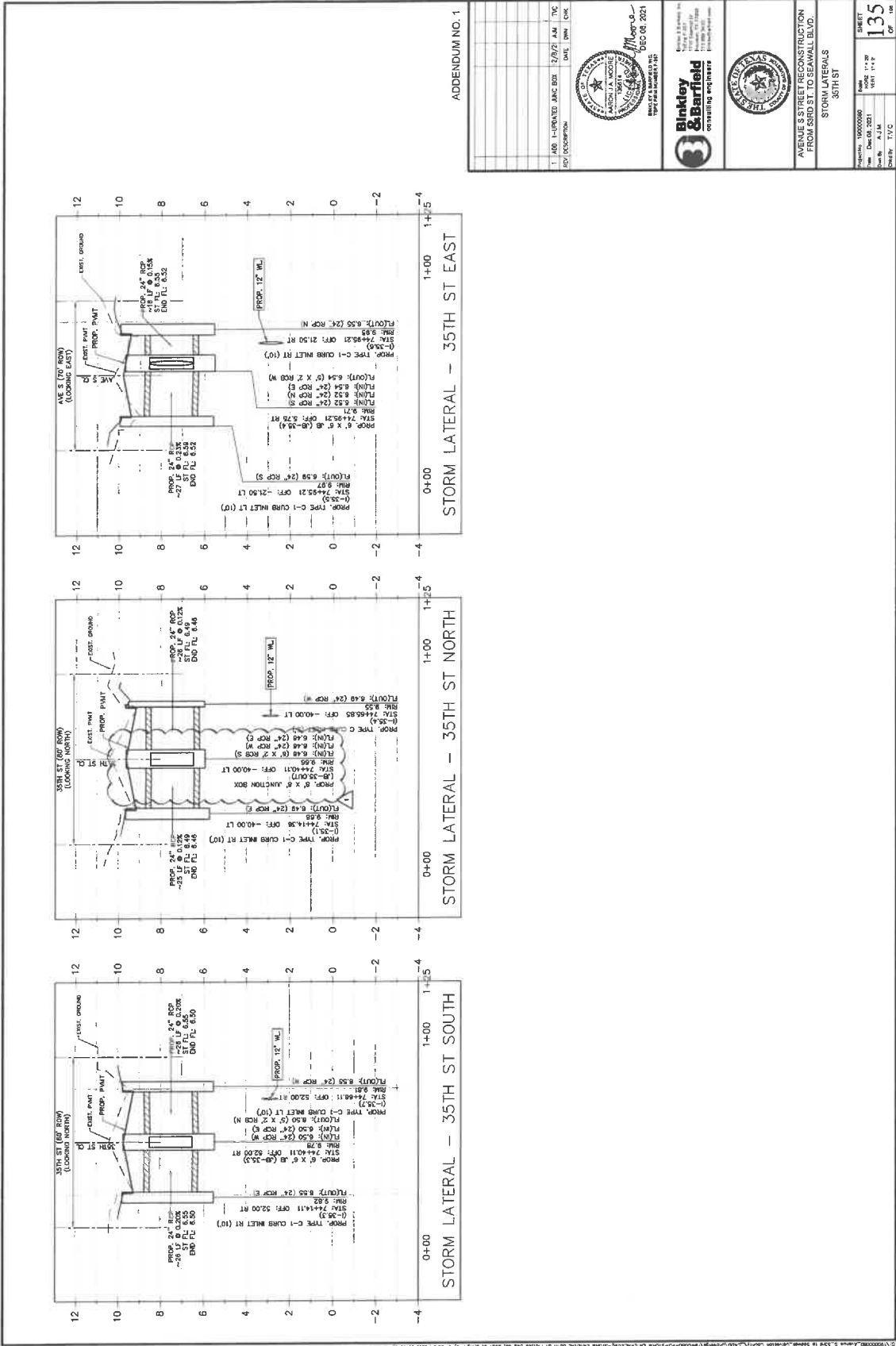
Item No.	Spec Ref.	Item Description ⁽¹⁾	Unit	Unit Quantity	Unit Price ⁽²⁾	Total
115.		<p>"Furnish and Install "GRIDSMART SMK SERIES Single Camera / Dual Processor Fish-Eye Camera System" at each intersection with traffic lights</p> <p>The GRIDSMART is an aerial detection system that consists of a pole mounted camera, wiring and a CPU that gets placed in the control cabinet and monitors all four (4) intersection quadrants through the single camera. This application does not rely on any in-pavement loop detectors or pods. If there are any existing in-pavement loop detectors or pods, they can be abandoned and demolished with the old pavement section and will be replaced with the GRIDSMART system.</p> <p>For bidding purposes, each signalized intersection should be called for being outfitted with a quantity of one (1) GRIDSMART system."</p>	EA	4	\$ _____	\$ _____
GRAND TOTAL					\$ _____	

**GRAND TOTAL
(SUM OF ITEMS ABOVE)**

\$ _____

Notes:

- (1) The intent of the Contract Documents is for the Contractor to include all items necessary for the proper execution and completion of the Work described in the Contract Documents. No separate measurement and payment shall be made for any work unless identified as a pay item in the BID. Include the cost of work not identified as a separate pay item in Contract price bid for items of which this work is a component. In case of discrepancy between measurement and payment within the BID and Technical Specification Section, the BID shall govern.
- (2) In the event of a discrepancy, this column shall govern.



ADDENDUM NO. 1

PROJECT NO.	150000000	DATE	08/08/2021
DATE	08/08/2021	SCALE	AS SHOWN
DESIGNER	AVI	CHECKER	AVI
DRAWN	AVI	DATE	08/08/2021

Binkley & Barfield
CONSULTING ENGINEERS

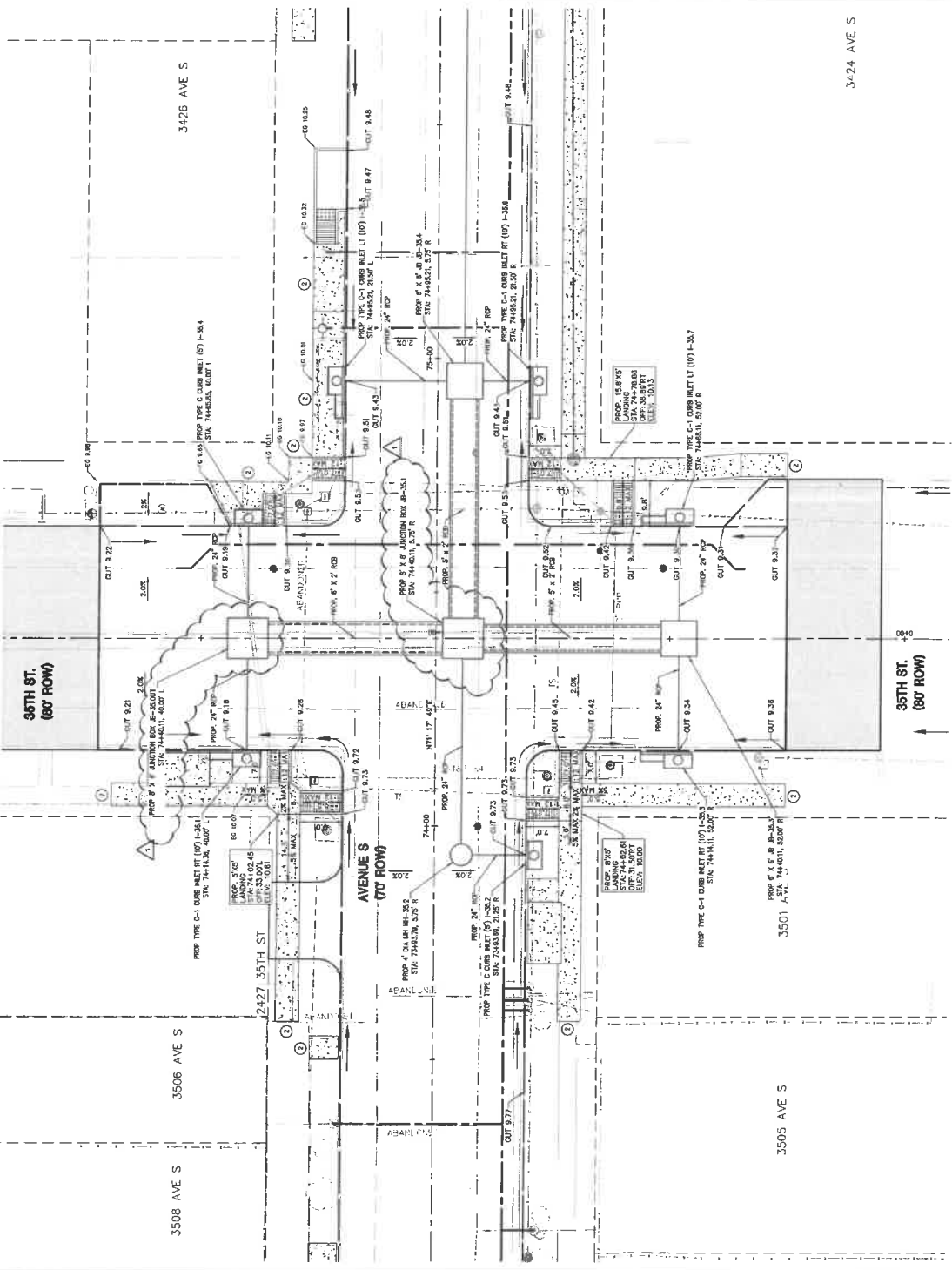
Professional Seal: AVI, State of Texas, No. 12345, Exp. 08/08/2021

PROJECT: AVENUE STREET CONSTRUCTION FROM 35TH ST TO SMALL BLVD.
SHEET: STORM LATERALS
35TH ST

PROJECT NO. 150000000
DATE 08/08/2021
SCALE AS SHOWN
SHEET 135 OF 138



- LEGEND**
- ① PROP. 8" CONC. PART 4" CONC. CURB
 - ② PROP. SINK/DRY TO BE INTO EXIST. SINKHOLE. SEE EXISTING DRAWINGS FOR DETAIL.
 - ③ PROP. CONC. WALKWAY, BRIDGE
 - ④ PROP. CONC. DRIVEWAY/DRIVEWAYS
 - ⑤ PROP. CONC. DRIVEWAY/DRIVEWAYS
 - ⑥ PROP. CONC. DRIVEWAY/DRIVEWAYS
 - ⑦ PROP. CONC. DRIVEWAY/DRIVEWAYS
 - ⑧ PROP. CONC. DRIVEWAY/DRIVEWAYS
 - ⑨ PROP. CONC. DRIVEWAY/DRIVEWAYS
 - ⑩ PROP. CONC. DRIVEWAY/DRIVEWAYS
 - ⑪ PROP. CONC. DRIVEWAY/DRIVEWAYS
 - ⑫ PROP. CONC. DRIVEWAY/DRIVEWAYS
 - ⑬ PROP. CONC. DRIVEWAY/DRIVEWAYS
 - ⑭ PROP. CONC. DRIVEWAY/DRIVEWAYS
 - ⑮ PROP. CONC. DRIVEWAY/DRIVEWAYS
 - ⑯ PROP. CONC. DRIVEWAY/DRIVEWAYS
 - ⑰ PROP. CONC. DRIVEWAY/DRIVEWAYS
 - ⑱ PROP. CONC. DRIVEWAY/DRIVEWAYS
 - ⑲ PROP. CONC. DRIVEWAY/DRIVEWAYS
 - ⑳ PROP. CONC. DRIVEWAY/DRIVEWAYS
 - ㉑ PROP. CONC. DRIVEWAY/DRIVEWAYS
 - ㉒ PROP. CONC. DRIVEWAY/DRIVEWAYS
 - ㉓ PROP. CONC. DRIVEWAY/DRIVEWAYS
 - ㉔ PROP. CONC. DRIVEWAY/DRIVEWAYS
 - ㉕ PROP. CONC. DRIVEWAY/DRIVEWAYS
 - ㉖ PROP. CONC. DRIVEWAY/DRIVEWAYS
 - ㉗ PROP. CONC. DRIVEWAY/DRIVEWAYS
 - ㉘ PROP. CONC. DRIVEWAY/DRIVEWAYS
 - ㉙ PROP. CONC. DRIVEWAY/DRIVEWAYS
 - ㉚ PROP. CONC. DRIVEWAY/DRIVEWAYS
 - ㉛ PROP. CONC. DRIVEWAY/DRIVEWAYS
 - ㉜ PROP. CONC. DRIVEWAY/DRIVEWAYS
 - ㉝ PROP. CONC. DRIVEWAY/DRIVEWAYS
 - ㉞ PROP. CONC. DRIVEWAY/DRIVEWAYS
 - ㉟ PROP. CONC. DRIVEWAY/DRIVEWAYS
 - ㊱ PROP. CONC. DRIVEWAY/DRIVEWAYS
 - ㊲ PROP. CONC. DRIVEWAY/DRIVEWAYS
 - ㊳ PROP. CONC. DRIVEWAY/DRIVEWAYS
 - ㊴ PROP. CONC. DRIVEWAY/DRIVEWAYS
 - ㊵ PROP. CONC. DRIVEWAY/DRIVEWAYS
 - ㊶ PROP. CONC. DRIVEWAY/DRIVEWAYS
 - ㊷ PROP. CONC. DRIVEWAY/DRIVEWAYS
 - ㊸ PROP. CONC. DRIVEWAY/DRIVEWAYS
 - ㊹ PROP. CONC. DRIVEWAY/DRIVEWAYS
 - ㊺ PROP. CONC. DRIVEWAY/DRIVEWAYS
 - ㊻ PROP. CONC. DRIVEWAY/DRIVEWAYS
 - ㊼ PROP. CONC. DRIVEWAY/DRIVEWAYS
 - ㊽ PROP. CONC. DRIVEWAY/DRIVEWAYS
 - ㊾ PROP. CONC. DRIVEWAY/DRIVEWAYS
 - ㊿ PROP. CONC. DRIVEWAY/DRIVEWAYS



ADDENDUM NO. 1

NO.	DESCRIPTION	DATE	BY	CHK.
1	REVISED JWB	2/26/17	JWB	JWB



Binkley & Barfield
CONSULTING ENGINEERS



AVENUE S STREET RECONSTRUCTION FROM 3508 ST. TO SEAWALL BLVD.
INTERSECTION & CURB RAMP LAYOUT
AT AVENUE S
35TH

PROJECT NO. 1900000000
DATE: DEC 08, 2021
SHEET NO. 141 OF 148